

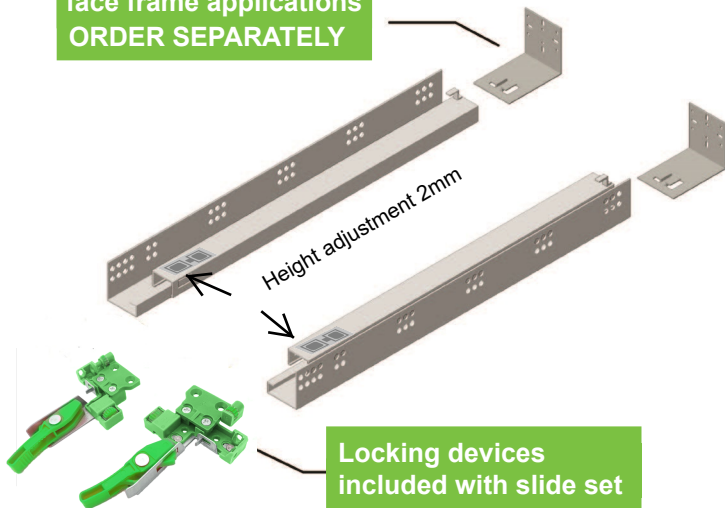
Thank you for choosing

**Excel** OneTouch

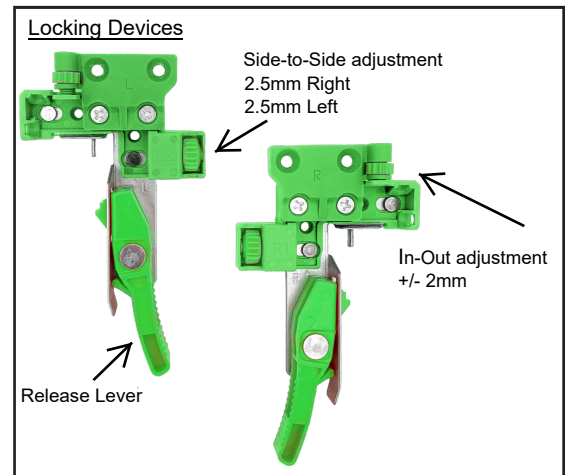
**Undermount drawer slides**



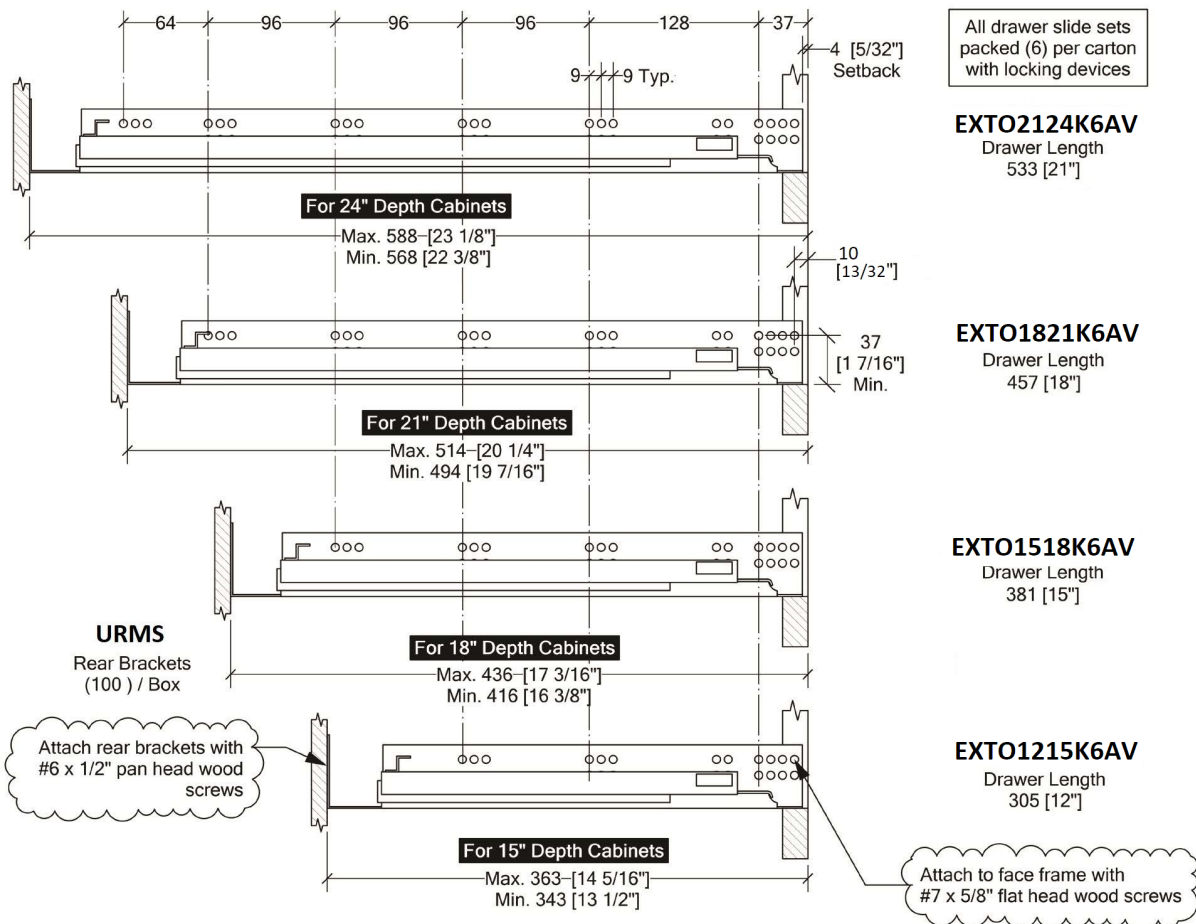
Rear brackets URMS for face frame applications  
**ORDER SEPARATELY**



- Full extension with **Push-to-Open**
- Locking devices with 4-way adjustment
- 95 lb. static load capacity
- Meets KCMA & BHMA standards



**Slide mounting specifications and set part numbers**

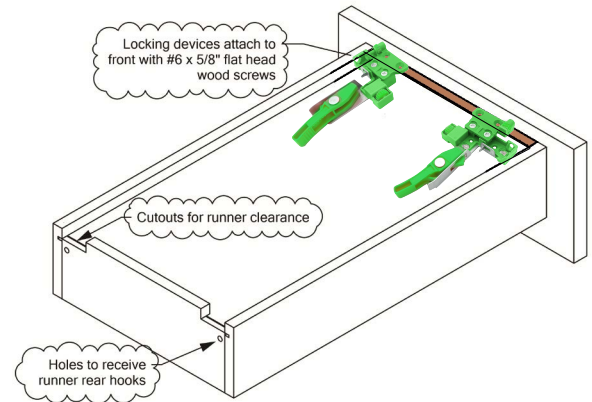
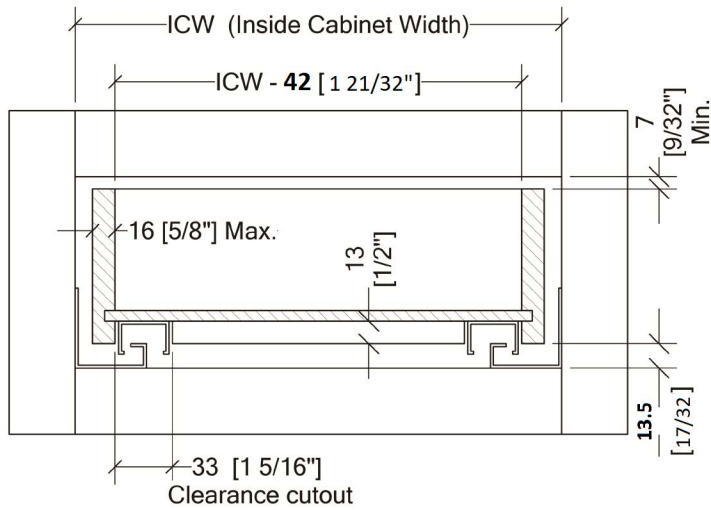


Dimensions in millimeters [ inch equivalent as noted ]

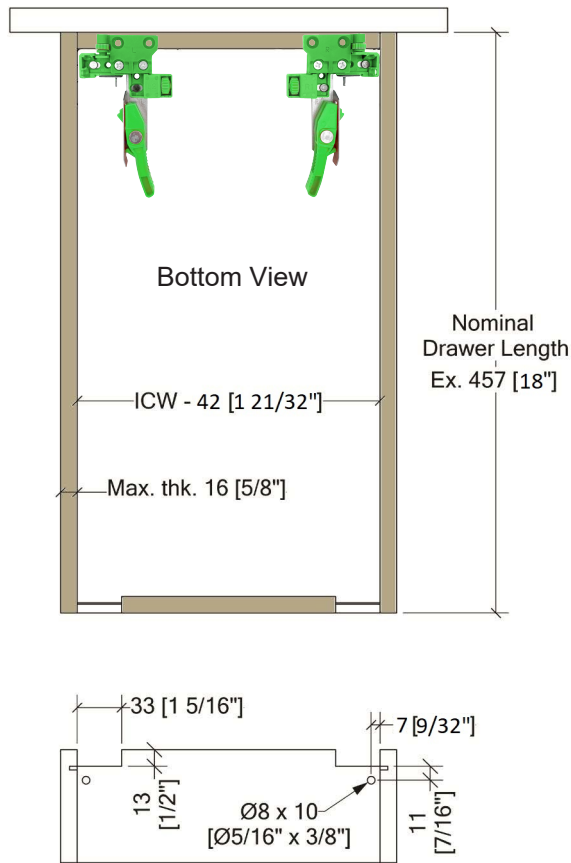
# Specifications for

**Excel**

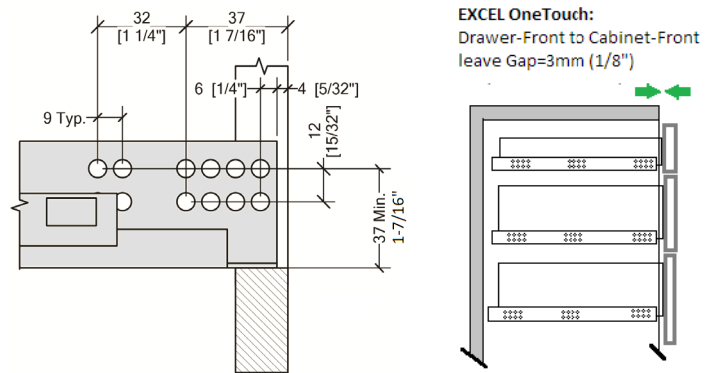
## Undermount drawer slides



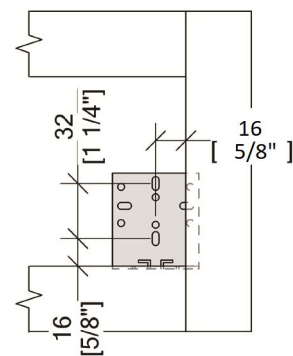
### Drawer size, cutouts and rear bore dimensions



### Profile installation



### Rear bracket installation



Dimensions in millimeters [ inch equivalent as noted ]

FGV-UDS-060219