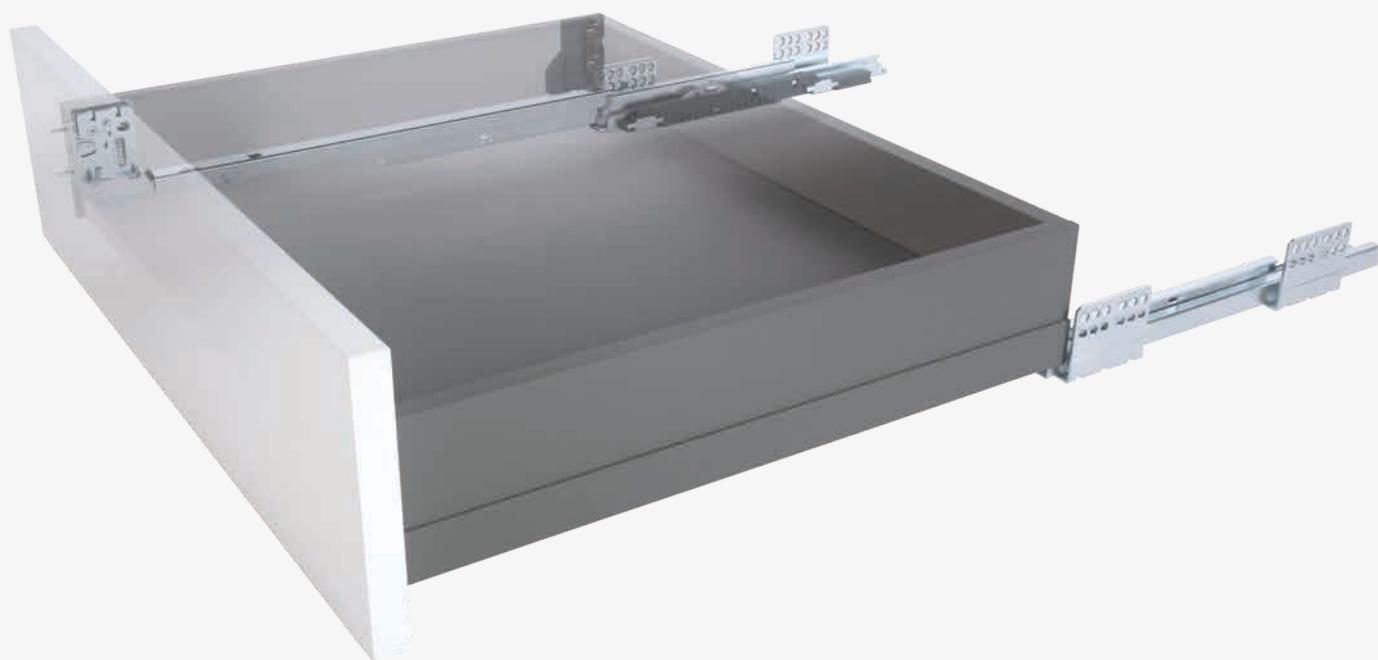


Ten²

A DRAWER
EVOLUTION



CONTAINING



FORMENTI & GIOVENZANA
PROVIDES FUNCTIONAL
SOLUTIONS FOR FURNITURE TO
MEET THE REAL NEEDS OF A
LARGE NUMBER OF CUSTOMERS.

All products are conceived and supplied with care and quality and are offered to the market at a competitive price. In this way, Formenti & Giovenzana contributes globally to increase the satisfaction of the customers buying furniture, giving access to pleasing features and improving the quality of life of the consumers.

Content

- 02 - INTRO
- 04 - REASONS TO CHOOSE TEN²
- 06 - TEN²
- 08 - TEN² DRAWER H90
- 10 - TEN² DRAWER H120
- 12 - TEN² DRAWER H180
- 14 - TEN² SLIDES
- 16 - TEN² ONETOUCH+SLOWMOTION TECHNOLOGY
- 18 - TEN² STEEL BACK PANELS
- 20 - TEN² BACK FIXINGS FOR WOODEN BACK PANEL
- 22 - TEN² RECTANGULAR RAILING SYSTEM
- 24 - TEN² IN INTERNAL DRAWER CRYSTAL FRONT
- 26 - TEN² IN INTERNAL DRAWER ALUMINIUM FRONT
- 28 - TEN² STABILIZER KIT
- 30 - TEN² ACQUARIO UNDERSINK SOLUTION
- 32 - TEN² KIT UNDERSINK
- 34 - TEN² STANDARD DRAWER KIT
- 36 - TEN² MACHINES & ACCESSORIES
- 38 - INSTRUCTIONS OF USE



TEN²

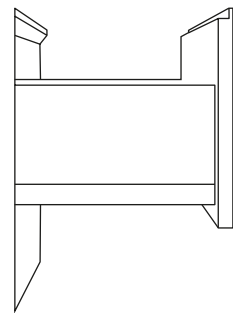
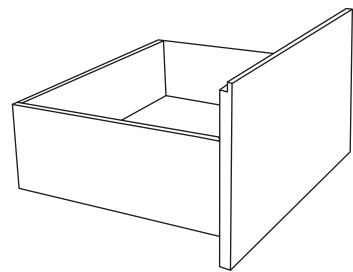
DOUBLE WALL METAL DRAWER
SLIM AND ELEGANT SHAPE
BRILLANT AND TRENDY COLOURS
MOTION AT ITS BEST
ONETOUCH+SLOWMOTION
TECHNOLOGY

Ten² is the high quality and high performance double wall drawer technology with slim and elegant shape. Ten² is a complete range covering all usual applications with clever solutions, Italian design and elegance. Ten² stands for fulfilment of the highest criteria where every detail counts. Ten² is a synonymous of state-of-the-art conception, use of environmental friendly materials and production solutions.

Reasons to choose Ten²

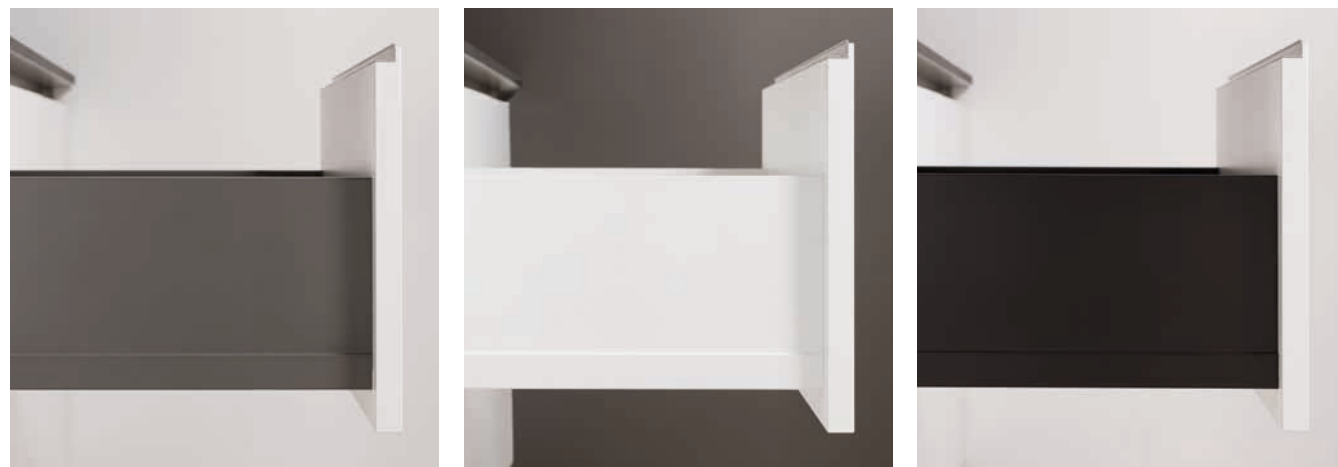
SLIM AND ELEGANT SHAPE

The Ten² drawer system is characterized by a slim shape and an enriched superior design. The lateral panels available in three different heights allow to create elegant drawer and pan drawer solutions maximizing storage space. The versatile application of the rectangular railing system offers excellent and additional lateral retention solutions.



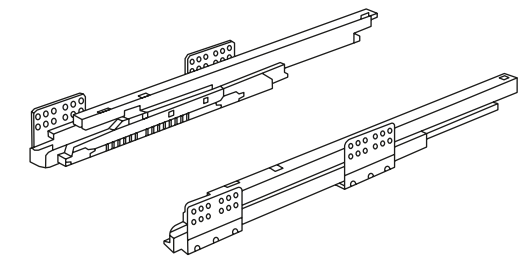
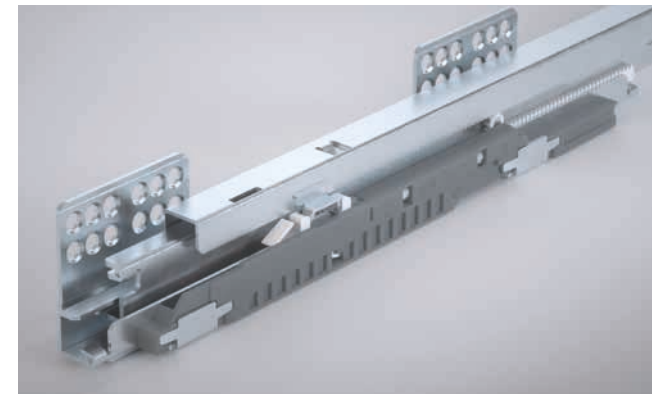
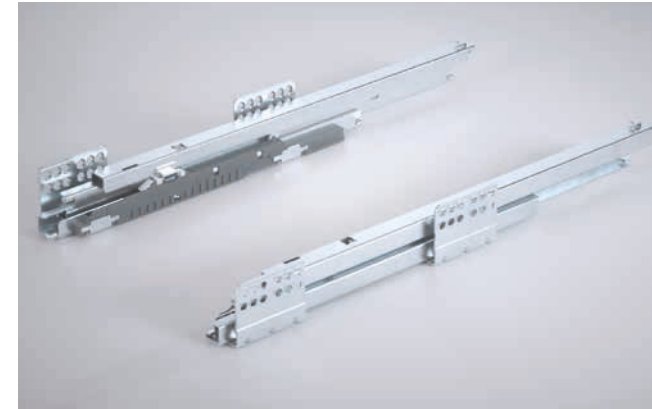
BRILLIANT AND TRENDY COLOURS

The Ten² drawer is available in a full range of colours; from standard White and Grey to innovative Storm Grey and Coffee Black to create drawers with modern look and matching perfectly with wood and current design trends. The final result is an elegant and high end furniture appeal.



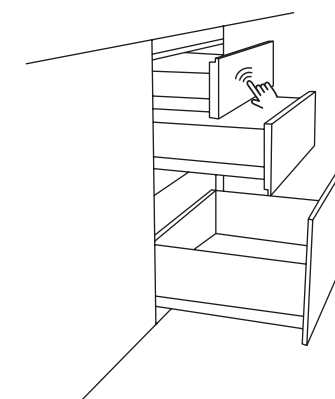
MOTION AT ITS BEST

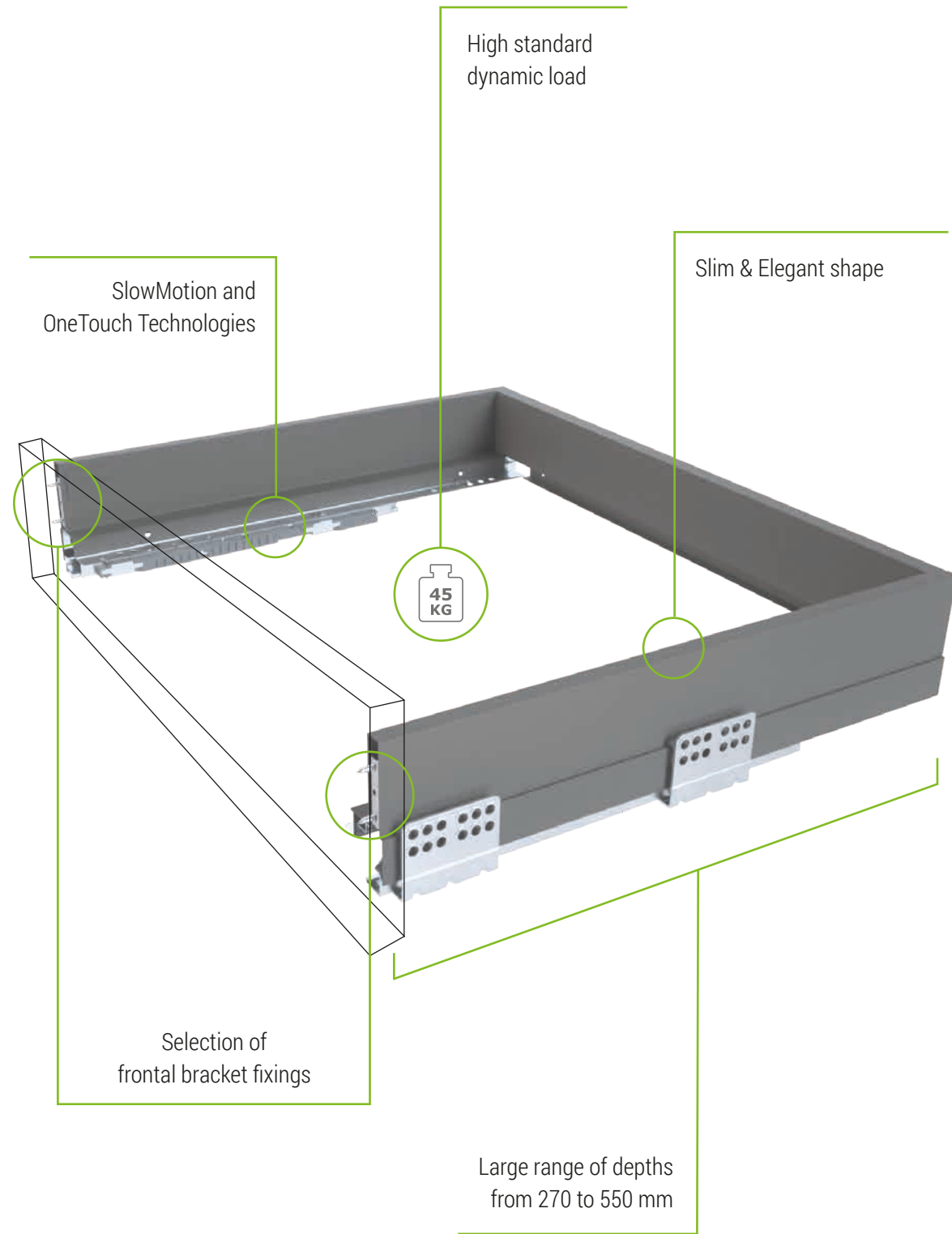
Further improvements on the Ten² slides guarantee better performance according to soft sliding movement and high stability. The full extension sliding system with a load capacity of 45kg throughout the range, is equipped with Dual-Synchro stabilisation for noiseless and a new powerful SlowMotion damper for perfect operation and long lasting function.



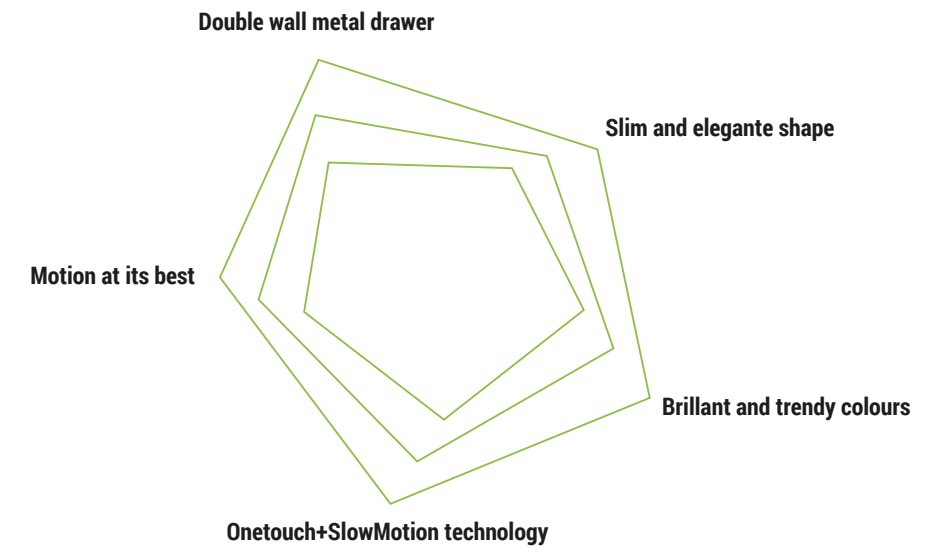
ONETOUCH+SLOWMOTION TECHNOLOGY

Never so easy to open and close a drawer with the new OneTouch+SlowMotion System. A completely hidden mechanism that ensures, with a gentle press on the front, a perfect and silent opening and soft closing. Depth adjustment on both sides guarantees precise front gap regulation. Easy to install, no cables or electricity required.





PERFORMANCE



A QUALITY RANGE

Ten² is the a high quality and high performance double wall drawer technology with extra slim shape. A complete product range covers all usual applications with clever solutions, Italian design and elegance.

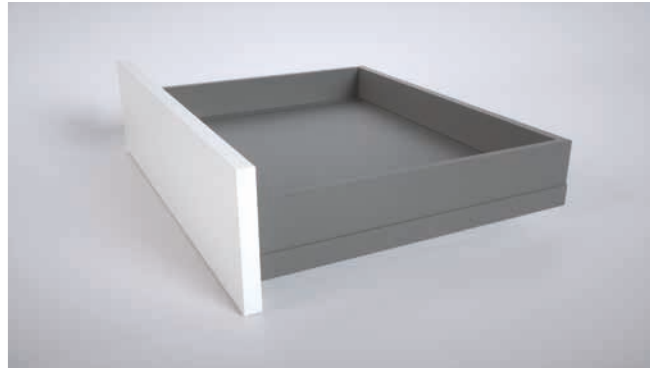


DETAILS THAT MAKE A DIFFERENCE

Ten² is a synonymous of state-of-the-art conception, use of environmental friendly materials and production solutions standing for a fulfilment of the highest criteria where every detail counts.



Ten² Drawer H90



Technical Specifications:

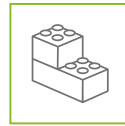
- Double wall steel drawer height 90 mm with slim shape
- Large range of depth from 275 to 550 mm
- 45kg of load capacity all over the range
- Bottom fixing via ClawFix or screws without processing on the panel
- Steel front fixing mechanism available with screws or dowels for strong and secure fixing
- Vertical and horizontal adjustment in the front fixing mechanism
- Decorative cover cap with possibility of customisation
- Metal epoxy finish in four colours: Coffee Black and Storm Grey for high end look and perfect match for wooden and modern finishes, standard Grey and Polar White for a linear and clean look
- Strong design features and state-of-the-art technology



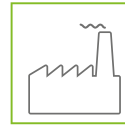
SLOWMOTION



ONETOUCH



EASY ASSEMBLY



PERFECT INDUSTRIALISATION

Code	Description	Packing
58.Y0A0.**.27.00000	Left and right drawer side 275	Industrial
58.Y0A0.**.30.00000	Left and right drawer side 300	Industrial
58.Y0A0.**.35.00000	Left and right drawer side 350	Industrial
58.Y0A0.**.40.00000	Left and right drawer side 400	Industrial
58.Y0A0.**.45.00000	Left and right drawer side 450	Industrial
58.Y0A0.**.50.00000	Left and right drawer side 500	Industrial
58.Y0A0.**.55.00000	Left and right drawer side 550	Industrial

** colour codes: N2 = Coffee Black / S8 = Storm Grey / A6 = standard Grey / F1 = Polar White.
Industrial packing composed by: 1 box with 10 right sides and 1 box with 10 left sides.

Code	Description	Packing
58.YM00.**.0000.000	Cover cap with FGV logo	1000 pcs
58.YM00.**.0000.00N	Cover cap without logo	1000 pcs

** plastic colour codes: N2 = Coffee Black / S8 = Storm Grey / A6 = standard Grey / F1 = Polar White.
It is possible to order embossed or silk-screen printing cover cap.

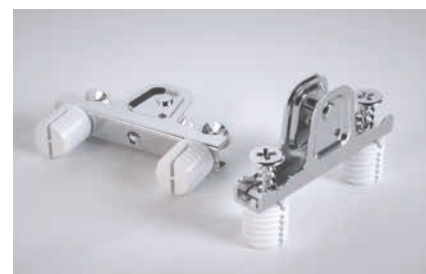
Code	Description	Packing
58.AY10.07.0000.000	Front brackets for self-tapping screws (n.1000 screws included)	500 pcs
58.AY20.07.0000.000	Front brackets with 10 mm knock-in dowels	500 pcs
58.AY30.07.0000.000	Front brackets with 10 mm expanding dowels	500 pcs
58.AY40.07.0000.000	Front brackets for self-tapping screws - Special pattern	500 pcs



Front brackets for self-tapping screws



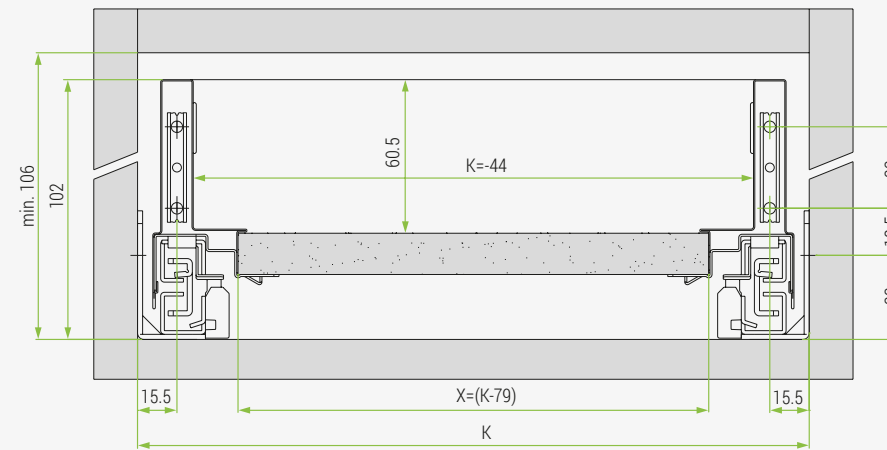
Front brackets with 10 mm knock-in dowels



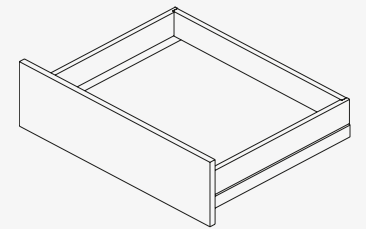
Front brackets with 10 mm expanding dowels

Ten² Drawer H90

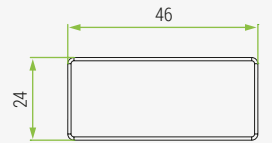
Front drilling & dimensions



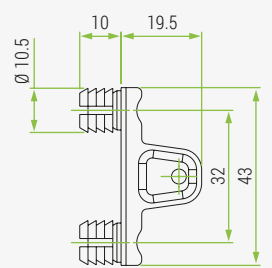
X	Bottom panel width
K	Internal cabinet width
Z	Bottom panel length



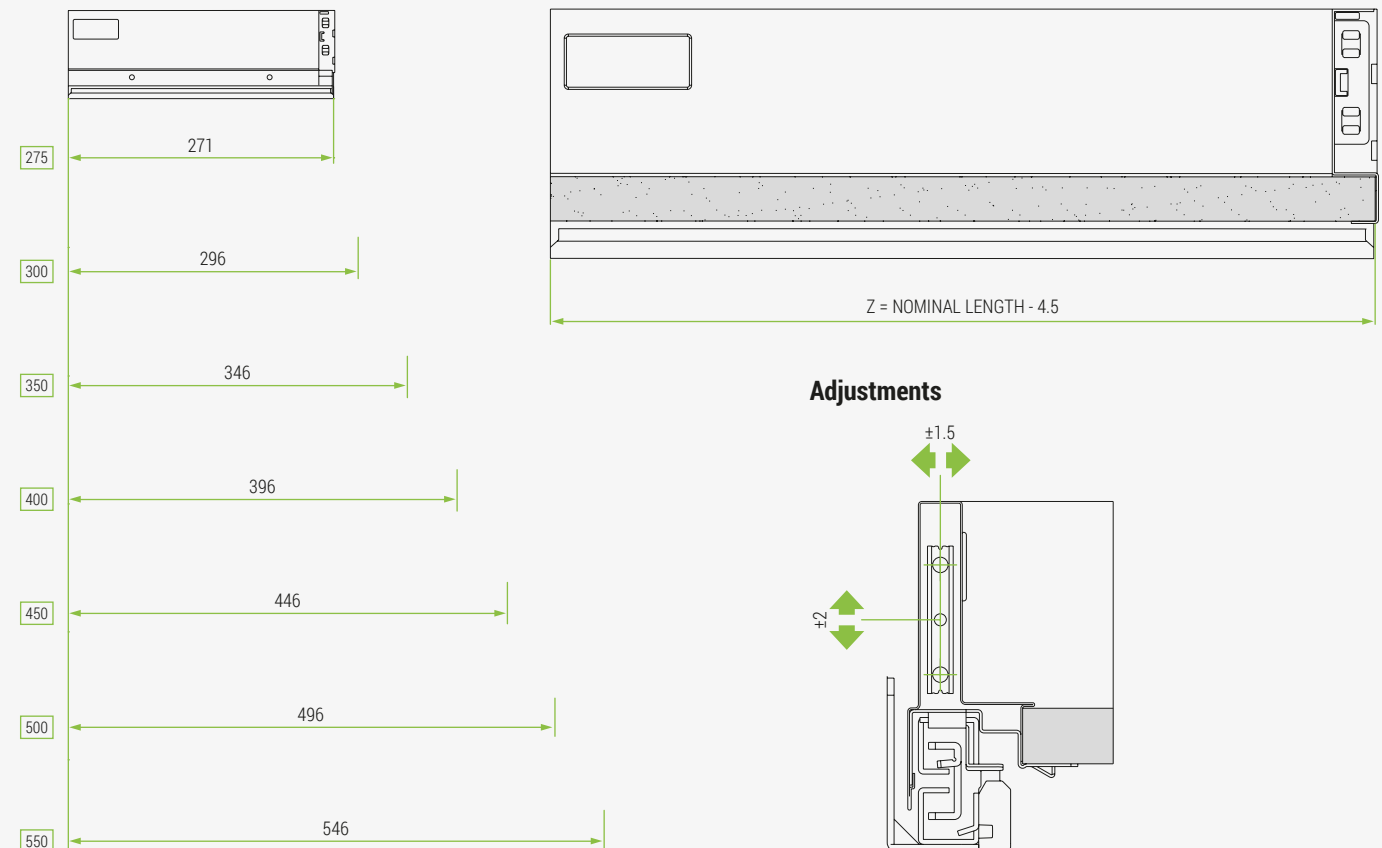
Cover cap



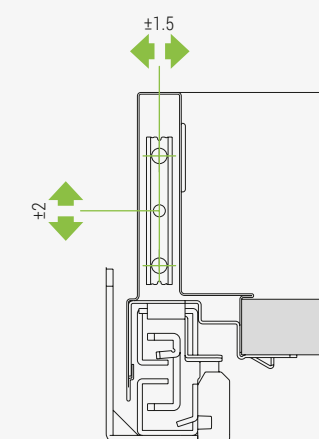
Front bracket with 10 mm dowels



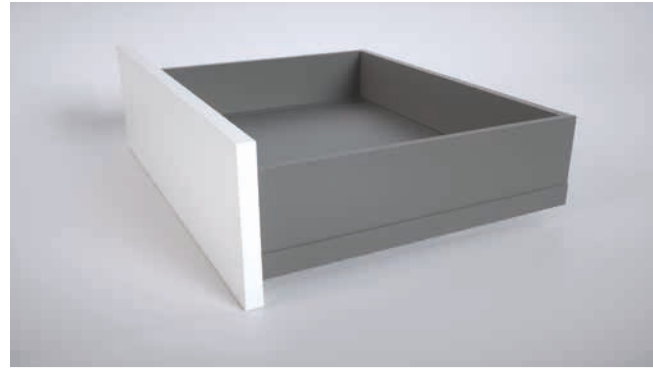
Drawer side dimensions



Adjustments



Ten² Drawer H120



Technical Specifications:

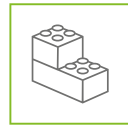
- Double wall steel drawer height 120 mm with slim shape
- Large range of depth from 275 to 550 mm
- 45kg of load capacity all over the range
- Bottom fixing via ClawFix or screws without processing on the panel
- Steel front fixing mechanism available with screws or dowels for strong and secure fixing
- Vertical and horizontal adjustment in the front fixing mechanism
- Decorative cover cap with possibility of customisation
- Metal epoxy finish in four colours: Coffee Black and Storm Grey for high end look and perfect match for wooden and modern finishes, standard Grey and Polar White for a linear and clean look
- Strong design features and state-of-the-art technology



SLOWMOTION



ONETOUCH



EASY ASSEMBLY



PERFECT INDUSTRIALISATION

Code	Description	Packing
58.Y0B0.**.27.00000	Left and right drawer side 275	Industrial
58.Y0B0.**.30.00000	Left and right drawer side 300	Industrial
58.Y0B0.**.35.00000	Left and right drawer side 350	Industrial
58.Y0B0.**.40.00000	Left and right drawer side 400	Industrial
58.Y0B0.**.45.00000	Left and right drawer side 450	Industrial
58.Y0B0.**.50.00000	Left and right drawer side 500	Industrial
58.Y0B0.**.55.00000	Left and right drawer side 550	Industrial

** colour codes: N2 = Coffee Black / S8 = Storm Grey / A6 = standard Grey / F1 = Polar White.
Industrial packing composed by: 1 box with 10 right sides and 1 box with 10 left sides.

Code	Description	Packing
58.YM00.**.0000.000	Cover cap with FGV logo	1000 pcs
58.YM00.**.0000.00N	Cover cap without logo	1000 pcs

** plastic colour codes: N2 = Coffee Black / S8 = Storm Grey / A6 = standard Grey / F1 = Polar White.
It is possible to order embossed or silk-screen printing cover cap.

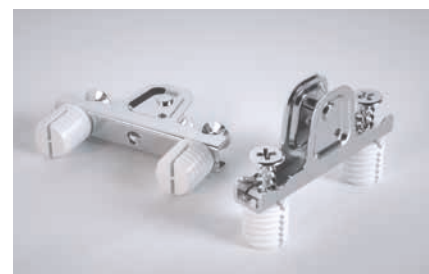
Code	Description	Packing
58.AY10.07.0000.000	Front brackets for self-tapping screws (n.1000 screws included)	500 pcs
58.AY20.07.0000.000	Front brackets with 10 mm knock-in dowels	500 pcs
58.AY30.07.0000.000	Front brackets with 10 mm expanding dowels	500 pcs
58.AY40.07.0000.000	Front brackets for self-tapping screws - Special pattern	500 pcs



Front brackets for self-tapping screws



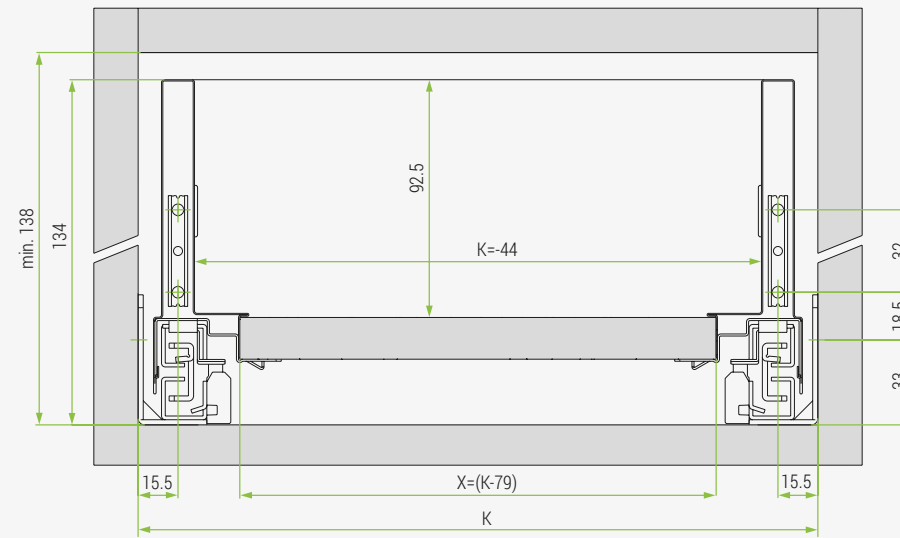
Front brackets with 10 mm knock-in dowels



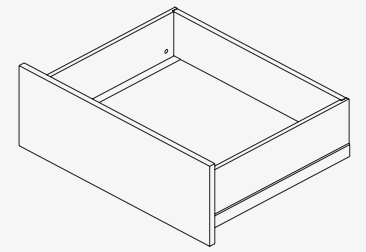
Front brackets with 10 mm expanding dowels

Ten² Drawer H120

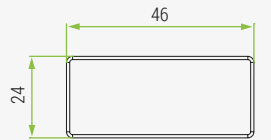
Front drilling & dimensions



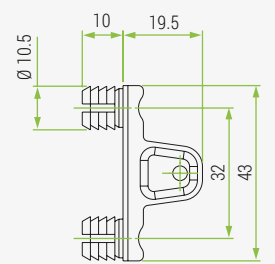
X	Bottom panel width
K	Internal cabinet width
Z	Bottom panel length



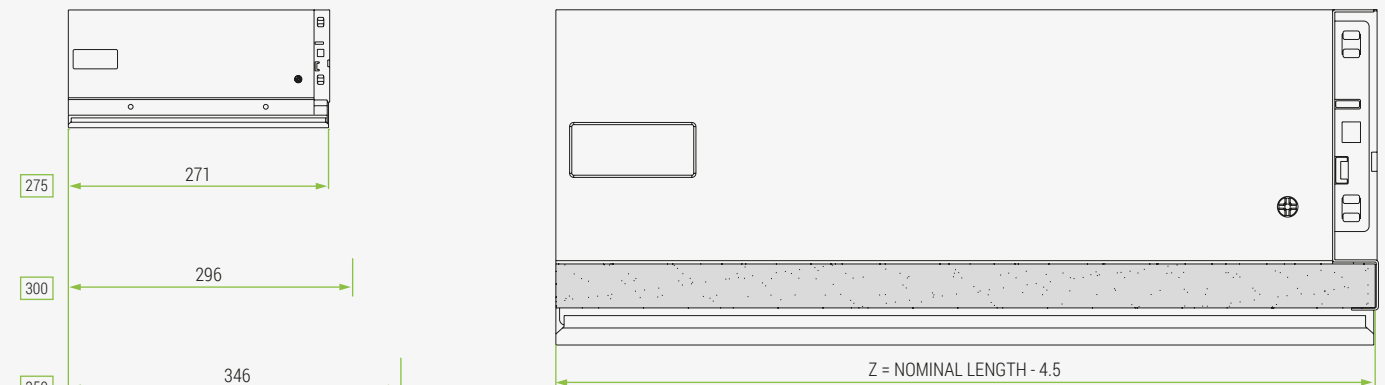
Cover cap



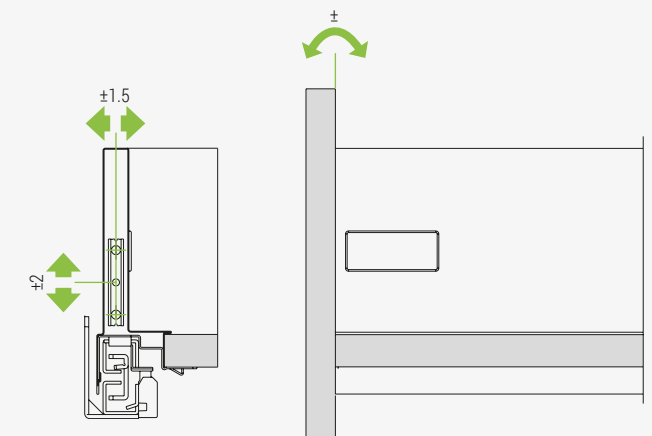
Front bracket with 10 mm dowels



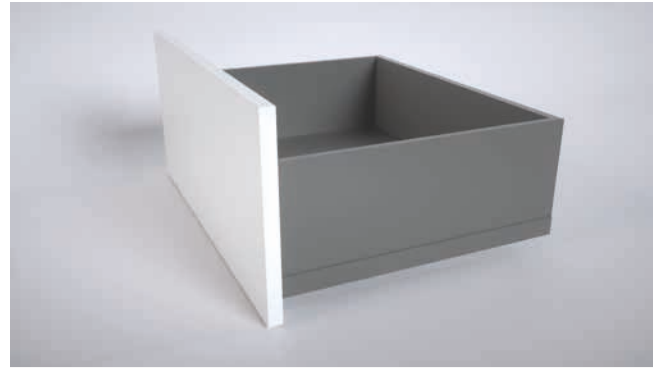
Drawer side dimensions



Adjustments



Ten² Drawer H180



Technical Specifications:

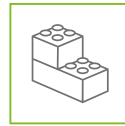
- Double wall steel drawer height 180 mm with slim shape
- Large range of depth from 275 to 550 mm
- 45kg of load capacity all over the range
- Bottom fixing via ClawFix or screws without processing on the panel
- Steel front fixing mechanism available with screws or dowels for strong and secure fixing
- Vertical and horizontal adjustment in the front fixing mechanism
- Decorative cover cap with possibility of customisation
- Metal epoxy finish in four colours: Coffee Black and Storm Grey for high end look and perfect match for wooden and modern finishes, standard Grey and Polar White for a linear and clean look
- Strong design features and state-of-the-art technology



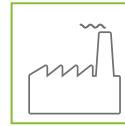
SLOWMOTION



ONETOUCH



EASY ASSEMBLY



PERFECT INDUSTRIALISATION

Code	Description	Packing
58.Y0S0.**.27.00000	Left and right drawer side 275	Industrial
58.Y0S0.**.30.00000	Left and right drawer side 300	Industrial
58.Y0S0.**.35.00000	Left and right drawer side 350	Industrial
58.Y0S0.**.40.00000	Left and right drawer side 400	Industrial
58.Y0S0.**.45.00000	Left and right drawer side 450	Industrial
58.Y0S0.**.50.00000	Left and right drawer side 500	Industrial
58.Y0S0.**.55.00000	Left and right drawer side 550	Industrial

** colour codes: N2 = Coffee Black / S8 = Storm Grey / A6 = standard Grey / F1 = Polar White.
Industrial packing composed by: 1 box with 10 right sides and 1 box with 10 left sides.

Code	Description	Packing
58.YM00.**.0000.000	Cover cap with FGV logo	1000 pcs
58.YM00.**.0000.00N	Cover cap without logo	1000 pcs

** plastic colour codes: N2 = Coffee Black / S8 = Storm Grey / A6 = standard Grey / F1 = Polar White.
It is possible to order embossed or silk-screen printing cover cap.

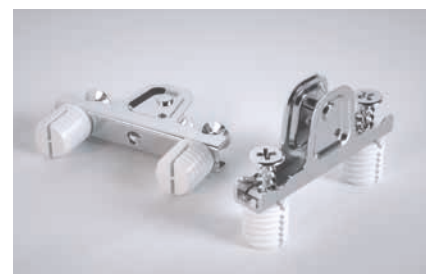
Code	Description	Packing
58.AY10.07.0000.000	Front brackets for self-tapping screws (n.1000 screws included)	500 pcs
58.AY20.07.0000.000	Front brackets with 10 mm knock-in dowels	500 pcs
58.AY30.07.0000.000	Front brackets with 10 mm expanding dowels	500 pcs
58.AY40.07.0000.000	Front brackets for self-tapping screws - Special pattern	500 pcs



Front brackets for self-tapping screws



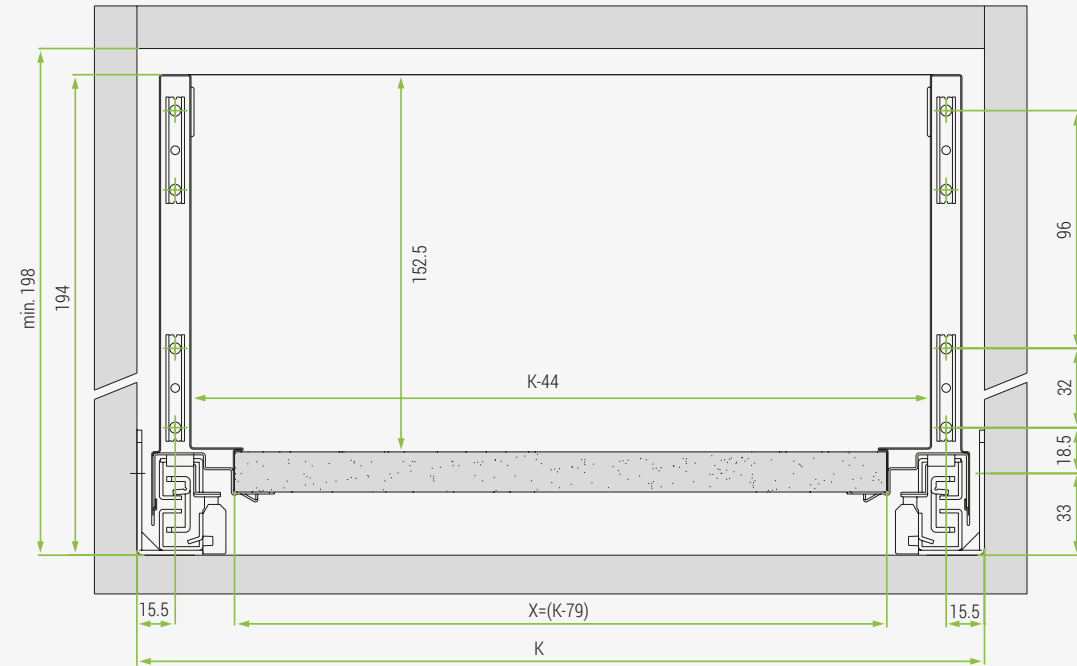
Front brackets with 10 mm knock-in dowels



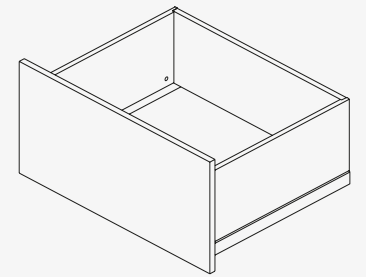
Front brackets with 10 mm expanding dowels

Ten² Drawer H180

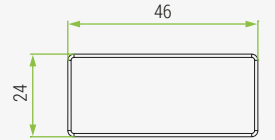
Front drilling & dimensions



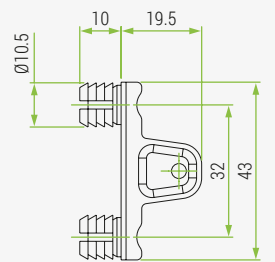
X	Bottom panel width
K	Internal cabinet width
Z	Bottom panel length



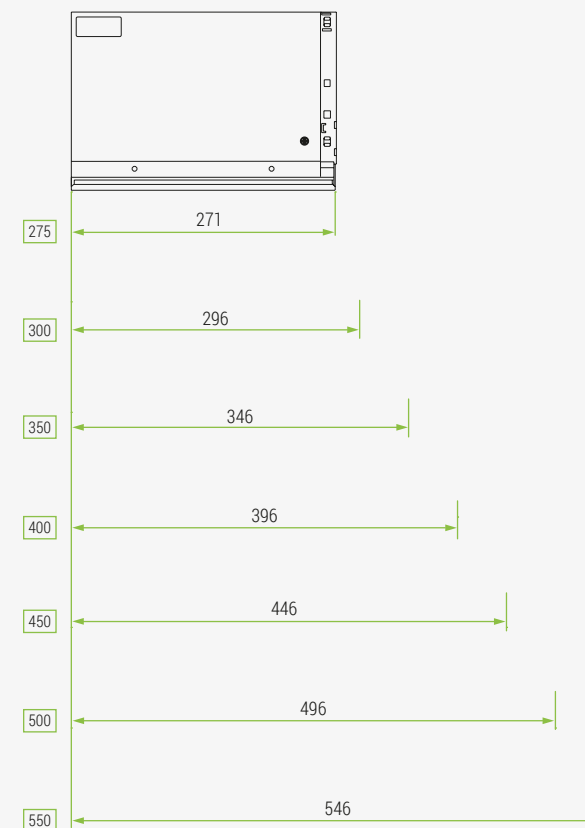
Cover cap



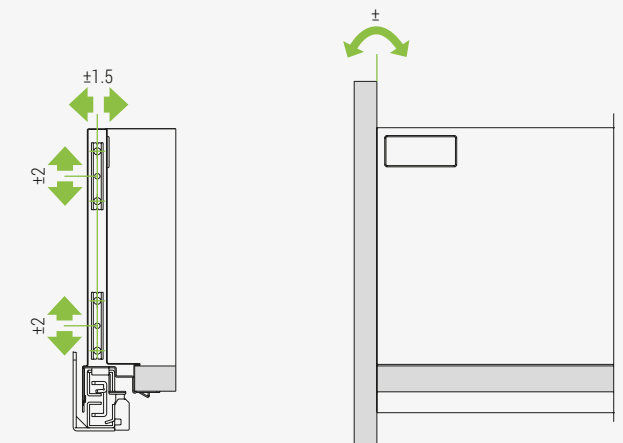
Front bracket with 10 mm dowels

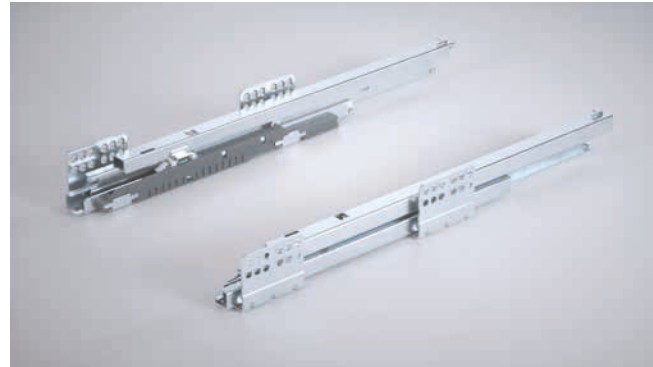
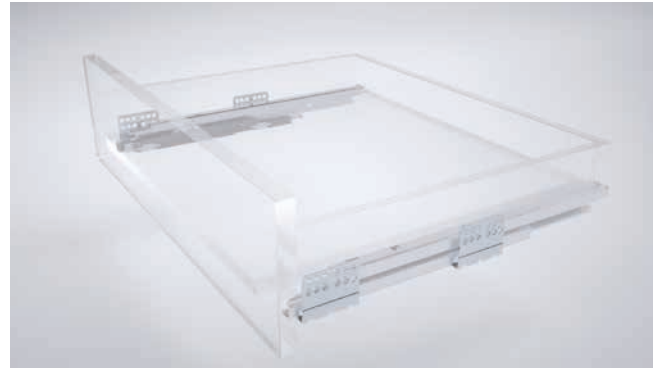


Drawer side dimensions



Adjustments





Technical Specifications:

- Full extension damped slides for high performance and smooth action
- Large range of length from 275 to 550 mm
- High 45kg standard load for ease of use throughout the applications
- High side stability thanks to Dual-Synchro® rack-and-pinion for smooth action
- Adaptive SlowMotion damping for silent and majestic closing under all load circumstances or adverse conditions
- Slide-click fixing of drawer on the slide for easy and safe connection
- Very smooth action and increased glide ability thanks to rollers with special design and materials
- Long lasting life thanks to high quality material and performance design

Code	Description	Packing
58.YEF0.A.270X0000	Left and right drawer slide 275	Industrial
58.YEF0.A.300X0000	Left and right drawer slide 300	Industrial
58.YEF0.A.350X0000	Left and right drawer slide 350	Industrial
58.YEF0.A.400X0000	Left and right drawer slide 400	Industrial
58.YEF0.A.450X0000	Left and right drawer slide 450	Industrial
58.YEF0.A.500X0000	Left and right drawer slide 500	Industrial
58.YEF0.A.550X0000	Left and right drawer slide 550	Industrial

Industrial packing composed by: 1 box with 10 right slides and 1 box with 10 left slides.

SLOWMOTION

ONETOUCH

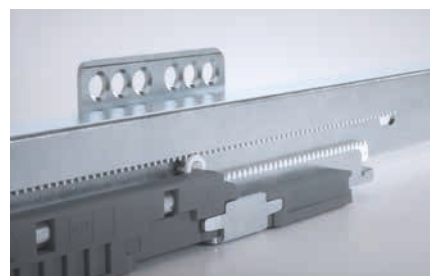
EASY ASSEMBLY

PERFECT INDUSTRIALISATION

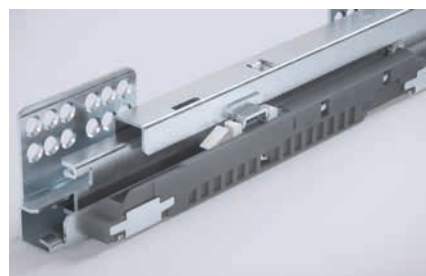
100%
ESTRAZIONE TOTALE

45 KG
CARICO DINAMICO

DUAL-SYNCHRO



Dual-Synchro for high side stability

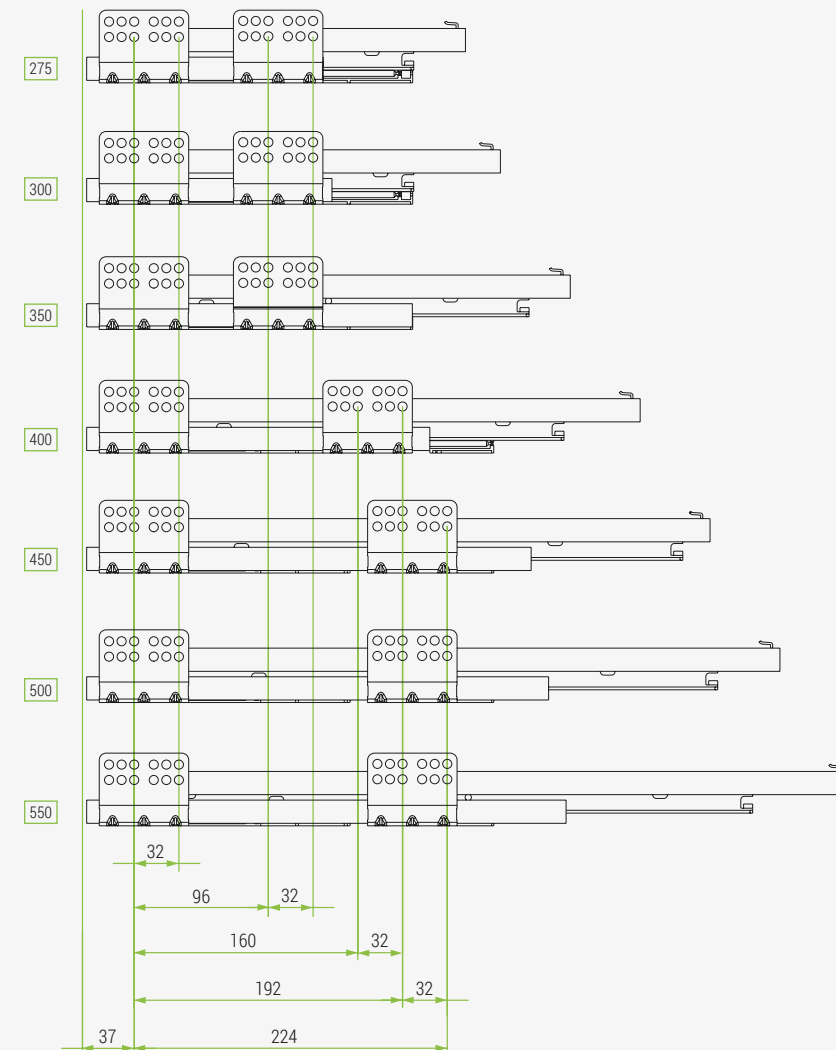
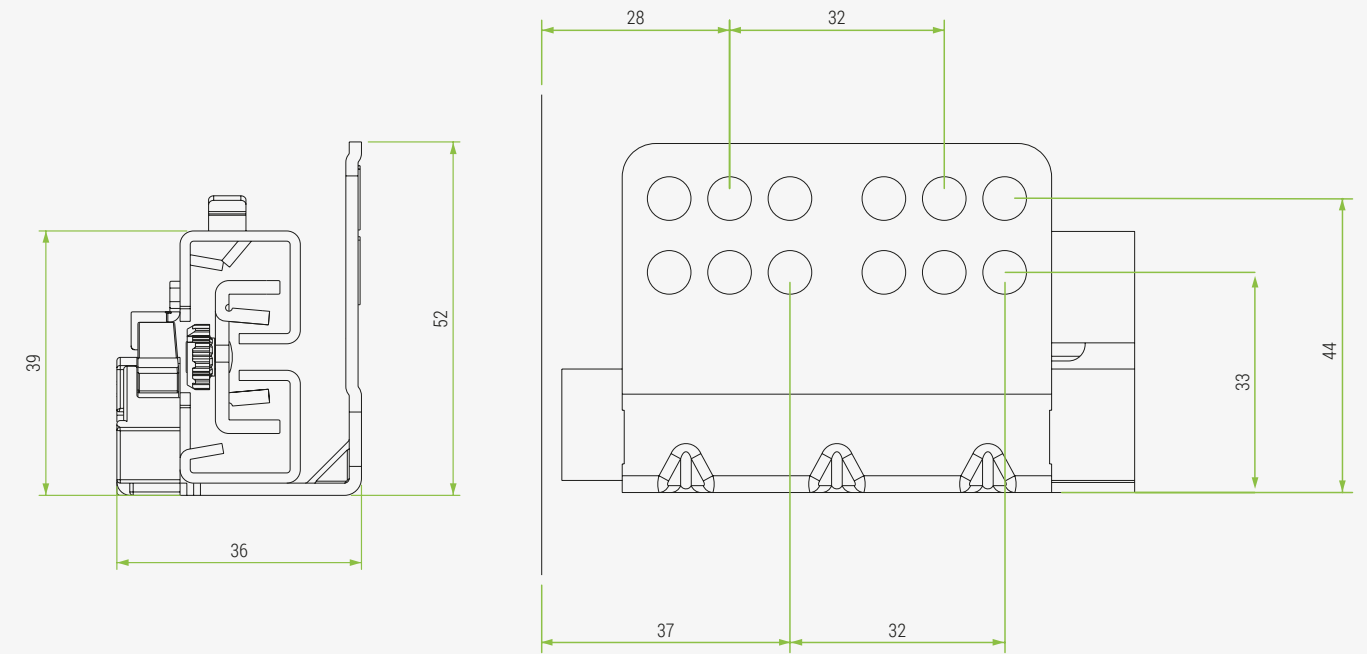


SlowMotion adaptive damping



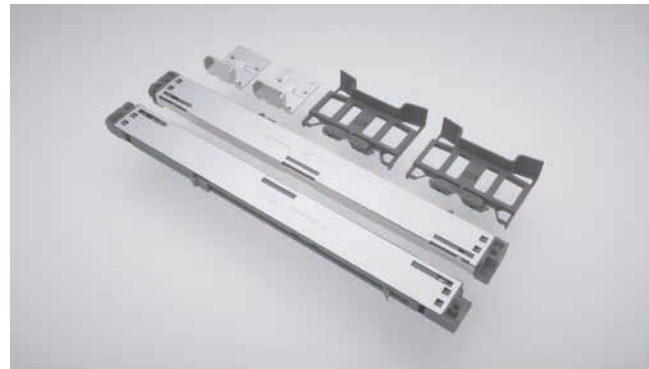
Tool-less slide-fixing of drawer on slide

Slides dimensions & drilling position



Nominal length	Slide length
275	275
300	299
350	349
400	399
450	449
500	499
550	549

Cabinet depth = slide length + 3 mm



Technical Specifications:

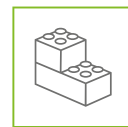
- Add-on device for hand-less furniture with integrated SlowMotion technology
- Efficient and easy to install on standard Ten² drawer
- Mechanical solution: no wires or electrical connection required
- Minimum and adjustable gap between the door and the cabinet
- It works normally even if the drawer is pulled outwards
- It can be retrofitted anytime
- Invisible installation under the drawer
- Just a light touch and the drawer opens by itself
- Smooth and silent closure without any effort



SLOWMOTION



ONETOUCH



EASY ASSEMBLY

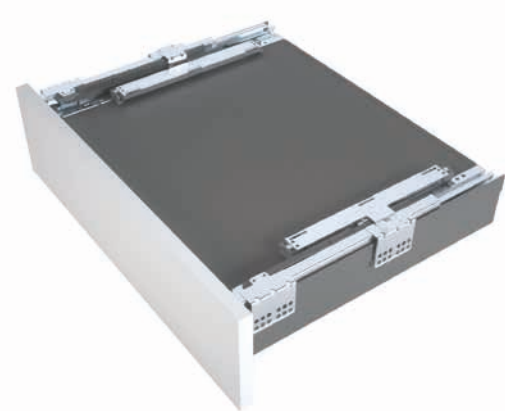


PERFECT INDUSTRIALISATION

Code	Description	Packing
------	-------------	---------

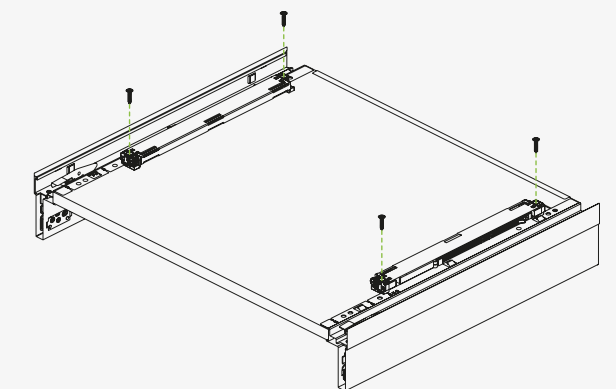
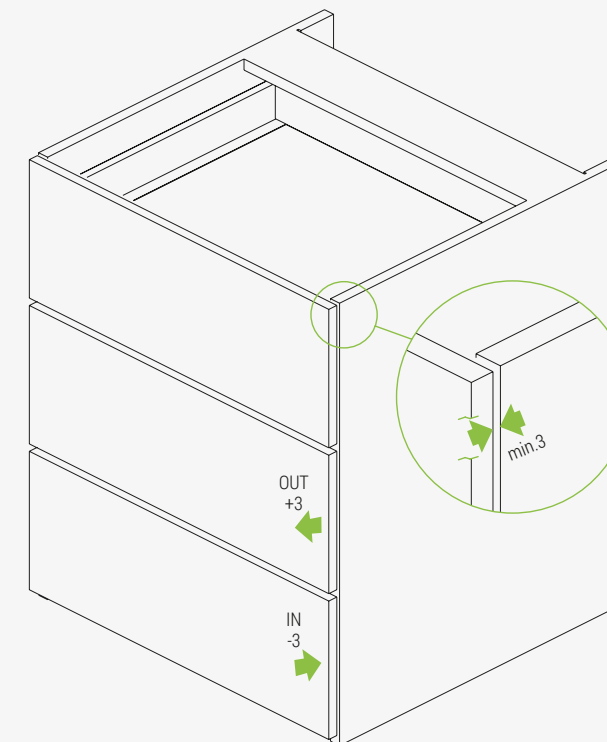
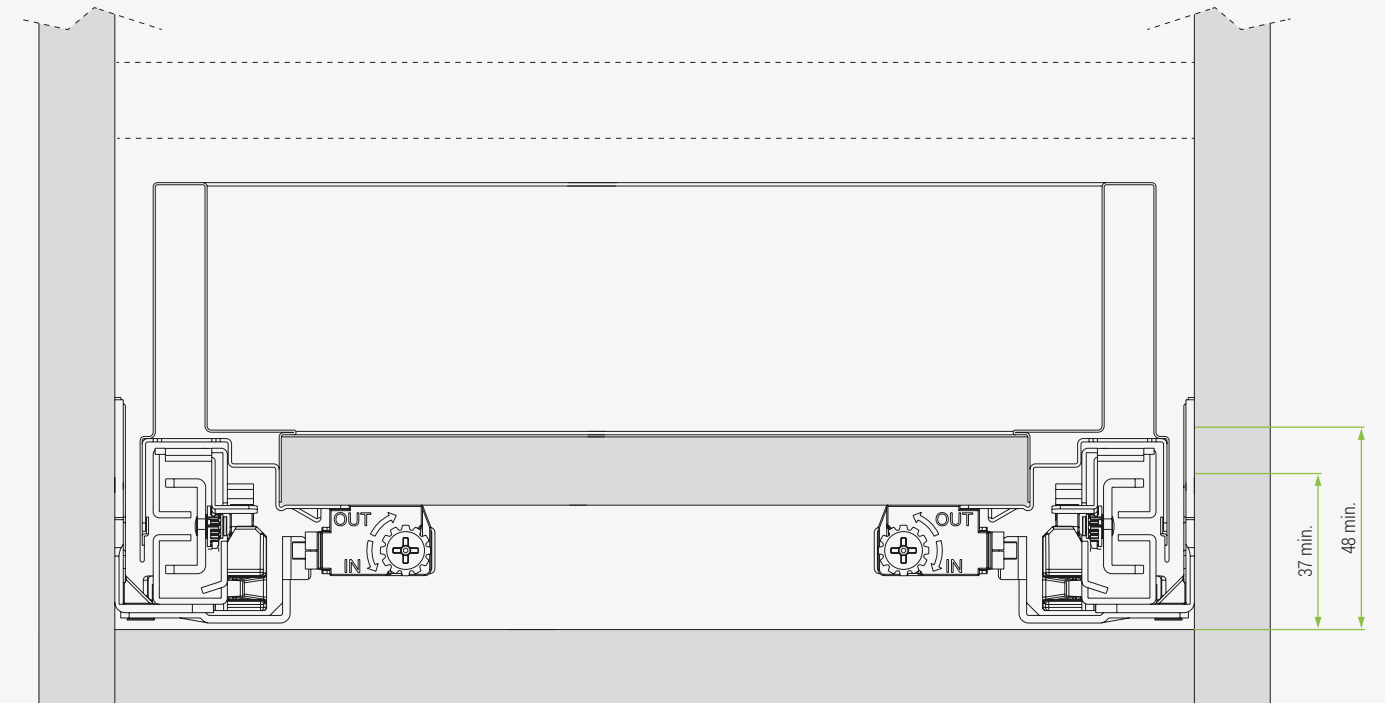
58.YM02.06.0000000	Kit OneTouch+SlowMotion technology	10 kits
--------------------	------------------------------------	---------

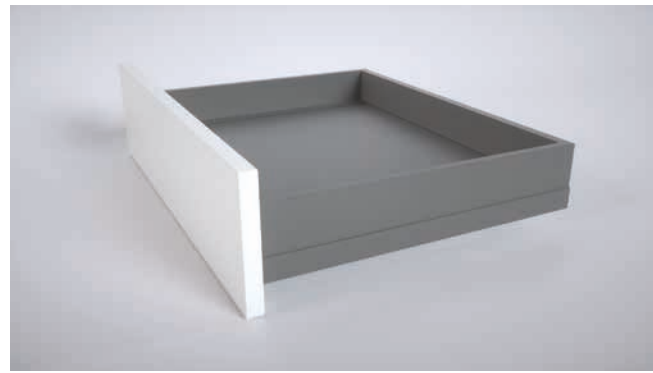
Kit consisting of: 2 OneTouch+SlowMotion devices, 2 drilling jig, 2 brackets, fixing screws.
Available for drawer depths from 350 to 550 mm



View of the OneTouch+SlowMotion device assembled under the drawer

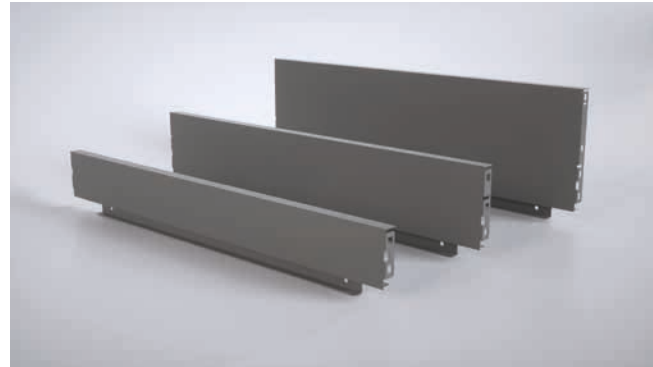
OneTouch+SlowMotion technology application





Technical Specifications:

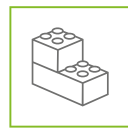
- Steel back panel for consistent look and strong construction
- Three heights: 90, 120 and 180 mm
- Ten² widths from 300 to 1200 mm
- Custom width upon request
- Available for 16 and 18 mm cabinet side panel thickness
- Thick material for strong construction and stability
- Metal epoxy finish in four colours matching perfectly the drawer finish: Coffee Black, Storm Grey, standard Grey and Polar White



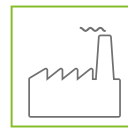
SLOWMOTION



ONETOUCH



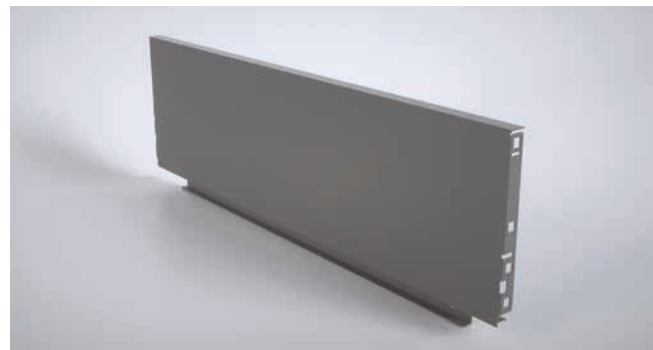
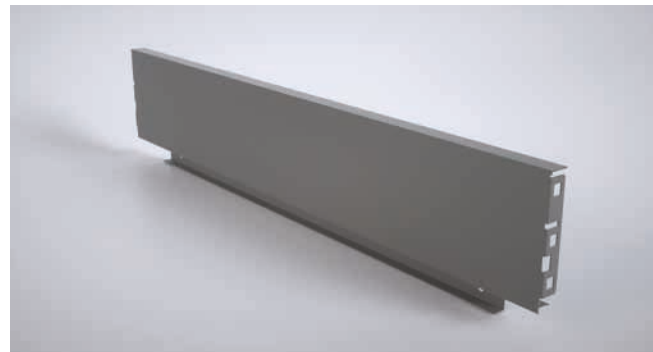
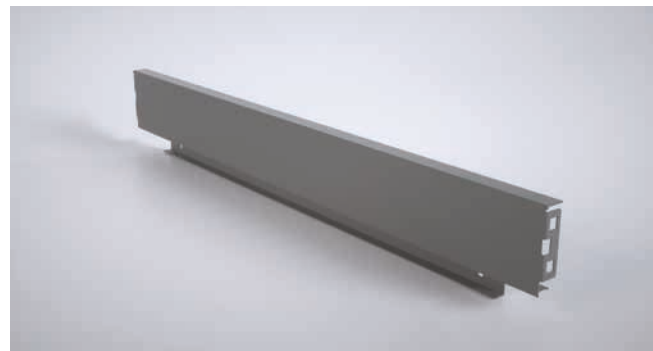
EASY ASSEMBLY



PERFECT INDUSTRIALISATION

Code	Description	Packing
58.PYPA.**.^^.-.000	Steel back panel H90	20 pcs
58.PYPB.**.^^.-.000	Steel back panel H120	10 pcs
58.PYPS.**.^^.-.000	Steel back panel H180	10 pcs

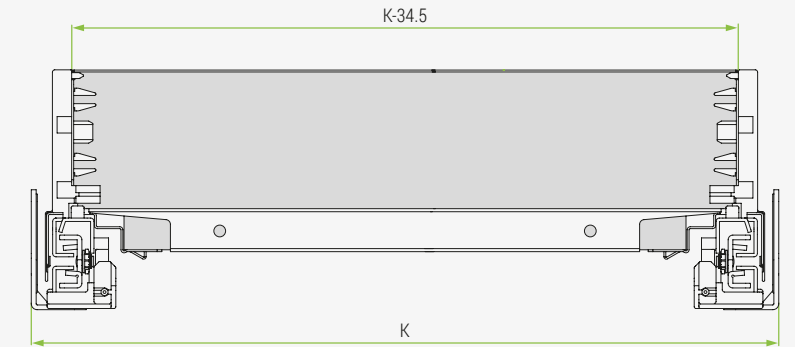
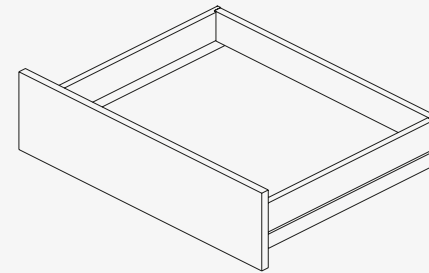
** colour codes: N2 = Coffee Black / S8 = Storm Grey / A6 = standard Grey / F1 = Polar White.
 ^^ back panel width: 30/35/40/45/50/60/80/90/10/12 (example 45 stands for 450 mm cabinet width).
 -- cabinet side panel thickness: 16/18 (mm)



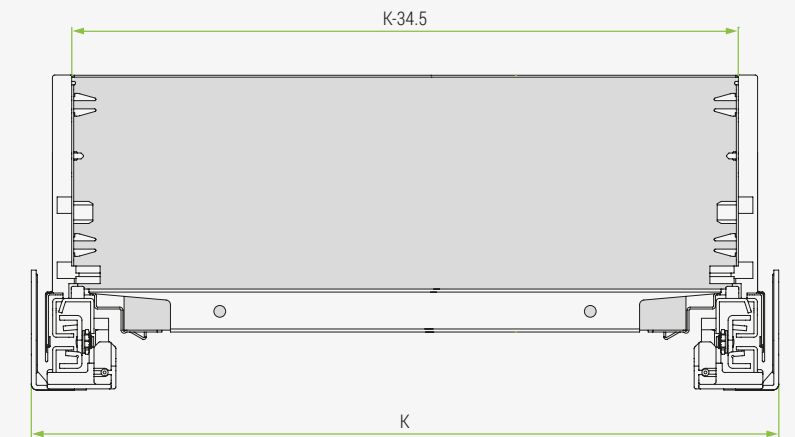
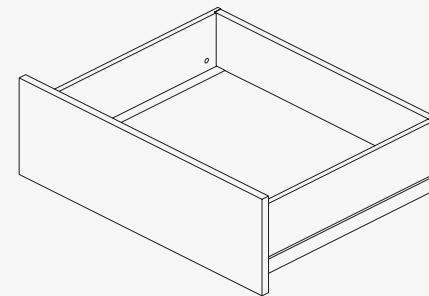
Three steel back panel heights

Steel back panel

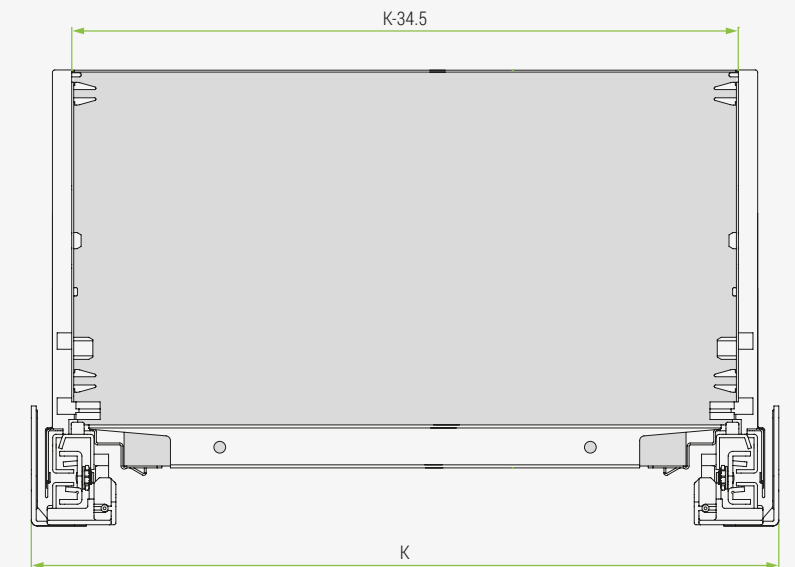
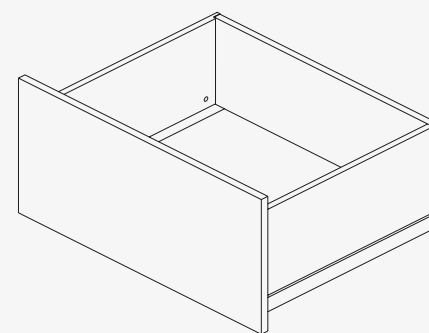
Drawer H90



Drawer H120

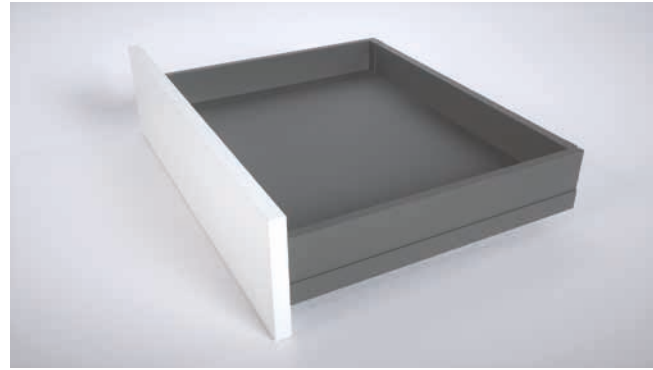


Drawer H180



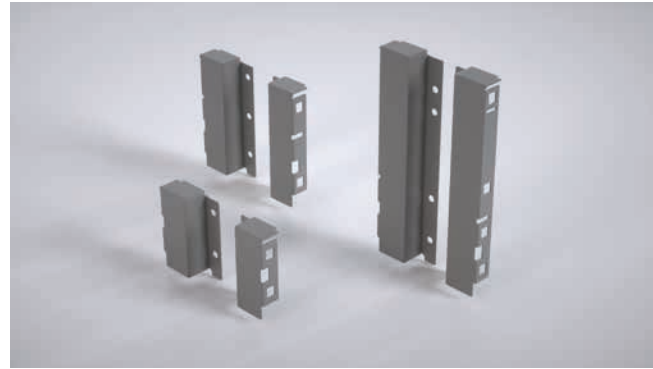
K Internal cabinet width

Ten² Back fixings for wooden back panel



Technical Specifications:

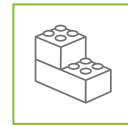
- Steel back fixings for versatility in dimensions and design
- Three heights: 90, 120 and 180 mm
- Suitable also for use with extra-high wooden backs
- Easy assembling of the wooden back panel
- Metal epoxy finish in four colours matching perfectly the drawer finish: Coffee Black, Storm Grey, standard Grey and Polar White



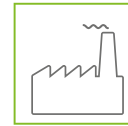
SLOWMOTION



ONETOUCH



EASY ASSEMBLY



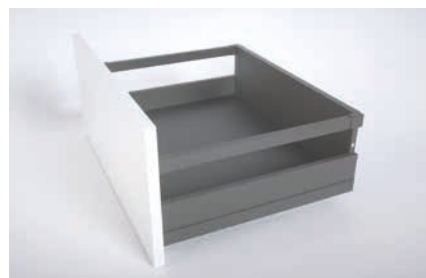
PERFECT INDUSTRIALISATION

Code	Description	Packing
58.AYPA.**.0000.000	Set of steel back fixings H90	50 sets
58.AYPB.**.0000.000	Set of steel back fixings H120	50 sets
58.AYPS.**.0000.000	Set of steel back fixings H180	50 sets

** colour codes: N2 = Coffee Black / S8 = Storm Grey / A6 = standard Grey / F1 = Polar White.



Back fixing H90



Back fixing H180 with railing

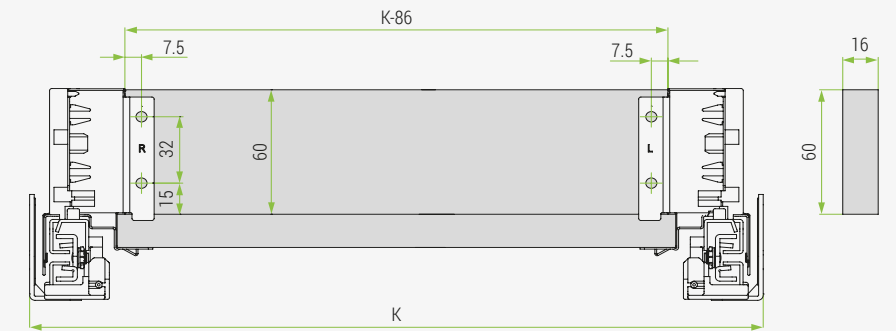
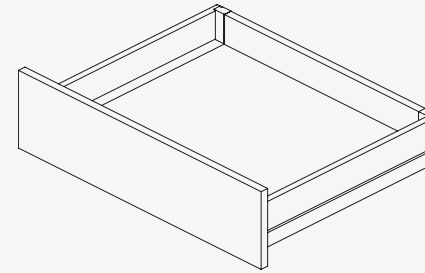


Back fixing H180

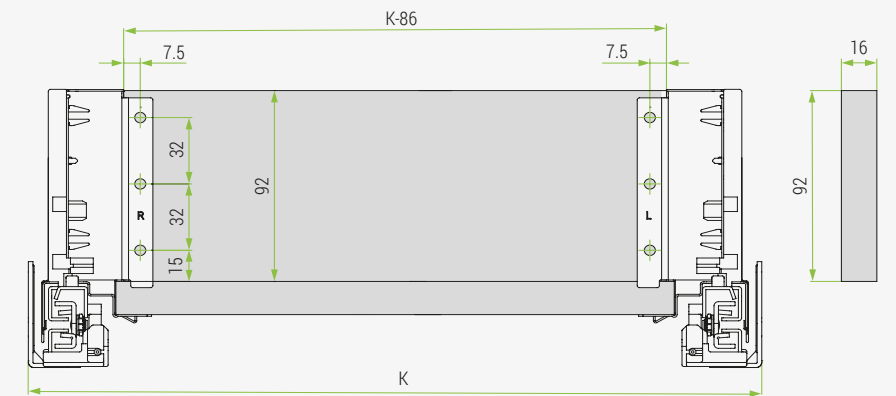
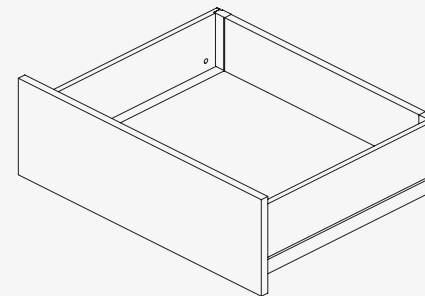
Ten² Back fixings for wooden back panel

Wooden back panel - Back view

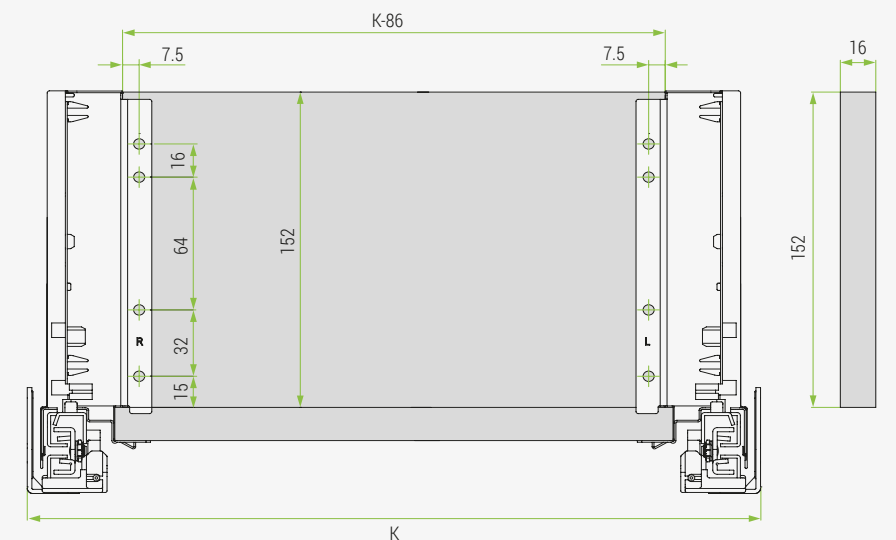
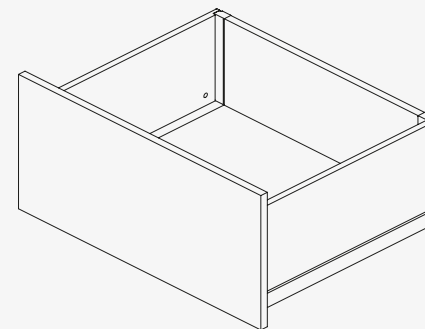
Drawer H90



Drawer H120

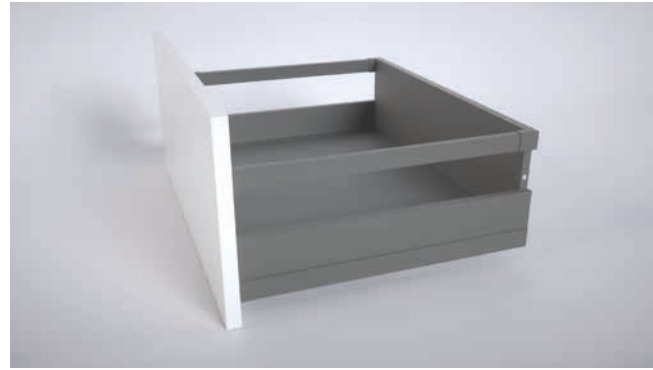


Drawer H180



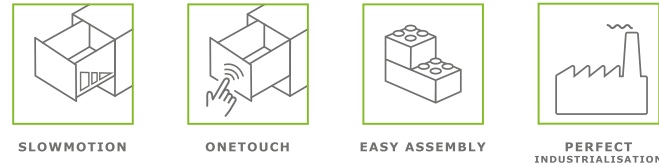
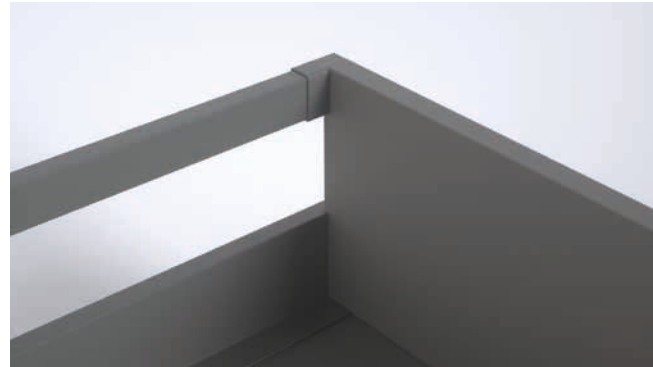
K Internal cabinet width

Ten² Rectangular railing system



Technical Specifications:

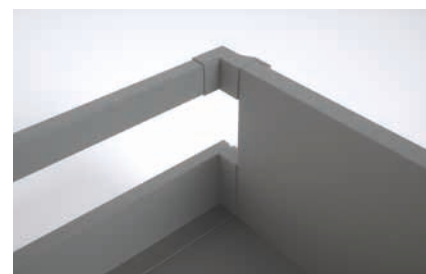
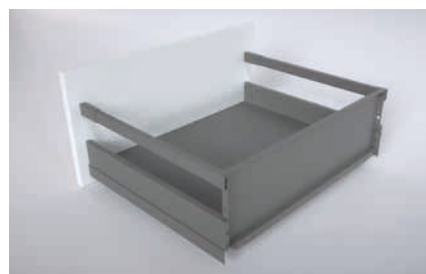
- Steel railing bars for perfect volume management and strong construction
- Seven dimensions adapted to each drawer depth
- Simple click-on bracket for safe back fixing on steel panel
- Available plastic brackets for railing free fixing positioning at any height to the wooden back panel
- Integrated inclination adjustment for +/- 3.5 mm
- Metal epoxy finish in four colours matching perfectly the drawer finish: Coffee Black, Storm Grey, standard Grey and Polar White
- Colour and finish of plastic components enhances quality feel
- Excellent side retention in high drawer applications



Code	Description	Packing
58.RYD3.**.**.00L00	Left steel rectangular railing screw-on	40 pcs
58.RYD3.**.**.00R00	Right steel rectangular railing screw-on	40 pcs
** colour codes: N2 = Coffee Black / S8 = Storm Grey / A6 = standard Grey / F1 = Polar White. ** railing tube dimensions: 27/30/35/40/45/50/55 (example 30 stands for 300 mm railing length/drawer depth).		

Code	Description	Packing
58.AYPW.**.000000	Set of brackets for rectangular railing fixing to the high wooden back	50 sets
**plastic colour codes: N2 = Coffee Black / S8 = Storm Grey / A6 = standard Grey / F1 = Polar White.		

To be combined with the high back wooden panel



Screw-on railing

Pan drawer application with railing

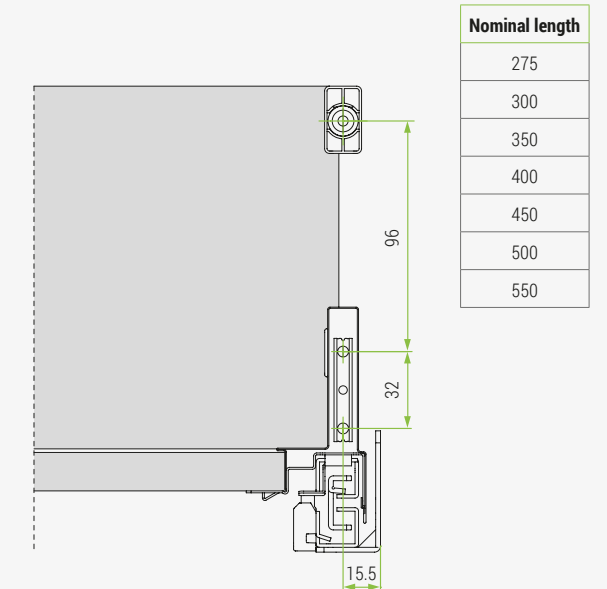
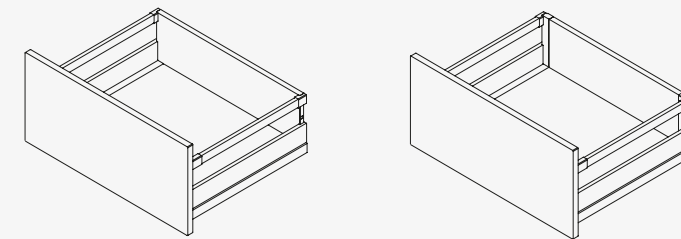
Railing brackets application

Ten² Rectangular railing system

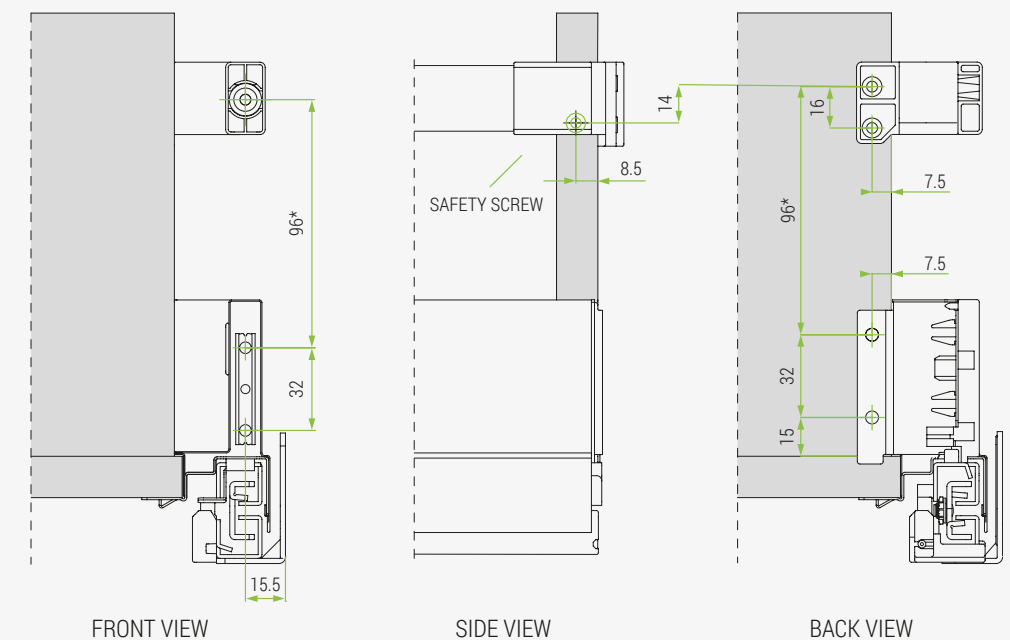
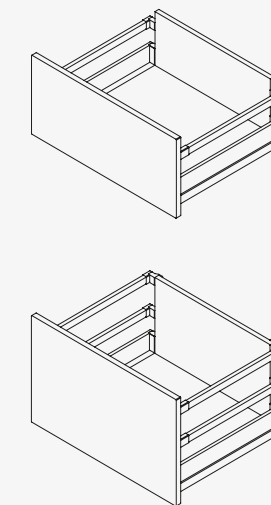
Screw-on railing



Railing application with steel back panel and steel back brackets

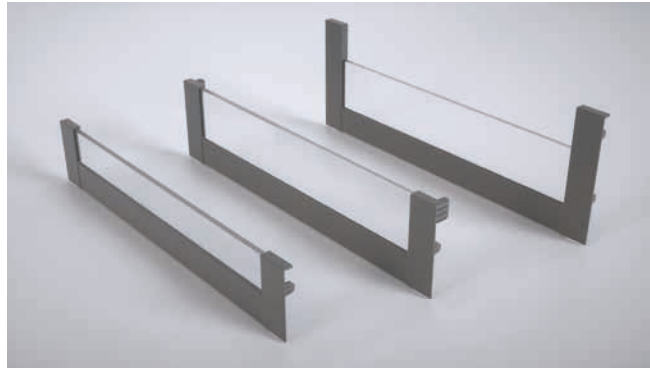
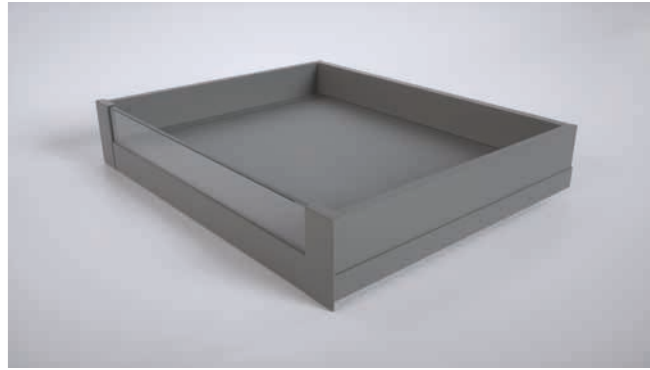


Railing brackets application with wooden back panel



*RECOMMENDED POSITION

Ten² IN internal drawer - crystal front



Technical Specifications:

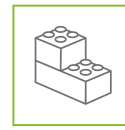
- Kit for 4-sided internal drawer for elegant and practical function
- Plastic frontal brackets with improved fixing system to ensure a stronger coupling and a perfect match with lateral panels
- Brackets available in 3 heights: 90, 120 and 180 mm
- Crystal front system consisting of crystal profile to be cut on size of the drawer width and to be used with lower aluminium profile and frontal bracket adapters
- No need for edge banding on the front of the drawer bottom
- Standard clip-on function for ease of assembly
- Four standard metal finishes matching perfectly the drawer finish: Coffee Black, Storm Grey, standard Grey and Polar White
- High-end look thanks to elegant materials and perfect finishing



SLOWMOTION



ONETOUCH



EASY ASSEMBLY



PERFECT INDUSTRIALISATION

IN drawer H90

Code	Description	Packing
58.AY4A.**.V000.000	Set of plastic frontal brackets for internal drawer H90	50 sets
58.PY4A.0C.1093.000	Crystal front profile - 1093 mm to be cut on size	5 pcs
Clear crystal front profile, 8 mm thickness.		
58.PY4V.**.1082.000	Aluminium lower frontal profile - 1082 mm to be cut on size for crystal profile	10 pcs

** colour codes: N2 = Coffee Black / S8 = Storm Grey / A6 = standard Grey / F1 = Polar White.

IN drawer H120

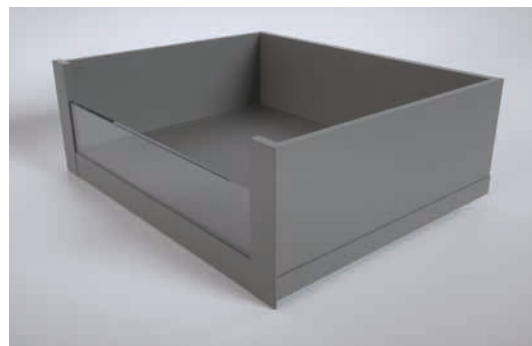
Code	Description	Packing
58.AY4B.**.V000.000	Set of plastic frontal brackets for internal drawer H120	50 sets
58.PY40.0C.1093.000	Crystal front profile - 1093 mm to be cut on size	5 pcs
Clear crystal front profile, 8 mm thickness.		
58.PY4V.**.1082.000	Aluminium lower frontal profile - 1082 mm to be cut on size for crystal profile	10 pcs

** colour codes: N2 = Coffee Black / S8 = Storm Grey / A6 = standard Grey / F1 = Polar White

IN drawer H180

Code	Description	Packing
58.AY4S.**.V000.000	Set of plastic frontal brackets for internal drawer H180	50 sets
58.PY40.0C.1093.000	Crystal front profile - 1093 mm to be cut on size	5 pcs
Clear crystal front profile, 8 mm thickness.		
58.PY4V.**.1082.000	Aluminium lower frontal profile - 1082 mm to be cut on size for crystal profile	10 pcs

** colour codes: N2 = Coffee Black / S8 = Storm Grey / A6 = standard Grey / F1 = Polar White

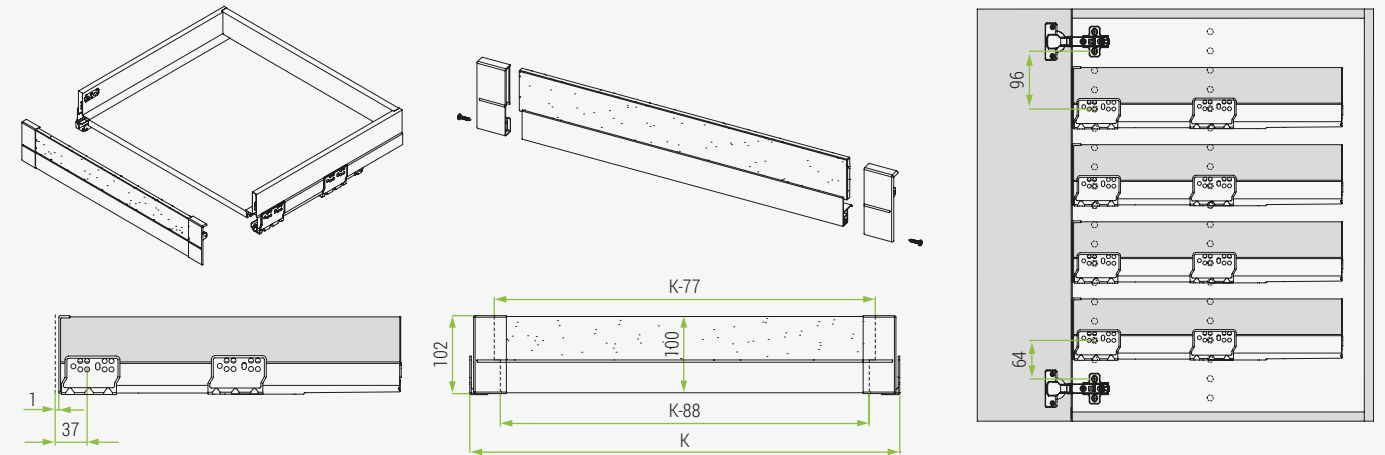


Solution with crystal front

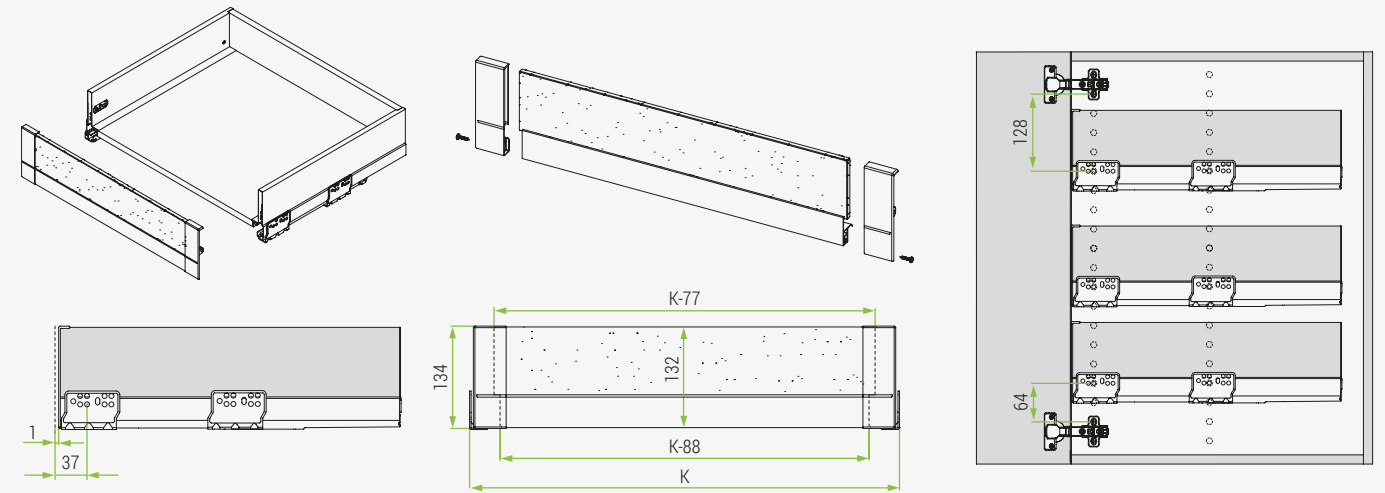
Ten² IN internal drawer - crystal front

Drilling & front dimensions

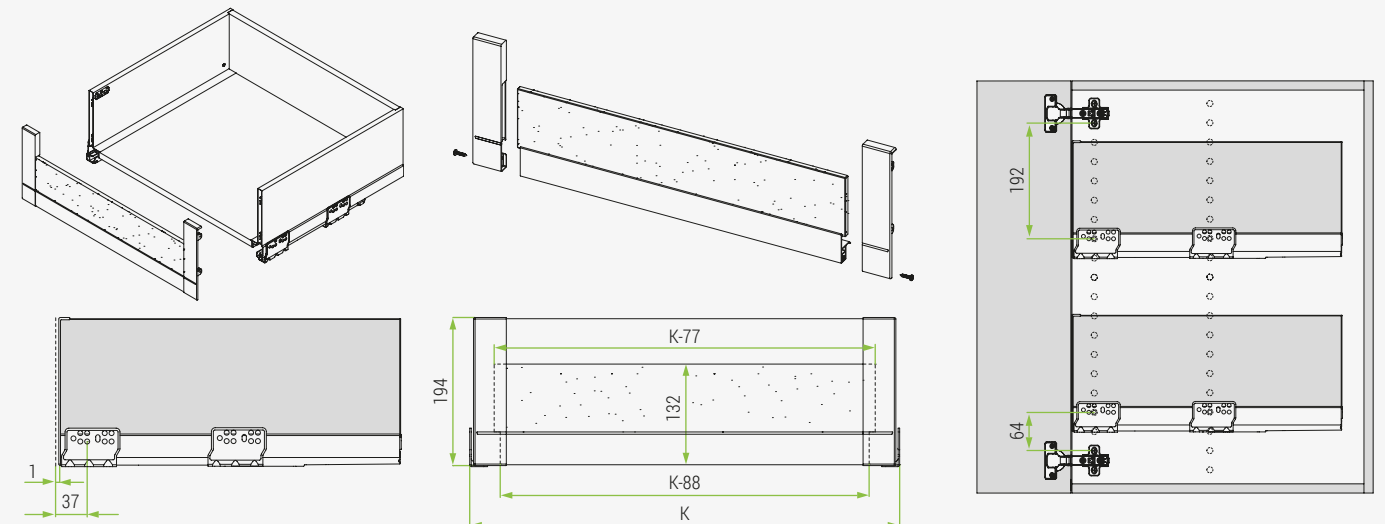
Drawer H90



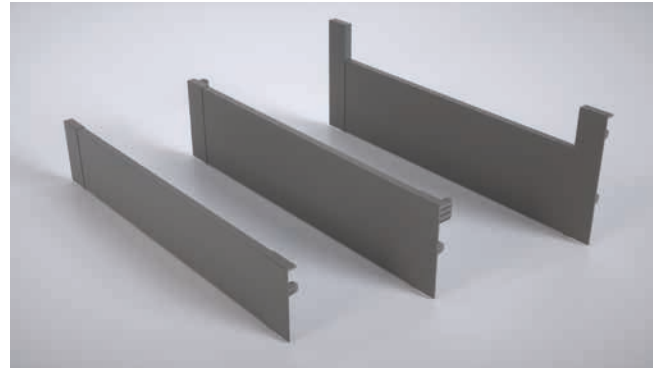
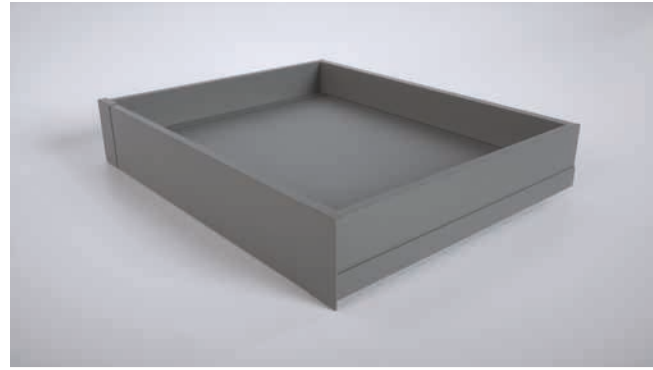
Drawer H120



Drawer H180



Ten² IN internal drawer - aluminium front



Technical Specifications:

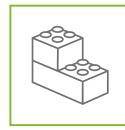
- Kit for 4-sided internal drawer for elegant and practical function
- Plastic frontal brackets with improved fixing system to ensure a stronger coupling and a perfect match with lateral panels
- Brackets available in 3 heights: 90, 120 and 180 mm
- Aluminium front with elegant shape to be cut on size of the drawer width and to be used with frontal brackets
- No need for edge banding on the front of the drawer bottom
- Standard clip-on function for ease of assembly
- Four standard metal finishes matching perfectly the drawer finish: Coffee Black, Storm Grey, standard Grey and Polar White
- High-end look thanks to elegant materials and perfect finishing



SLOWMOTION



ONETOUCH



EASY ASSEMBLY



PERFECT INDUSTRIALISATION

IN drawer H90

Code	Description	Packing
58.AY4A.**.0000.000	Set of plastic frontal brackets for internal drawer H90	50 sets
58.PY4A.**.1082.000	Aluminium front panel – 1082 mm to be cut on size	10 pcs

** colour codes: N2 = Coffee Black / S8 = Storm Grey / A6 = standard Grey / F1 = Polar White

IN drawer H120

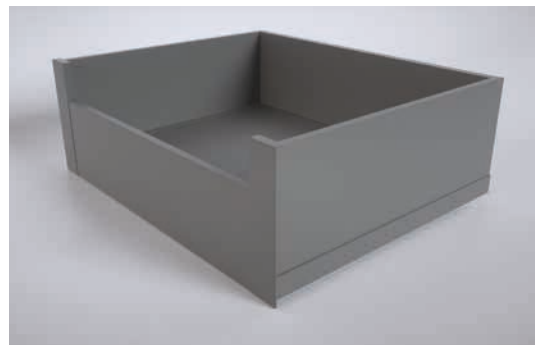
Code	Description	Packing
58.AY4B.**.0000.000	Set of plastic frontal brackets for internal drawer H120	50 sets
58.PY40.**.1082.000	Aluminium front panel – 1082 mm to be cut on size	10 pcs

** colour codes: N2 = Coffee Black / S8 = Storm Grey / A6 = standard Grey / F1 = Polar White.

IN drawer H180

Code	Description	Packing
58.AY4S.**.0000.000	Set of plastic frontal brackets for internal drawer H180	50 sets
58.PY40.**.1082.000	Aluminium front panel – 1082 mm to be cut on size	10 pcs

** colour codes: N2 = Coffee Black / S8 = Storm Grey / A6 = standard Grey / F1 = Polar White

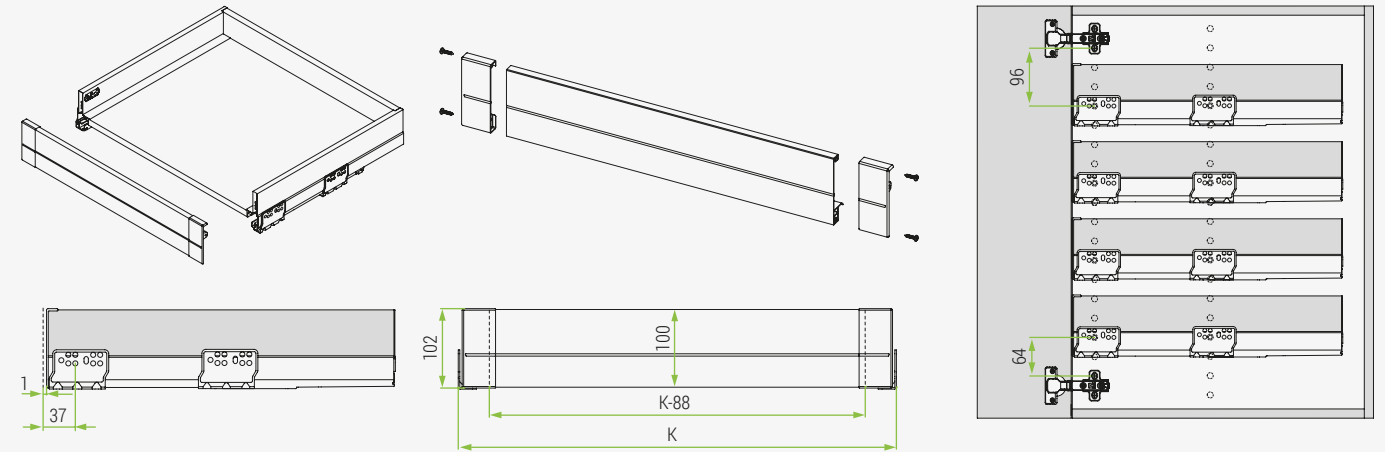


Solution with aluminium front

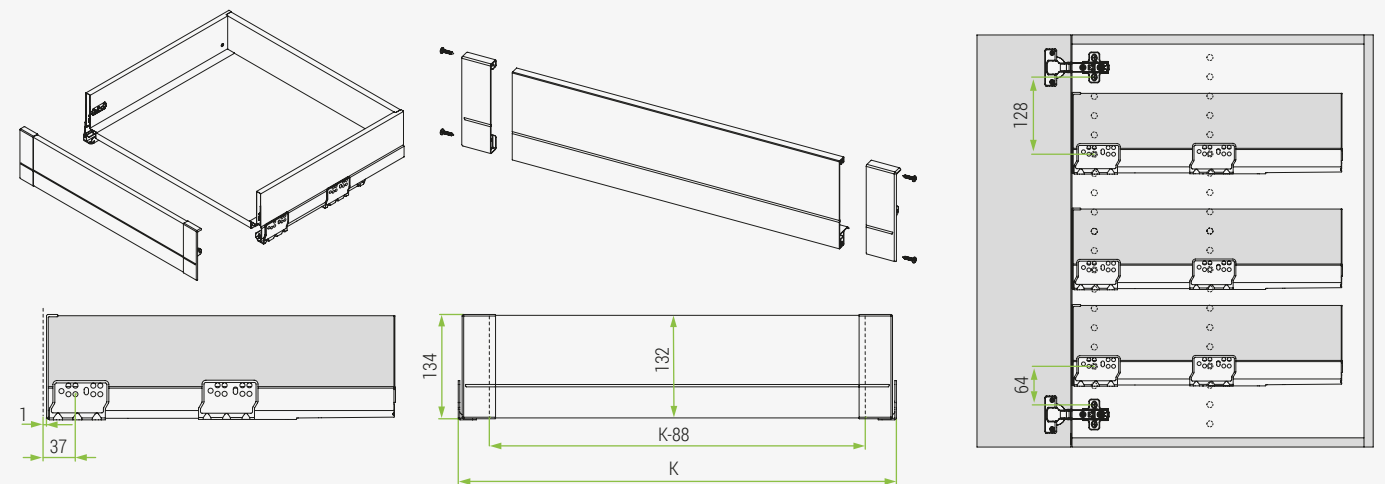
Ten² IN internal drawer - aluminium front

Drilling & front dimensions

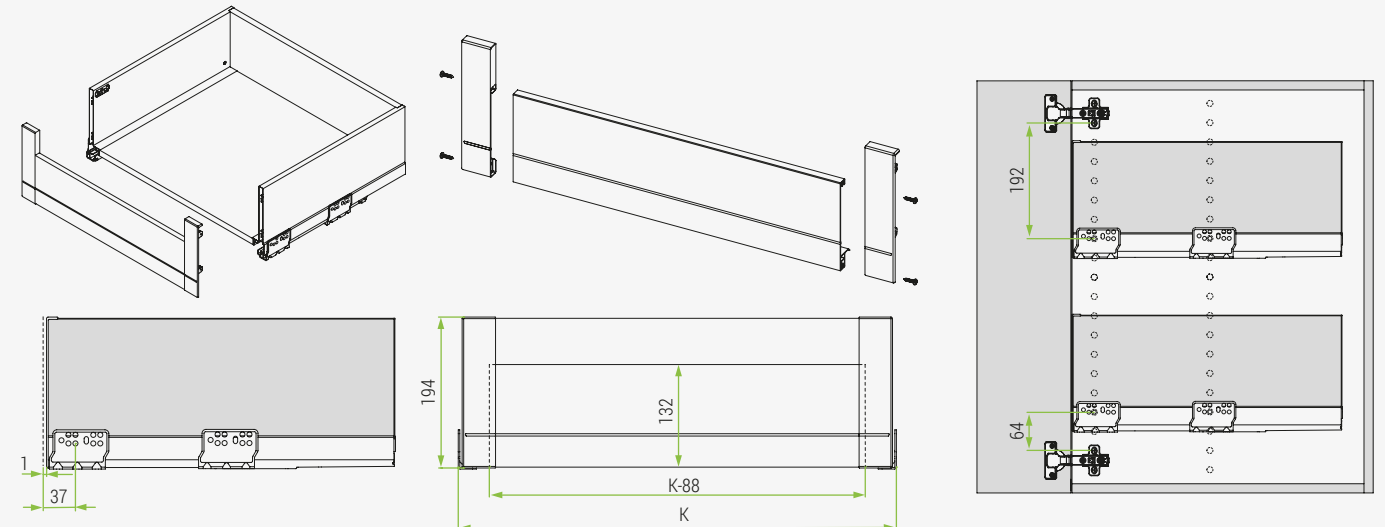
Drawer H90

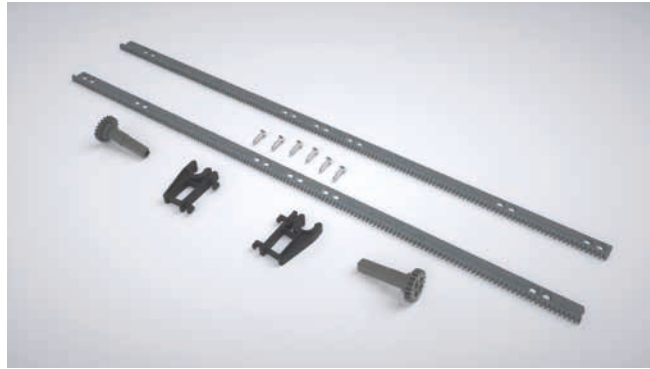


Drawer H120



Drawer H180





Technical Specifications:

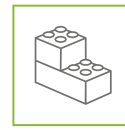
- Ten² Stabilizer kit for a perfect stability of the complete range of drawer widths also in a full load capacity condition
- Ideal for wide drawer applications
- Recommended for drawers and pan drawers over 900 mm of width
- Excellent drawer sliding motion
- Smooth movement and silent sliding of the drawer
- Discrete design for a non-invasive solution



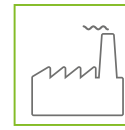
SLOWMOTION



ONETOUCH



EASY ASSEMBLY



PERFECT INDUSTRIALISATION

Code	Description	Packing
58.CYA0.06.0000000	Stabilizer kit for drawer	50 kits
Kit consisting of: 2 racks, 2 pinions, 2 back brackets, 6 selftapping screws (Ø4x12 mm). The racks are pre-cut based on 450/500/550 mm drawer depths.		
58.CXT0.0A.120.0000	Stabilizer connecting bar - 1200 mm to be cut on size	50 pcs
** colour codes: N2 = Coffee Black / S8 = Storm Grey / A6 = standard Grey / F1 = Polar White.		

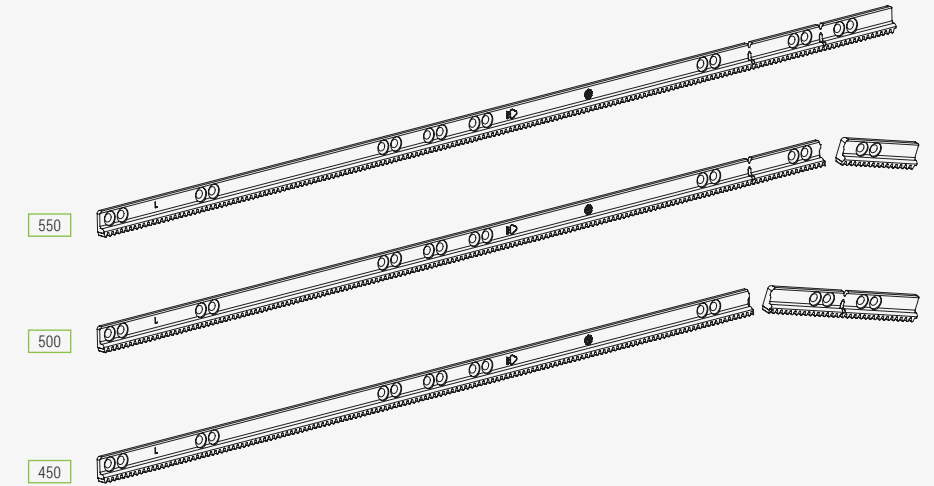


Stabilizer application

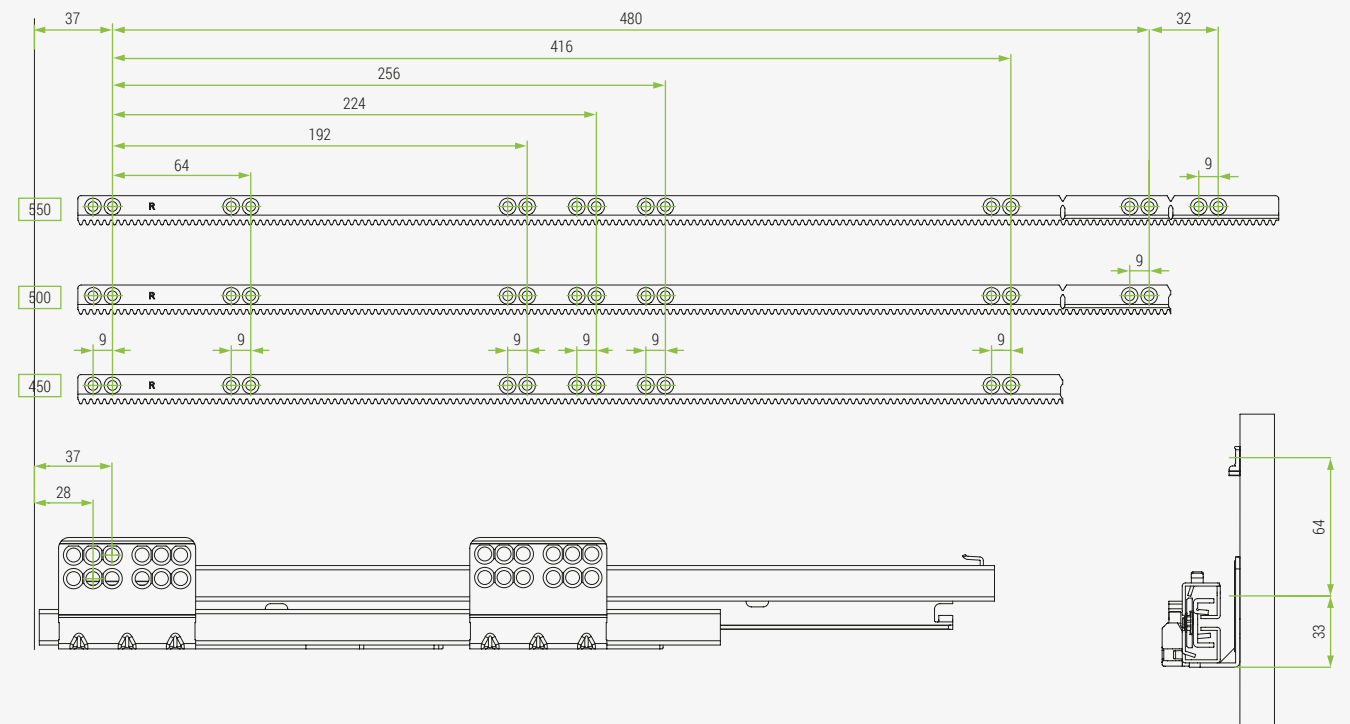


Stabilizer connecting bar

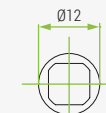
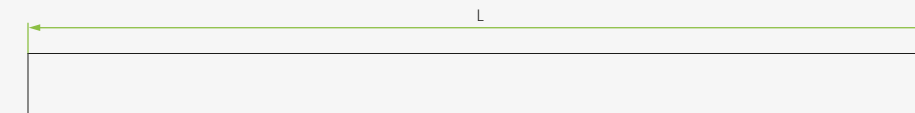
Fixing dimensions & positions



RIGHT SIDE

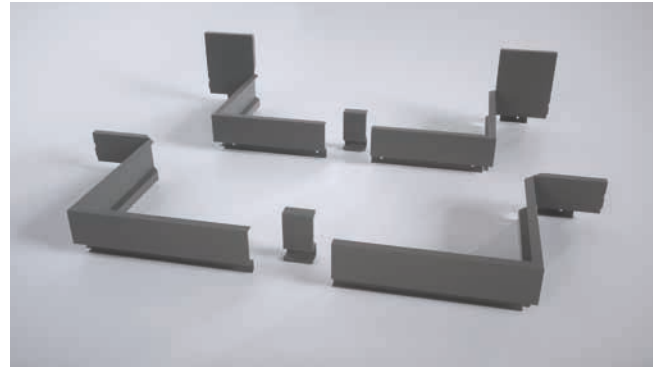
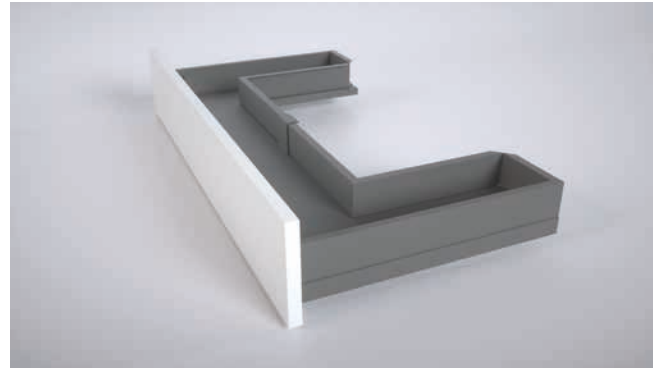


Stabilizer connecting bar



Drawer width	L
600	515
800	715
900	815
1000	915
1200	1115

Ten² Acquario undersink solution



Technical Specifications:

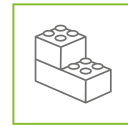
- Acquario undersink drawer solution for perfect space management around the siphon
- Kit made by two steel foldable back panels with a central connector
- Available in H90 and H180 mm drawer height
- Application from 450 to 550 mm deep drawers
- Efficient space management under the sink and around the siphon
- Easy to assemble and to adapt to the available space
- Four metal finishes: Coffee Black, Storm Grey, standard Grey and Polar White



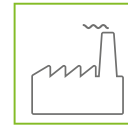
SLOWMOTION



ONETOUCH



EASY ASSEMBLY



PERFECT INDUSTRIALISATION

Code	Description	Packing
58.PYLA.**.^^.U0000	Set Acquario undersink for H90 drawer	10 sets
58.PYLS.**.^^.U0000	Set Acquario undersink for H180 drawer	10 sets

** colour codes: N2 = Coffee Black / S8 = Storm Grey / A6 = standard Grey / F1 = Polar White.
^^ drawer width: 60/80/90/10/12 (example 60 stands for 600 mm drawer width).

Packing in set consisting of:

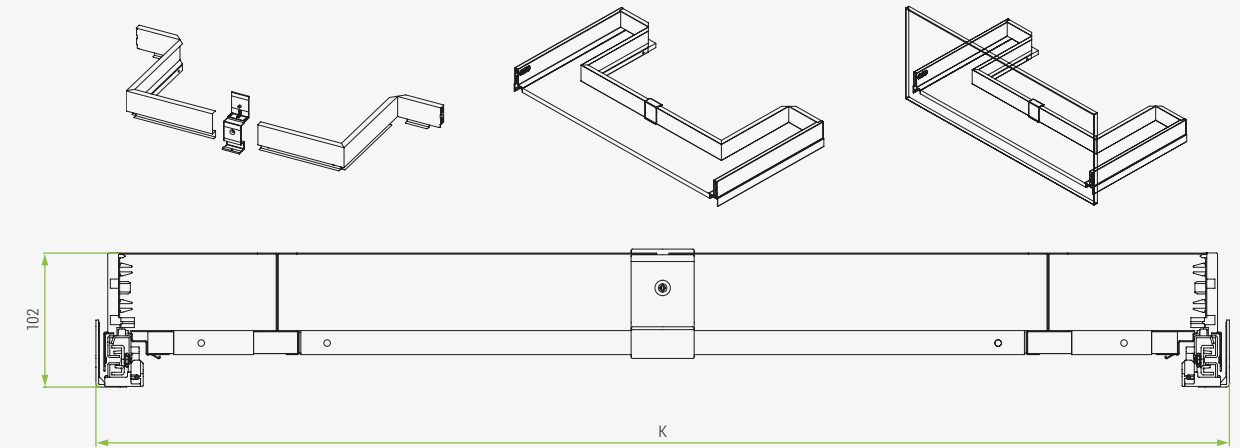
- 1 metal back panel right side
- 1 metal back panel left side
- 1 plastic central connector
- 1 screw (Ø4x11 mm) for central connector fixing



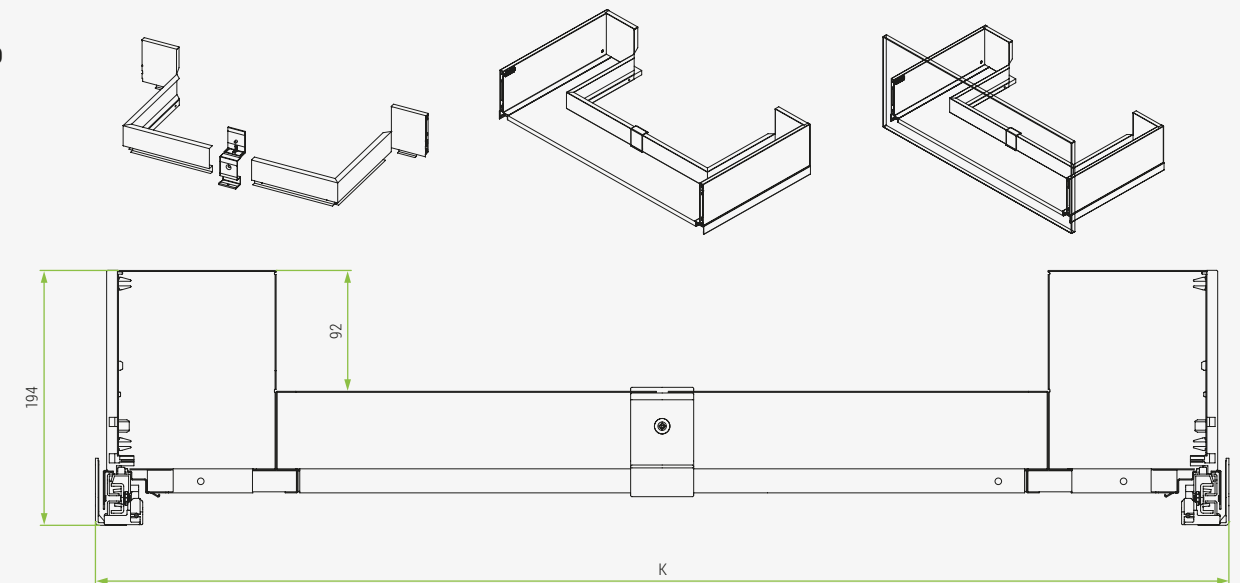
Ten² Acquario undersink solution

Applications

Drawer H90



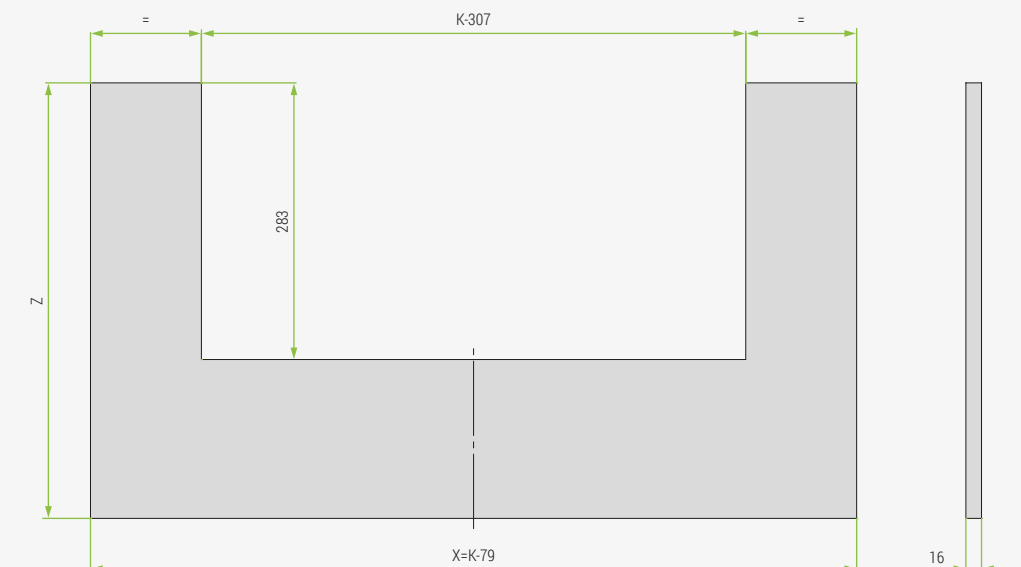
Drawer H180



Bottom panel dimensions

K	Internal cabinet width
X	Bottom panel width
Z	Bottom panel length

Drawer depth	Z
450	445,5
500	495,5
550	545,5



Ten² Kit undersink



Technical Specifications:

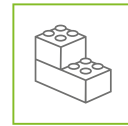
- Ten² undersink drawer kit for an easy and versatile application
- Kit consisting of two separate Ten² drawers
- Available in H90 drawer height
- Application for 450 mm deep drawers
- Efficient space management under the sink and around the siphon
- Easy to assemble and to adapt to the front and the cabinet dimensions
- Four metal finishes: Coffee Black, Storm Grey, standard Grey and Polar White



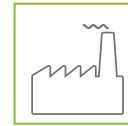
SLOWMOTION



ONETOUCH



EASY ASSEMBLY



PERFECT INDUSTRIALISATION

Code	Description	Packing
58.YASV.**.45.XA000	Ten ² H90 undersink drawer kit 450	1 kit

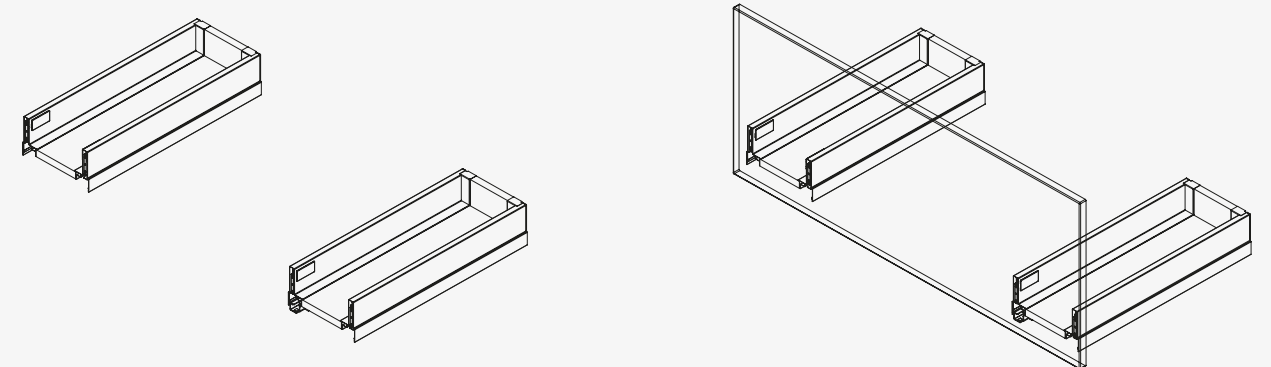
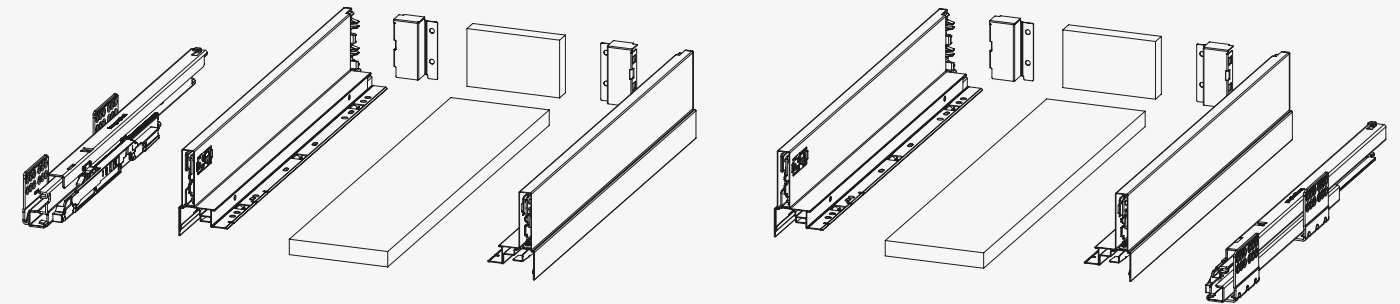
** colour codes: N2 = Coffee Black / S8 = Storm Grey / A6 = standard Grey / F1 = Polar White.

Kit consisting of the following components:

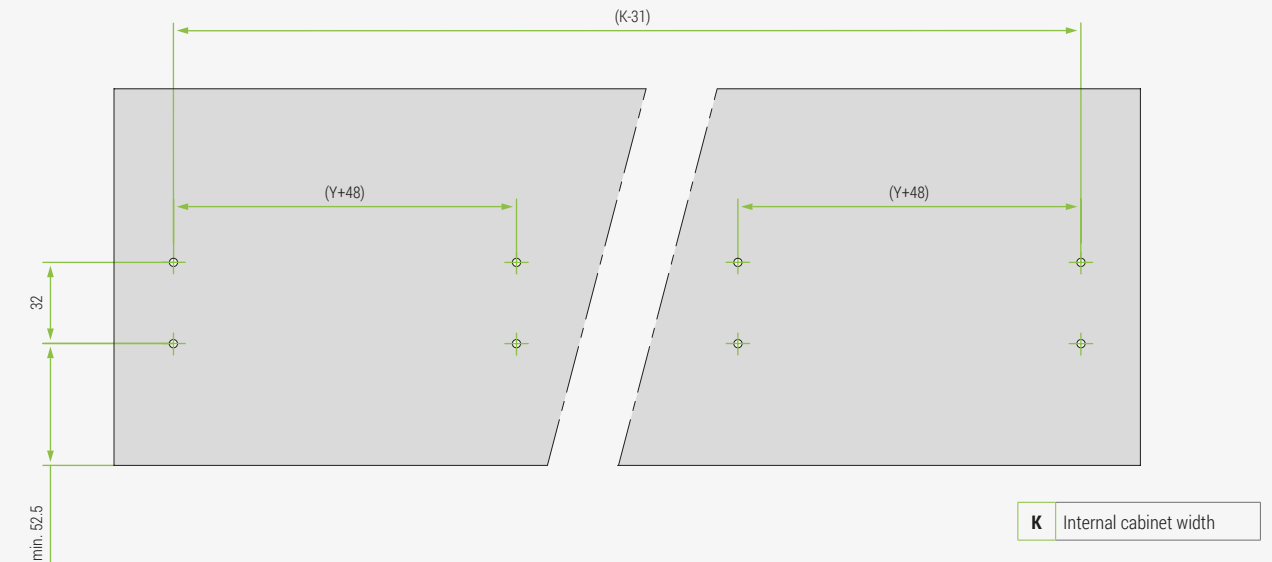
- an assembly instruction
- 2 pairs of left and right drawer sides H90
- a pair of left and right drawer slides 450 mm
- 4 cover caps with FGV logo
- 4 screw-on front brackets
- 2 pairs of back fixing brackets

All individual parts and further components of the system available separately. See the complete catalogue and the assembly instructions.

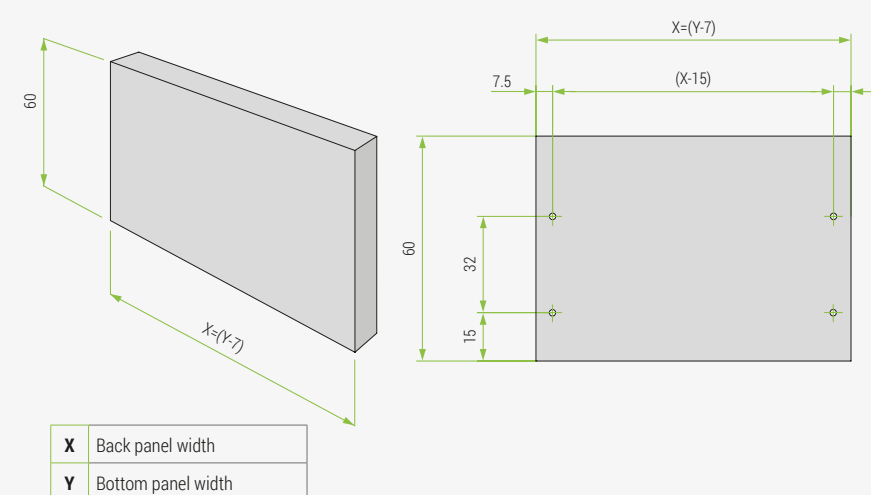
Ten² Kit Undersink



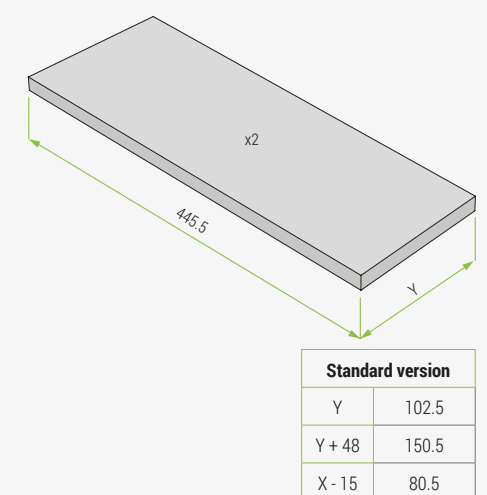
Front panel drilling & dimensions



Back panel drilling & dimensions



Bottom panel dimensions





Technical Specifications:

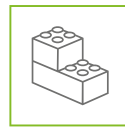
- Ten² standard individual kit for ease of distribution and use
- Each kit contains all elements necessary for the realisation of a drawer with exception of the wooden back and bottom panels
- A few kits cover the necessity of almost usual applications
- No necessity to stock individual components in large volumes and remain with unpaired components
- Ease of transport on site of the packed products and hassle free assembly on site
- Easy to sell over the counter



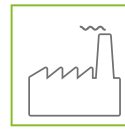
SLOWMOTION



ONETOUCH



EASY ASSEMBLY



PERFECT INDUSTRIALISATION

Code	Description	Packing
58.YAKV.**.27.XA000	Ten ² H90 standard drawer kit 275	1 kit
58.YAKV.**.30.XA000	Ten ² H90 standard drawer kit 300	1 kit
58.YAKV.**.35.X0000	Ten ² H90 standard drawer kit 350	1 kit
58.YAKV.**.40.XA000	Ten ² H90 standard drawer kit 400	1 kit
58.YAKV.**.45.XA000	Ten ² H90 standard drawer kit 450	1 kit
58.YAKV.**.50.XA000	Ten ² H90 standard drawer kit 500	1 kit
58.YAKV.**.55.XA000	Ten ² H90 standard drawer kit 550	1 kit
58.YBKV.**.27.XA000	Ten ² H120 standard drawer kit 275	1 kit
58.YBKV.**.30.XA000	Ten ² H120 standard drawer kit 300	1 kit
58.YBKV.**.35.XA000	Ten ² H120 standard drawer kit 350	1 kit
58.YBKV.**.40.XA000	Ten ² H120 standard drawer kit 400	1 kit
58.YBKV.**.45.XA000	Ten ² H120 standard drawer kit 450	1 kit
58.YBKV.**.50.XA000	Ten ² H120 standard drawer kit 500	1 kit
58.YBKV.**.55.XA000	Ten ² H120 standard drawer kit 550	1 kit
58.YSKV.**.27.XA000	Ten ² H180 standard drawer kit 275	1 kit
58.YSKV.**.30.XA000	Ten ² H180 standard drawer kit 300	1 kit
58.YSKV.**.35.XA000	Ten ² H180 standard drawer kit 350	1 kit
58.YSKV.**.40.XA000	Ten ² H180 standard drawer kit 400	1 kit
58.YSKV.**.45.XA000	Ten ² H180 standard drawer kit 450	1 kit
58.YSKV.**.50.XA000	Ten ² H180 standard drawer kit 500	1 kit
58.YSKV.**.55.XA000	Ten ² H180 standard drawer kit 550	1 kit

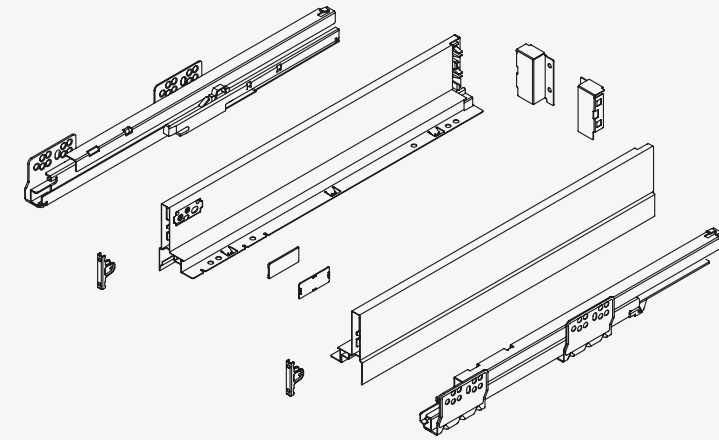
** colour codes: N2 = Coffee Black / S8 = Storm Grey / A6 = standard Grey / F1 = Polar White

Kit consisting of the following components for a given drawer dimension:

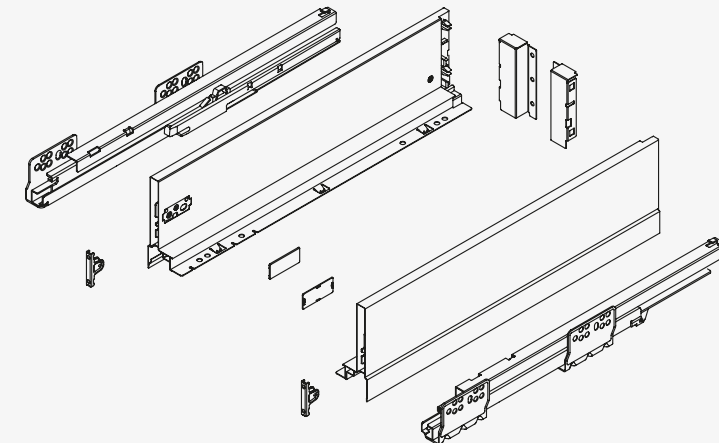
- an assembly instruction
- a pair of left and right drawer sides
- a pair of left and right drawer slides
- a pair of cover caps with FGV logo
- a pair of screw-on front brackets
- a pair of back fixing brackets

All individual parts and further components of the system available separately. See the complete catalogue and the assembly instructions.

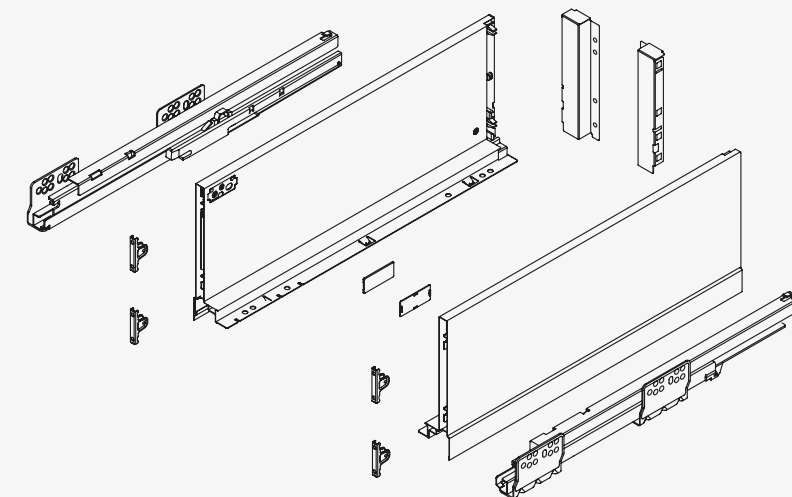
H90

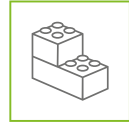


H120

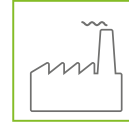


H180

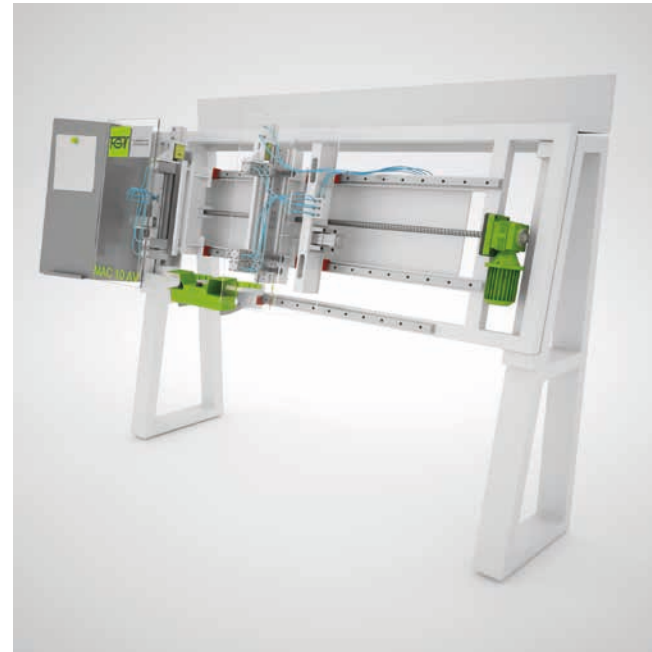




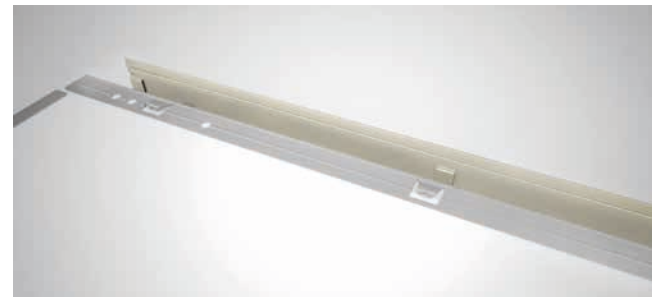
EASY ASSEMBLY



PERFECT INDUSTRIALISATION



MAC 10 AV automatic assembly machine for Ten² drawers



ClawFix

MAC 10 AV fully automatic assembly machine for Ten² drawers

- For H90, H120 and H180 Ten² drawers
- Quick step adjustment from 275 to 550 mm
- Quick step adjustment of width from 300 to 1200 mm
- Very fast assembly on bottom without groove
- Works with metal back and wooden back panel
- Economical and safe
- Pneumatic operation: the machine assembles sides, back and bottom of the drawer
- To be positioned against the wall or free standing

All new tool-less fixing with ClawFix technology without the need for grooving or with screw fixing

Code	Description	Packing
A9.TMAC.10.A.000000	Mac 10 AV automatic assembly machine for Ten ² drawers	1 pcs

Please request the separate documentation and the instructions of use of this machine.

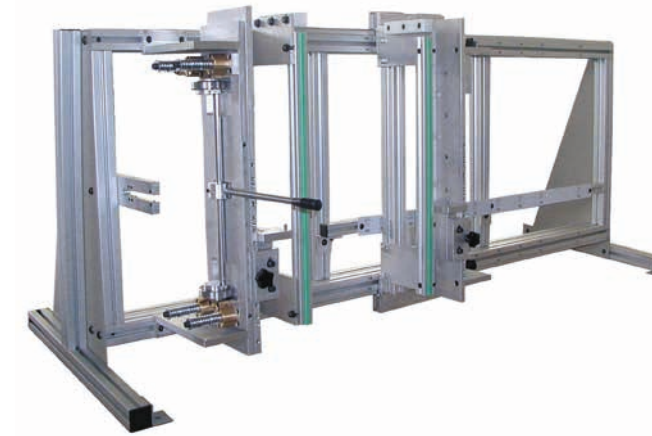
Drilling jig

Code	Description	Packing
A0.P200.00.00000	Drilling jig	1 pcs



MAC 10 MV manual assembly machine for Ten² drawers

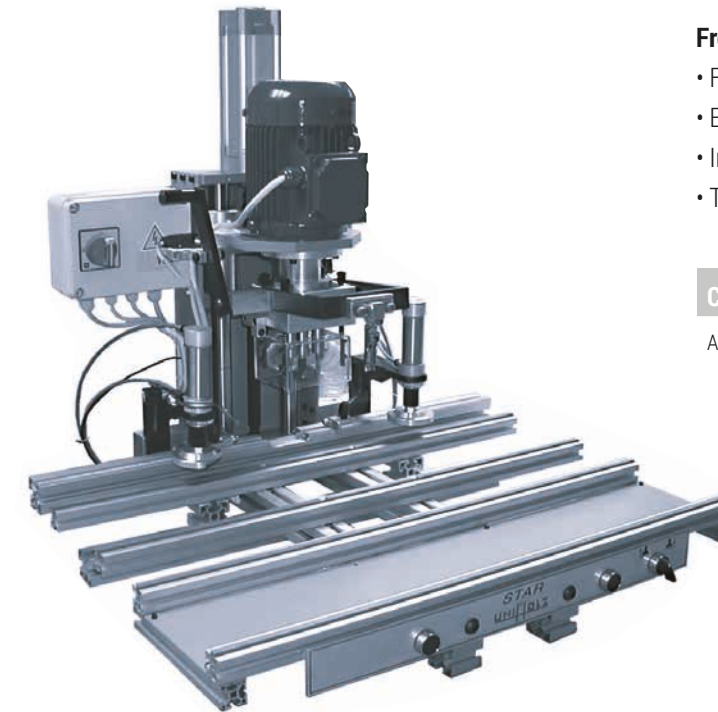
- For H90, H120 and H180 Ten² drawers
- For lengths from 275 to 550 mm
- Adjustment of width from 300 to 1200 mm
- Manual operation: the machine keeps the drawer components in position to be fixed by the operator
- To be positioned on a worktop



Code	Description	Packing
A9.TMAC.10.M.000A00	Mac 10 MV manual assembly machine for drawers	1 pcs

Front drilling and insertion machine

- For front fix with 10 mm pegs equipped with insertion ram
- Easy positioning of the front with removable stops left and right
- Insertion ram to hold the front fixing
- To be positioned on a worktop



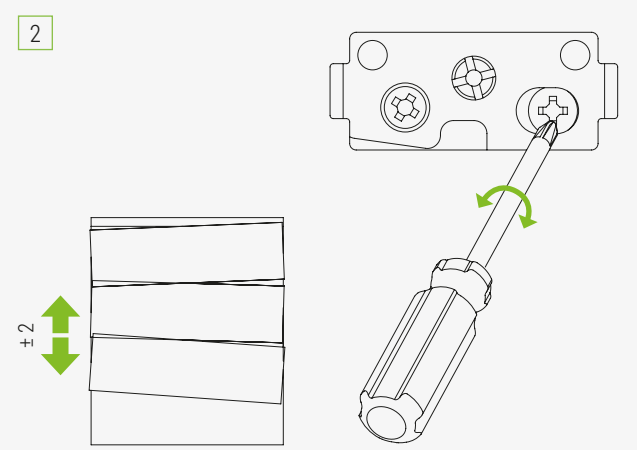
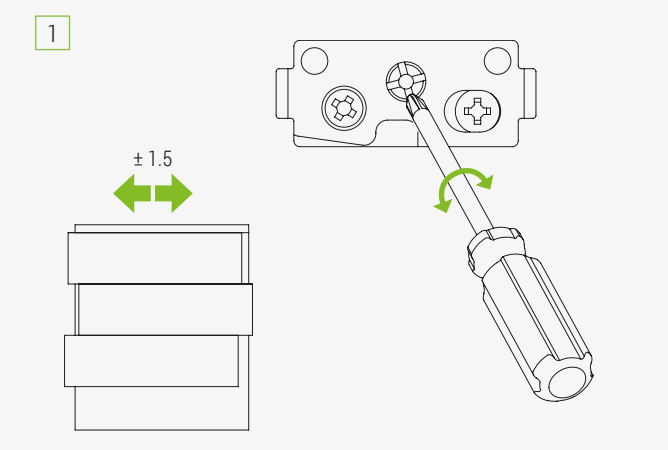
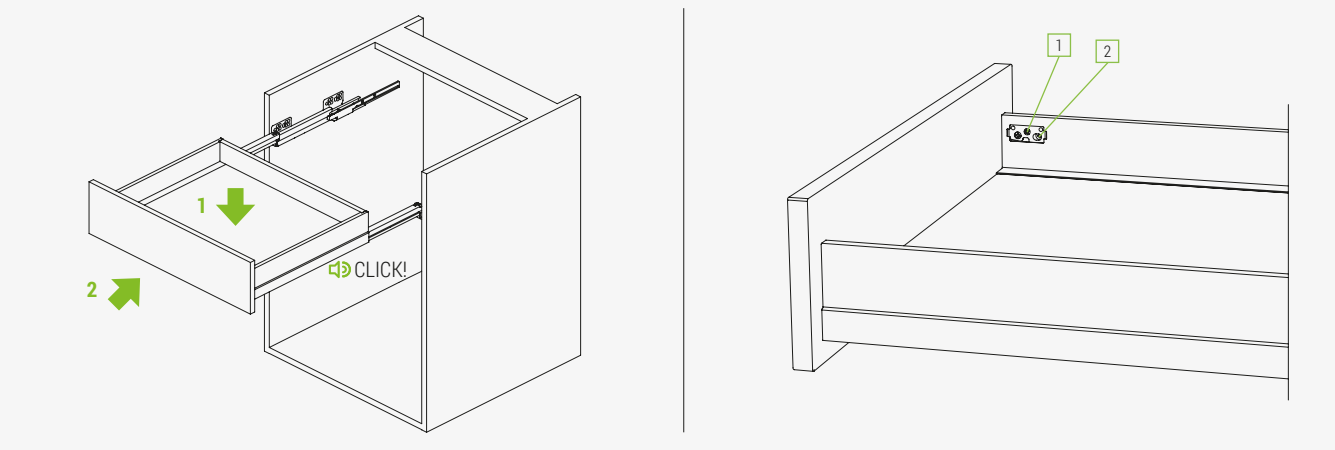
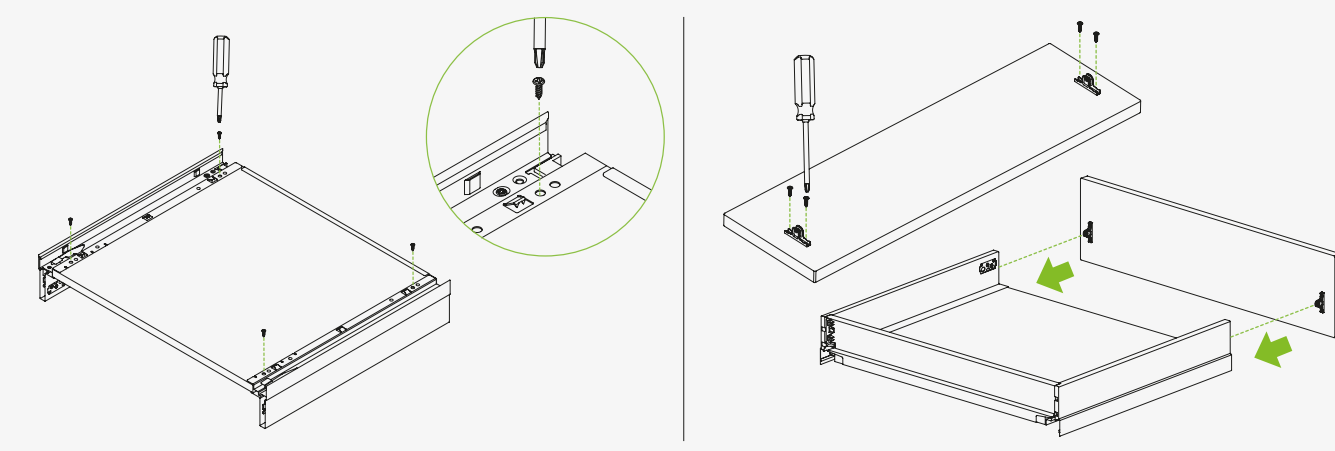
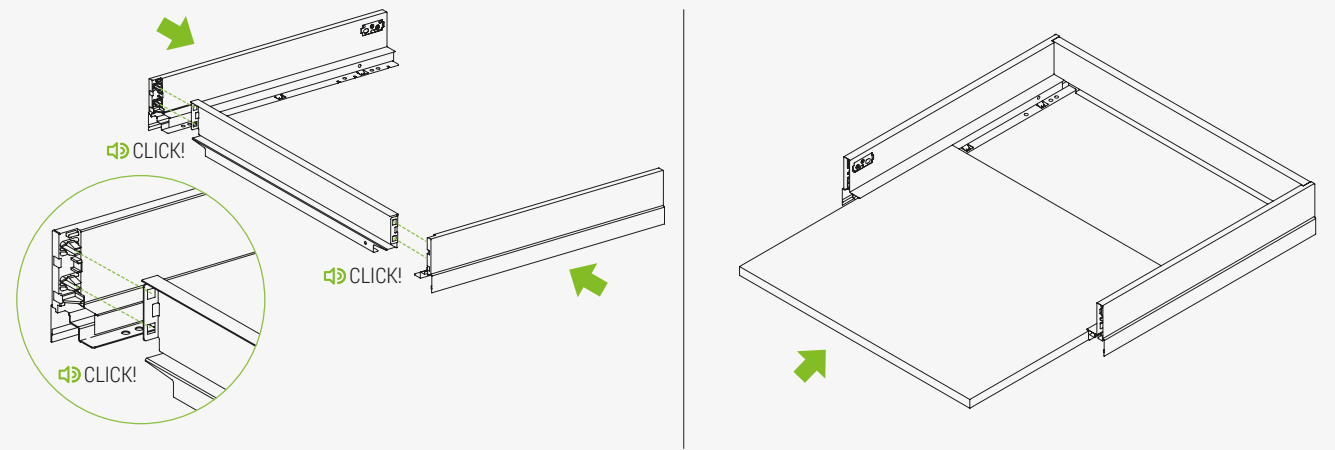
Code	Description	Packing
A5.ODEL.IB.4800000	Drilling and insertion machine	1 pcs

Ten² front fixing tools

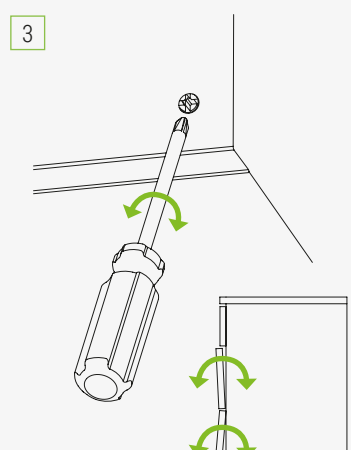
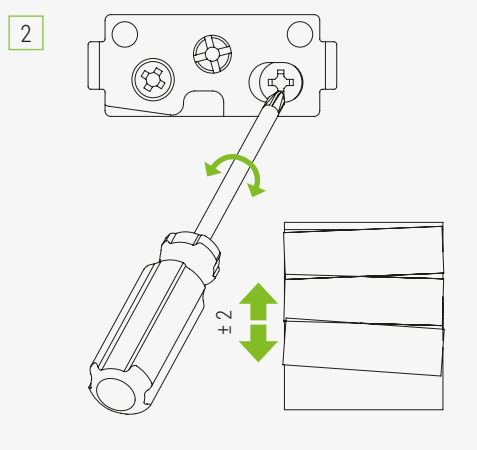
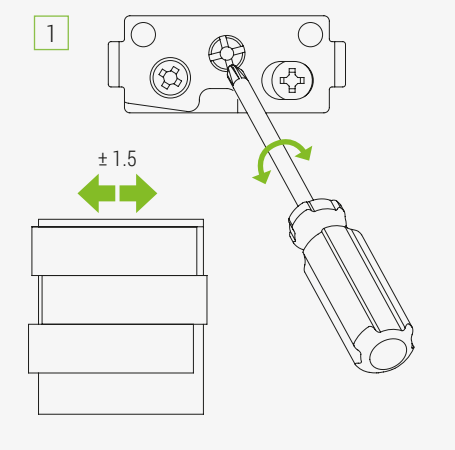
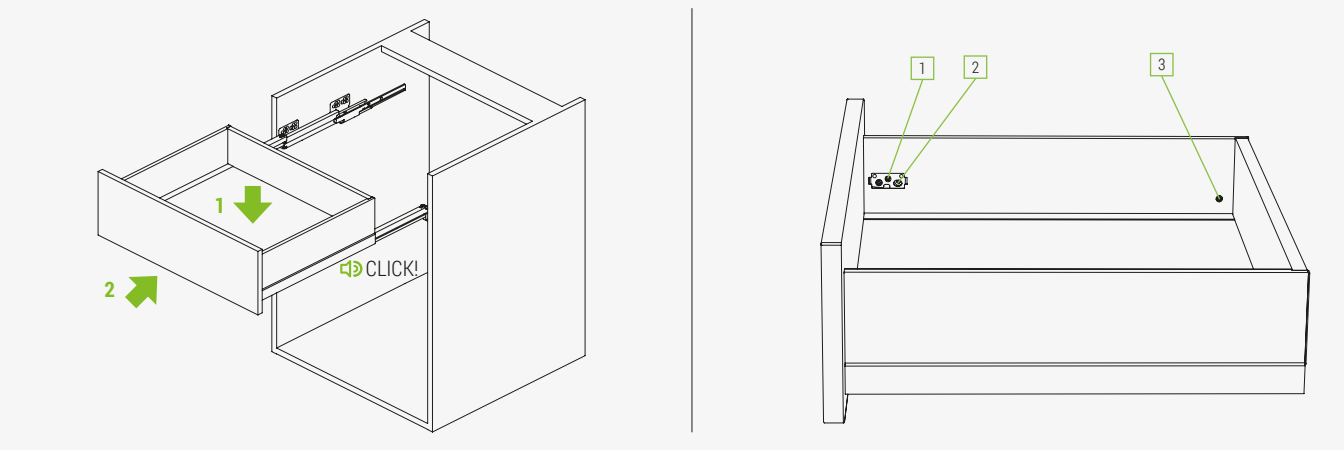
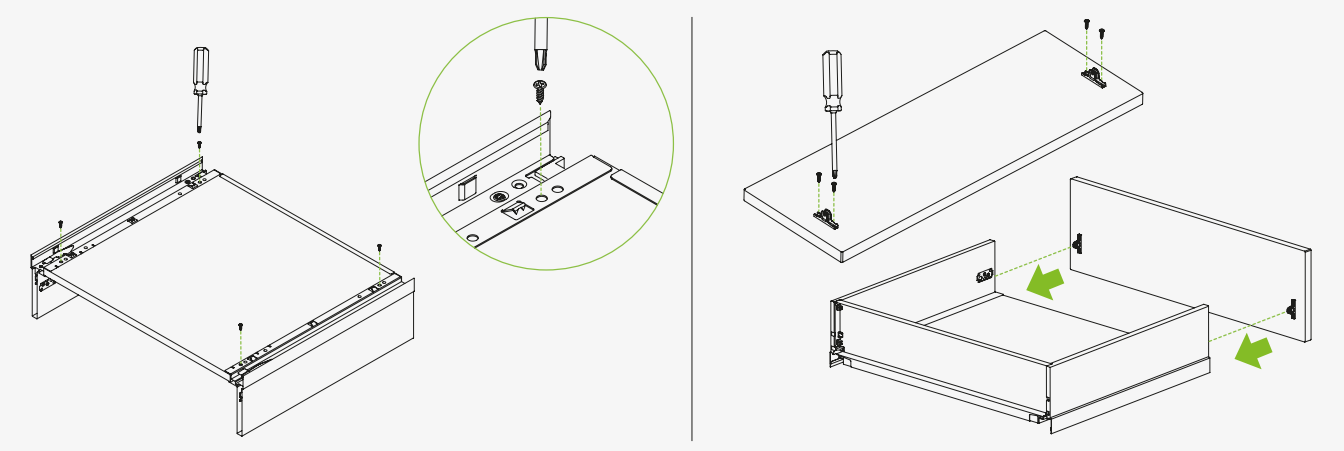
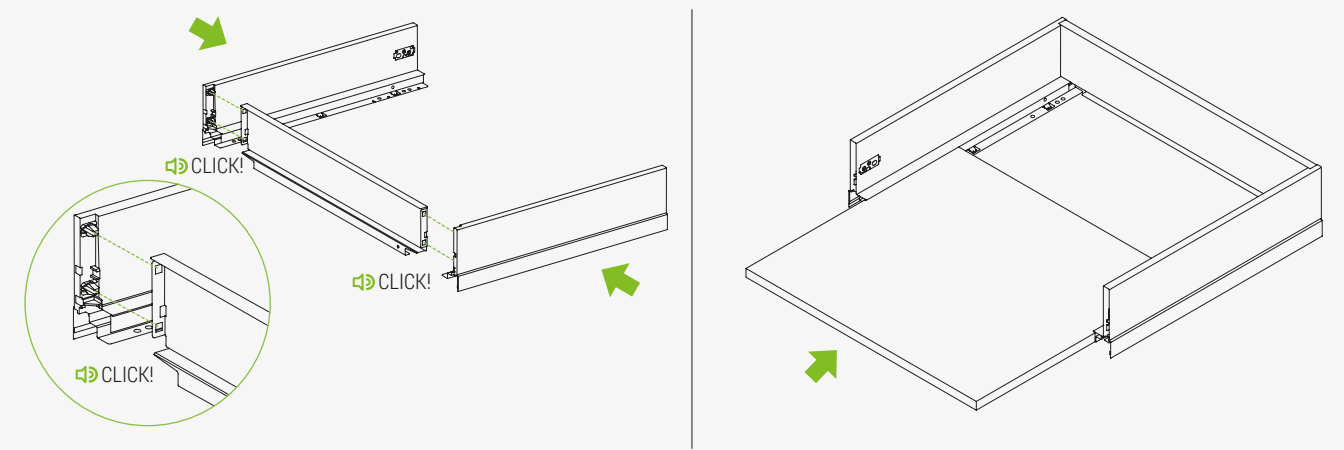
Code	Description	Packing
A0.Y000.00.00.000	Inserting tool for front brackets	25 pcs



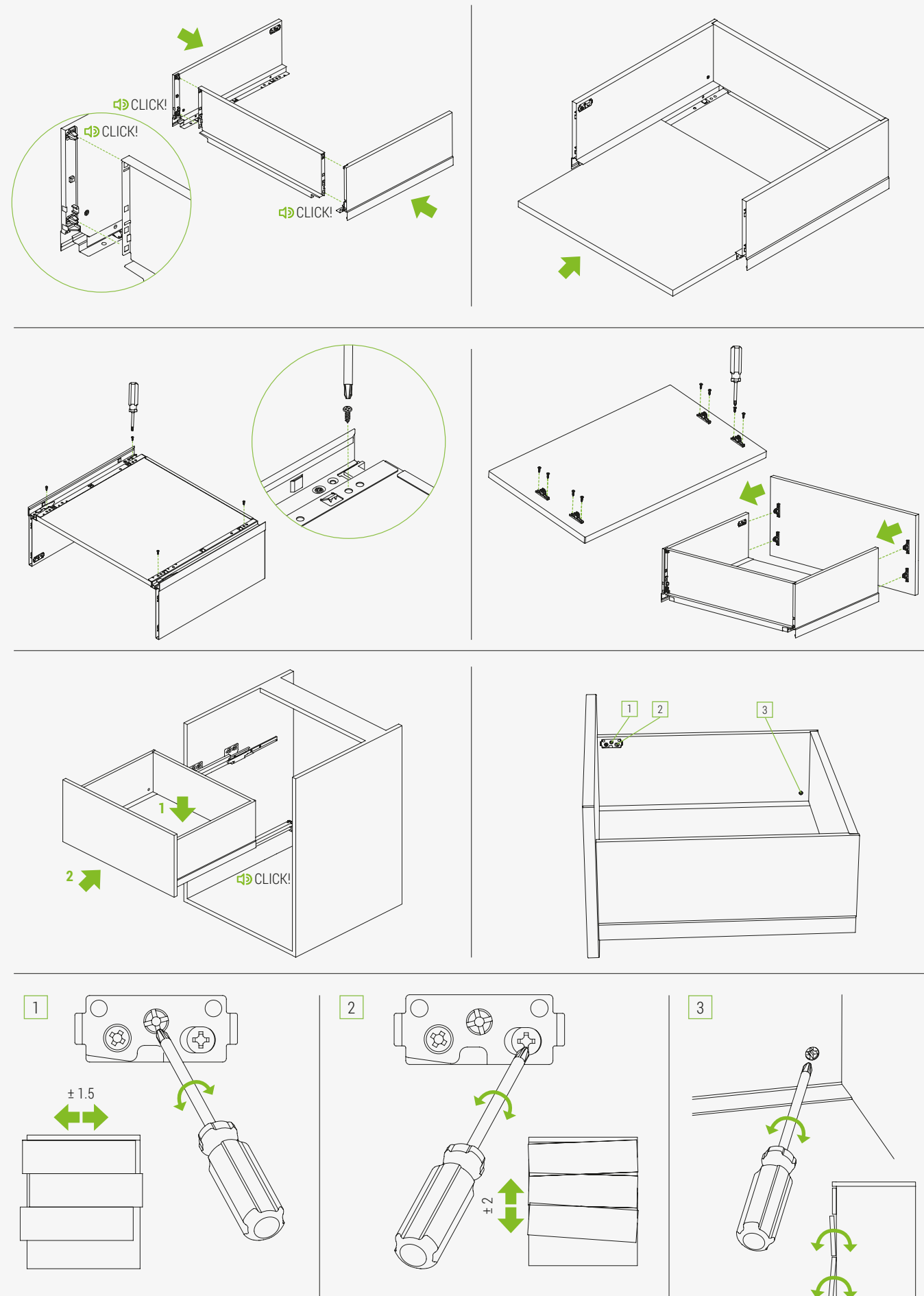
Drawer H90 assembly sequence



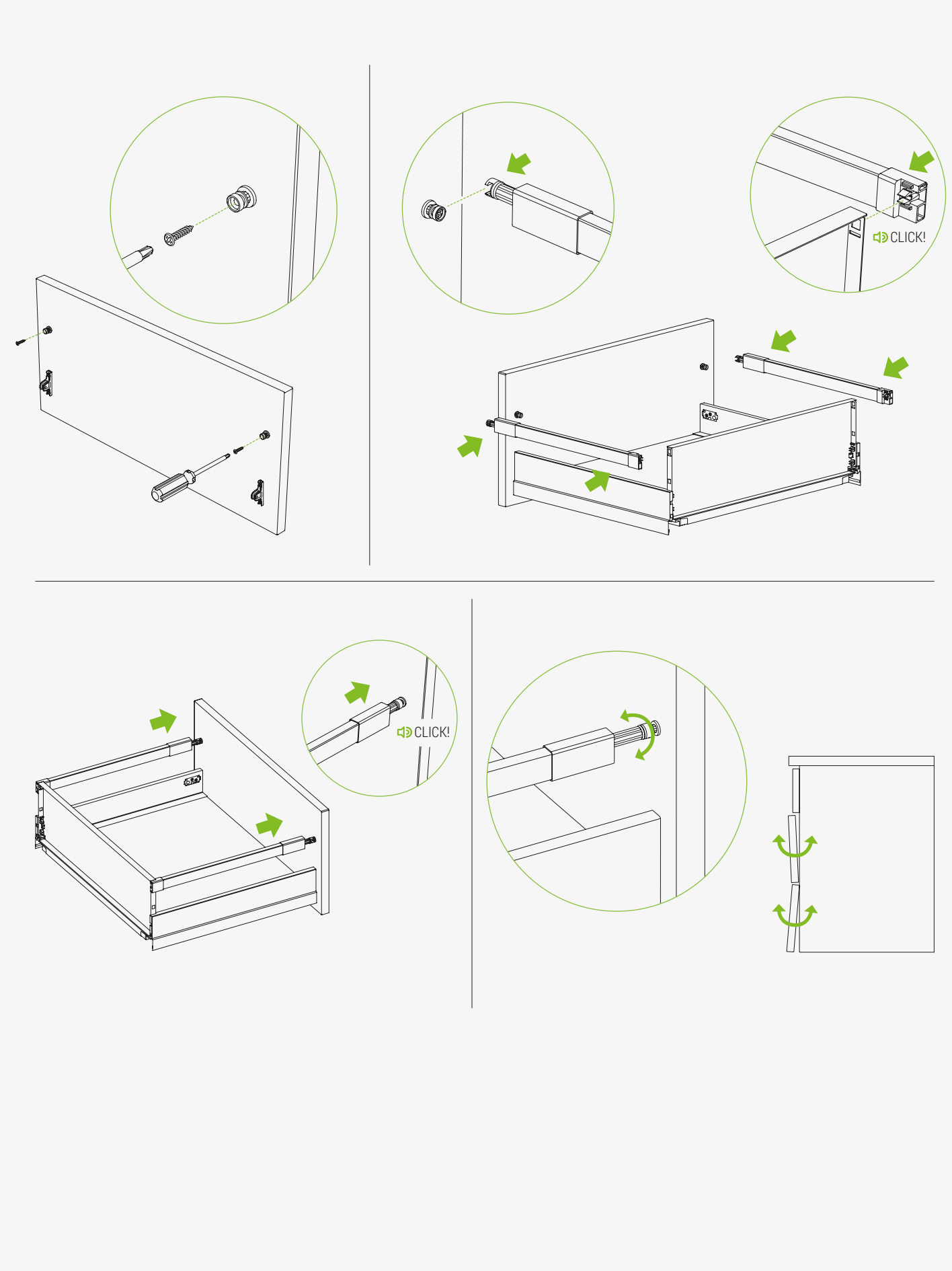
Drawer H120 assembly sequence



Drawer H180 assembly sequence

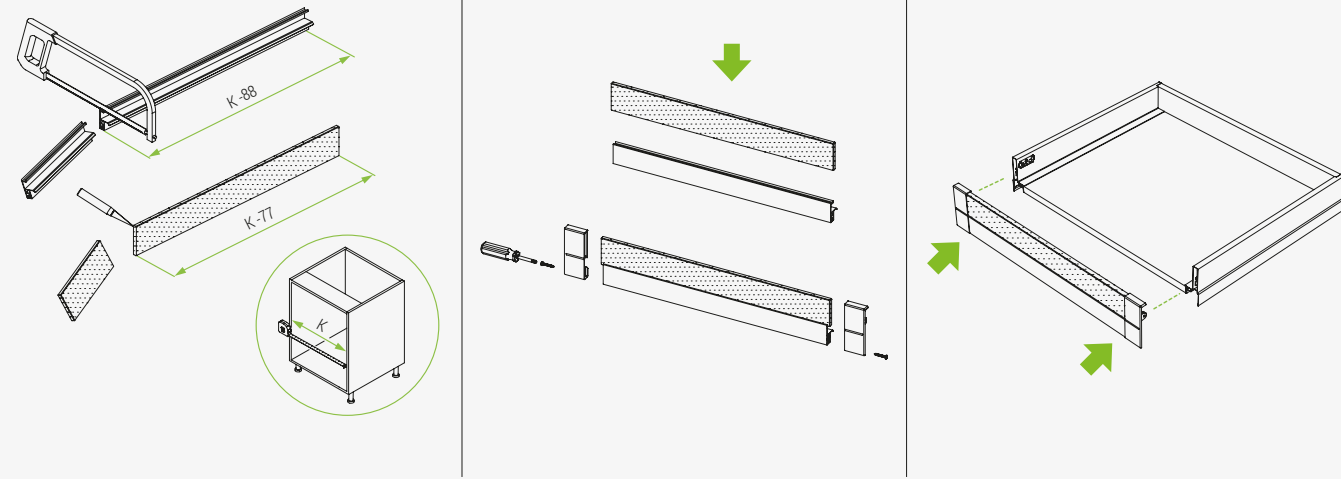


Rectangular railing assembly sequence

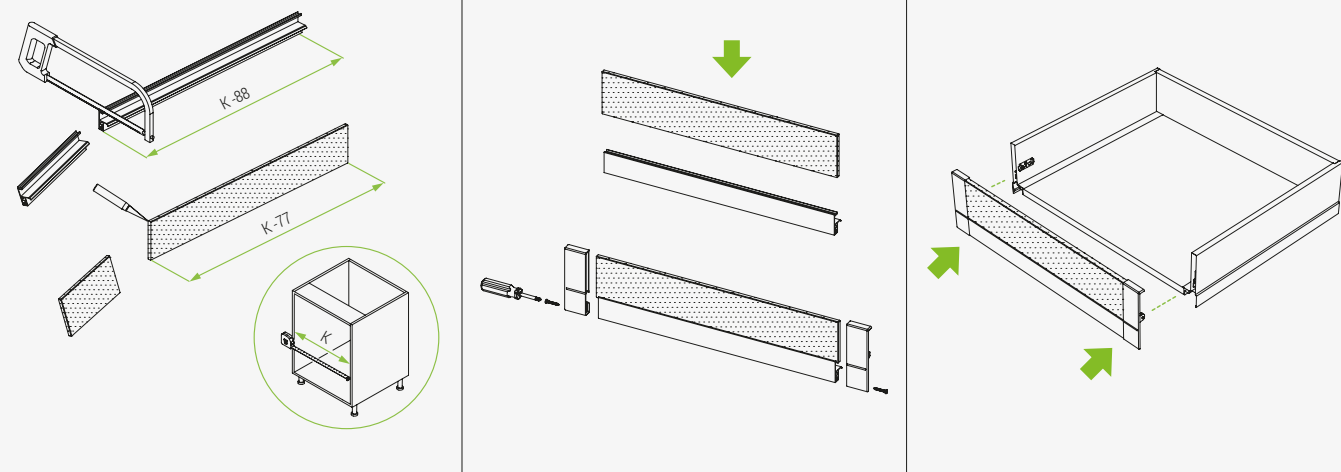


IN internal drawer assembly sequence | Crystal profile

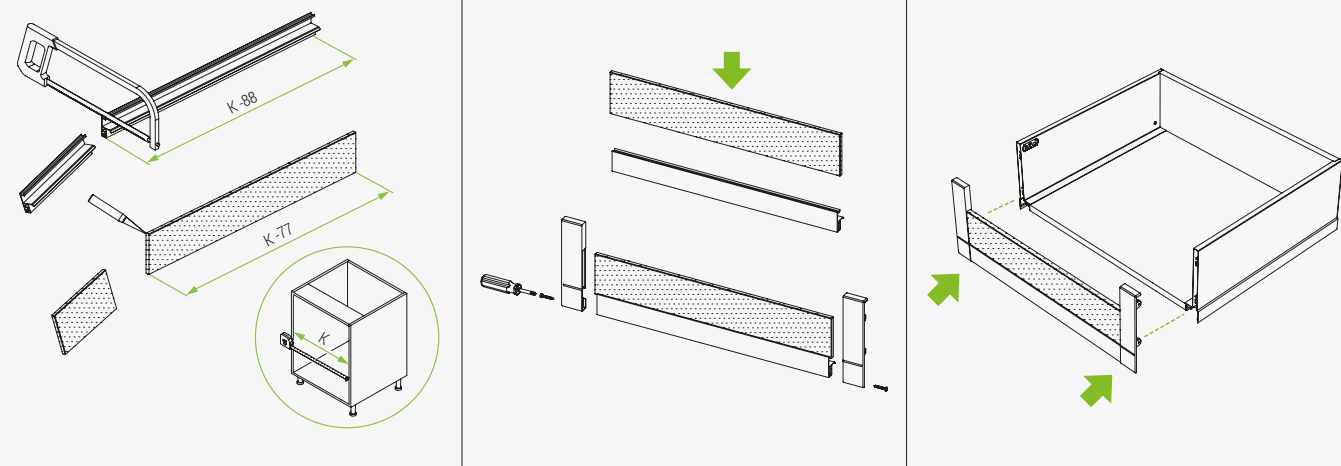
Drawer H90



Drawer H120

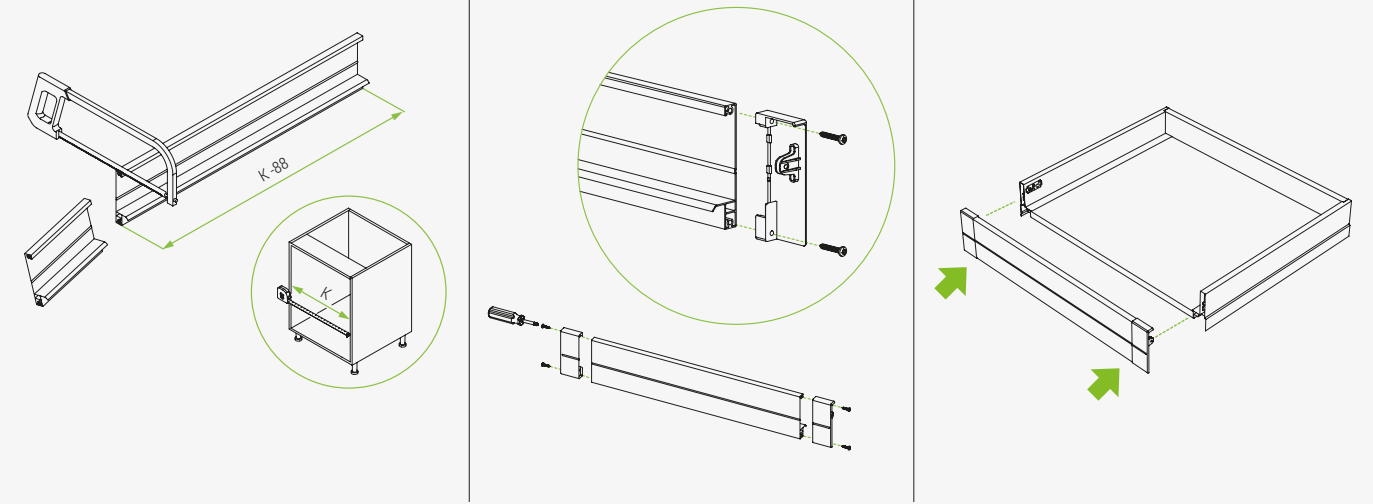


Drawer H180

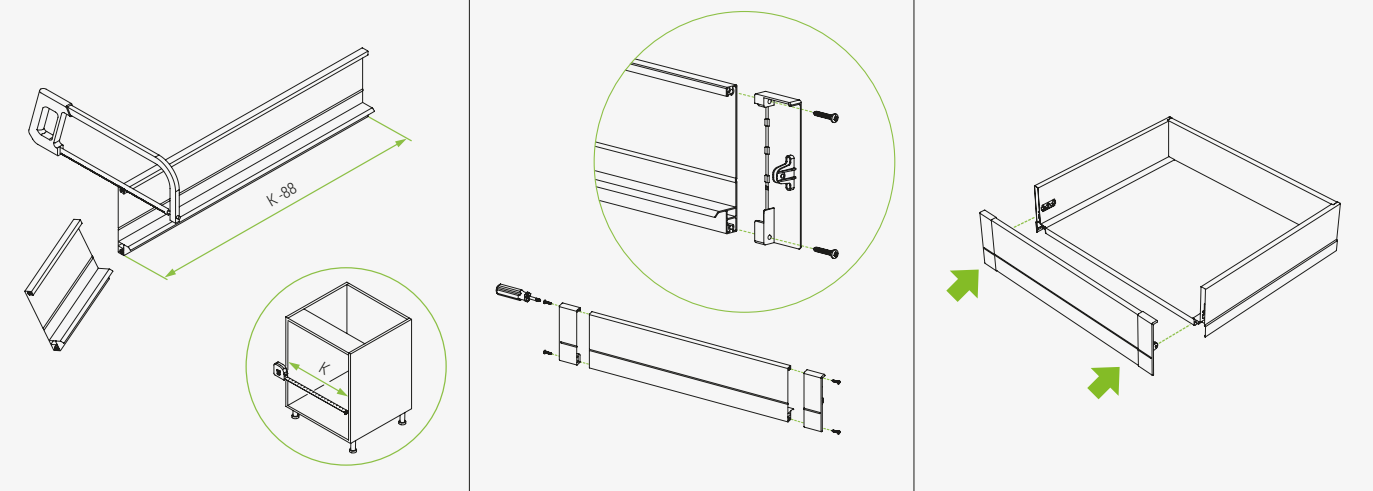


IN internal drawer assembly sequence | Aluminium profile

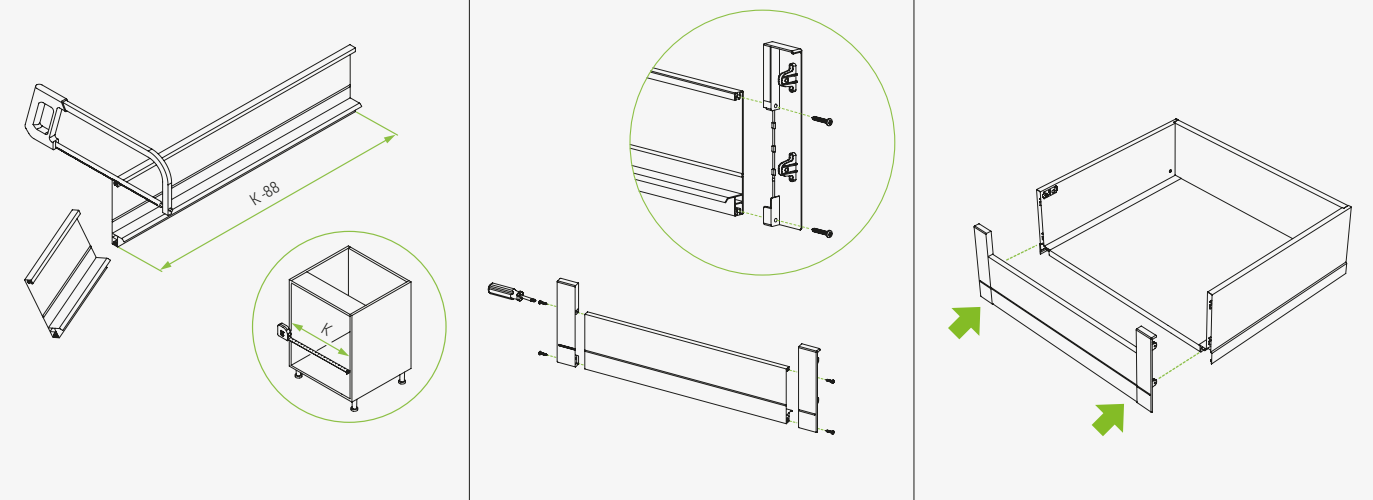
Drawer H90



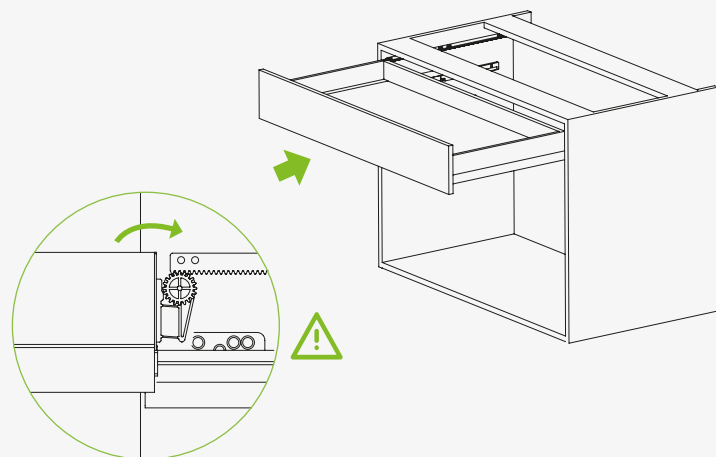
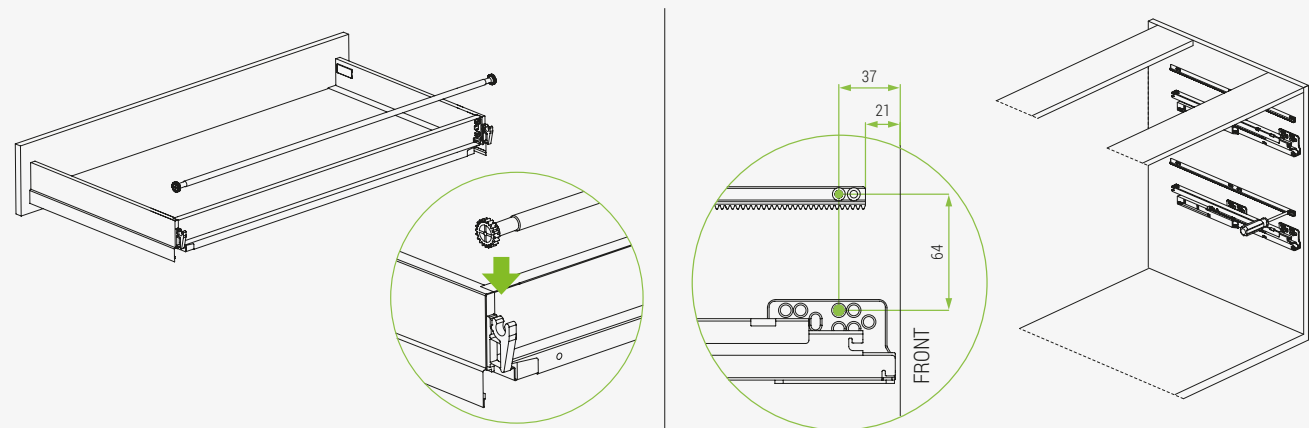
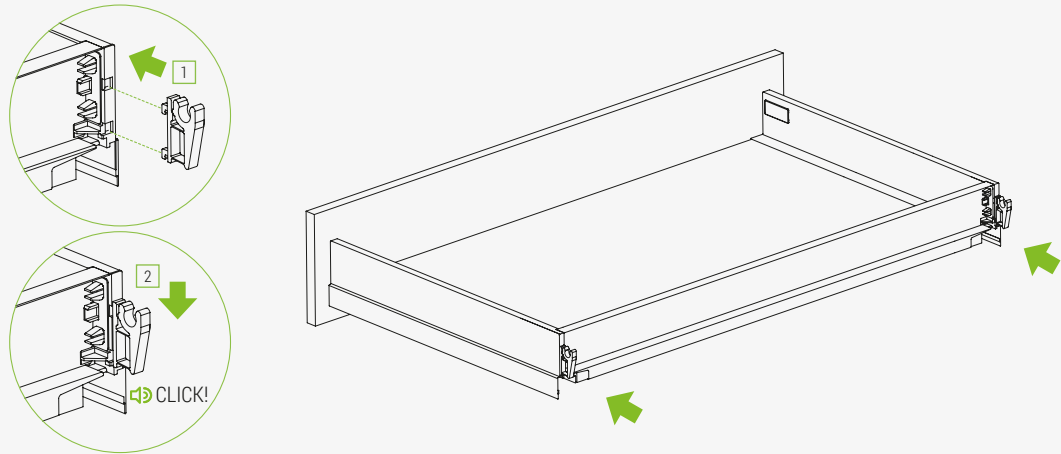
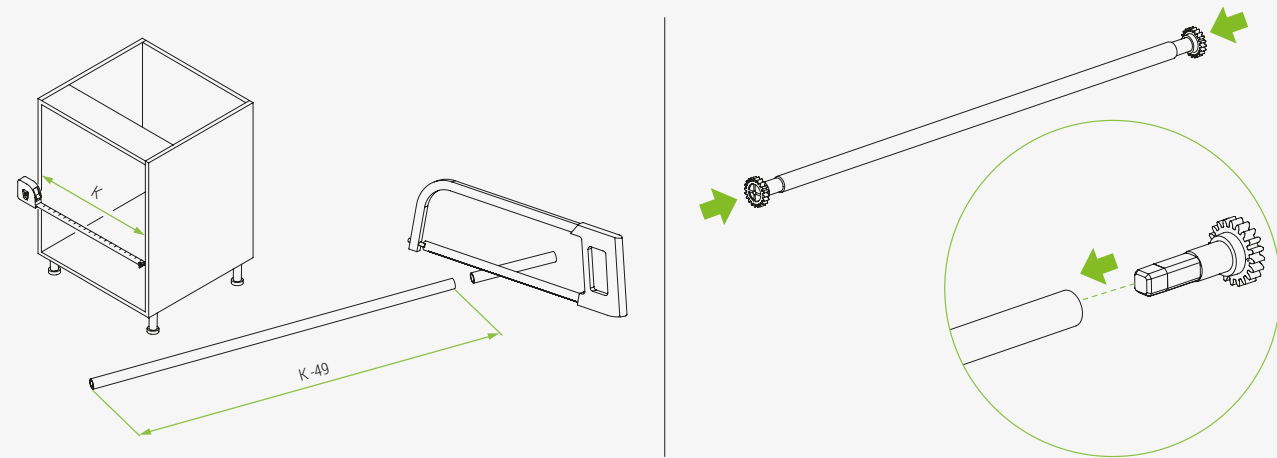
Drawer H120



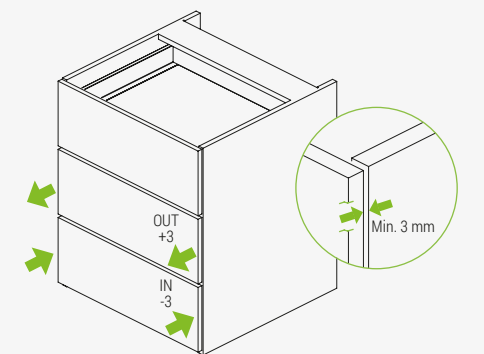
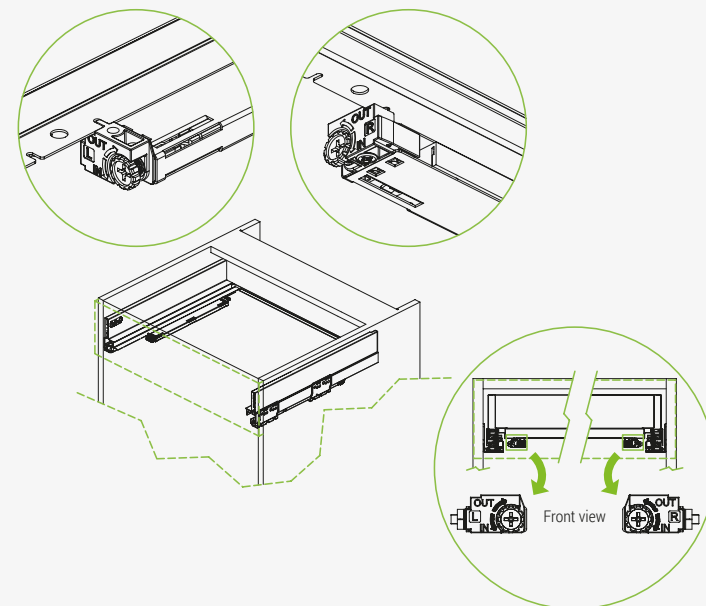
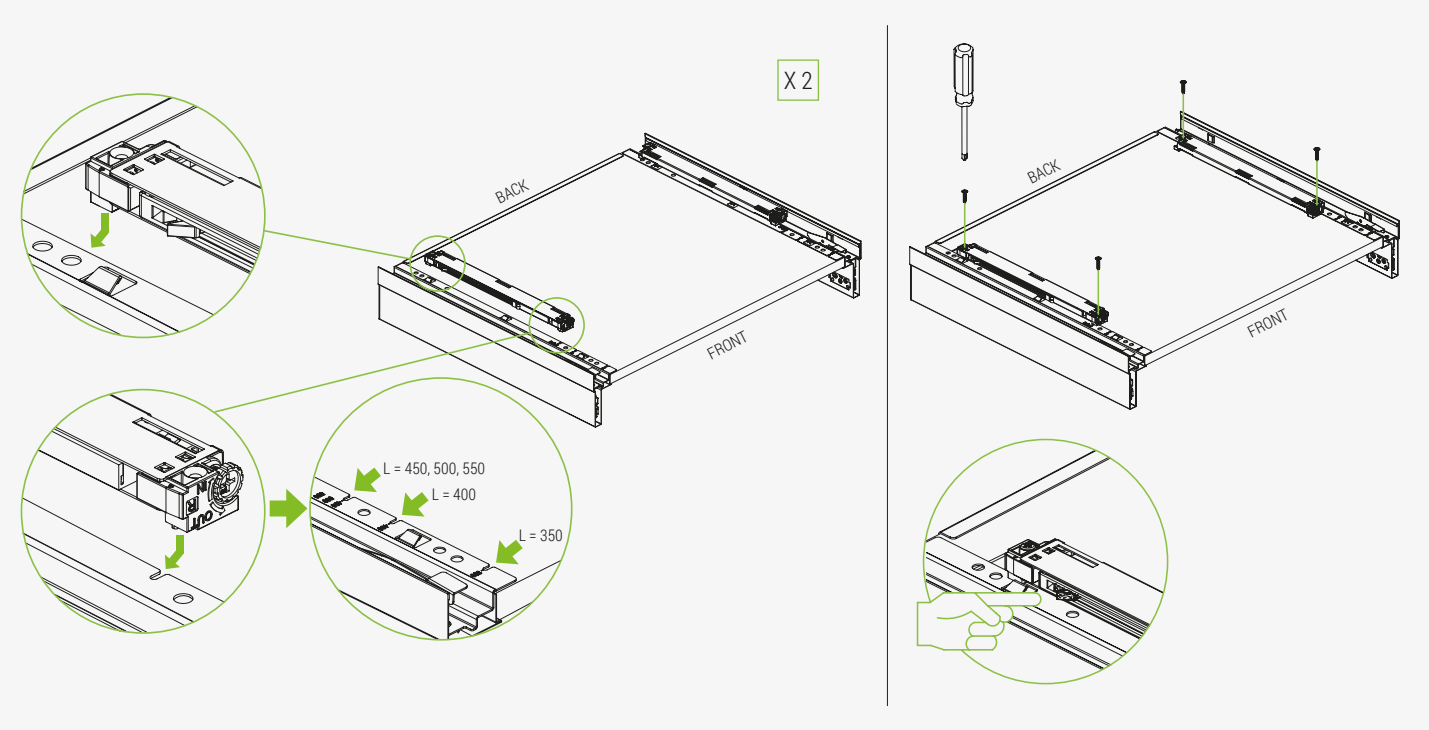
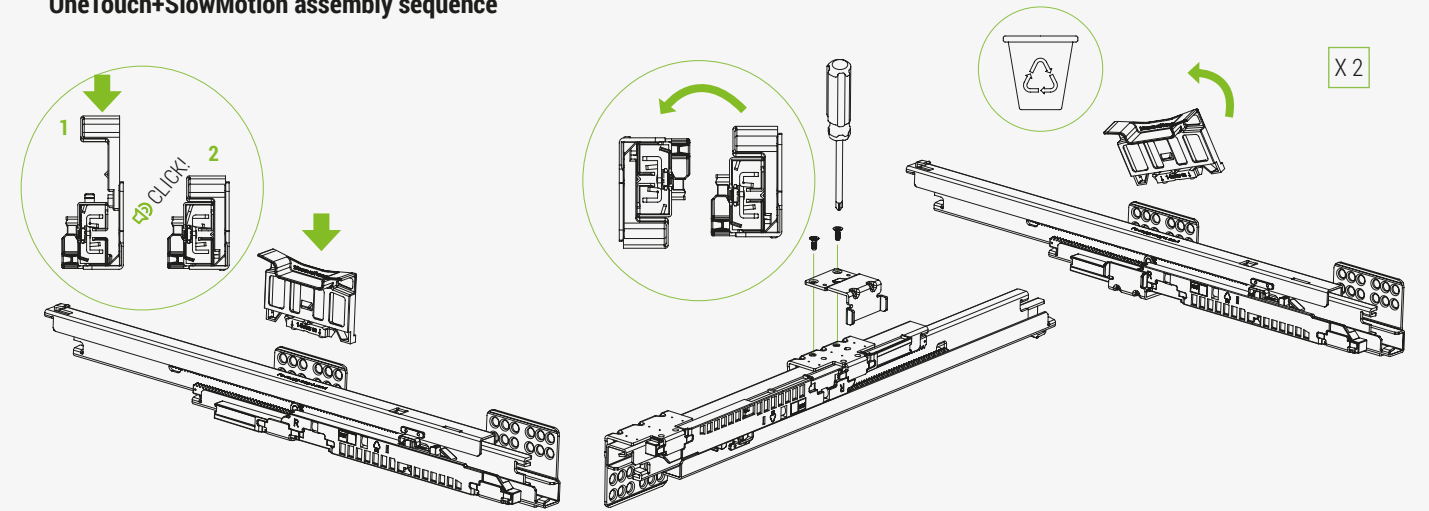
Drawer H180



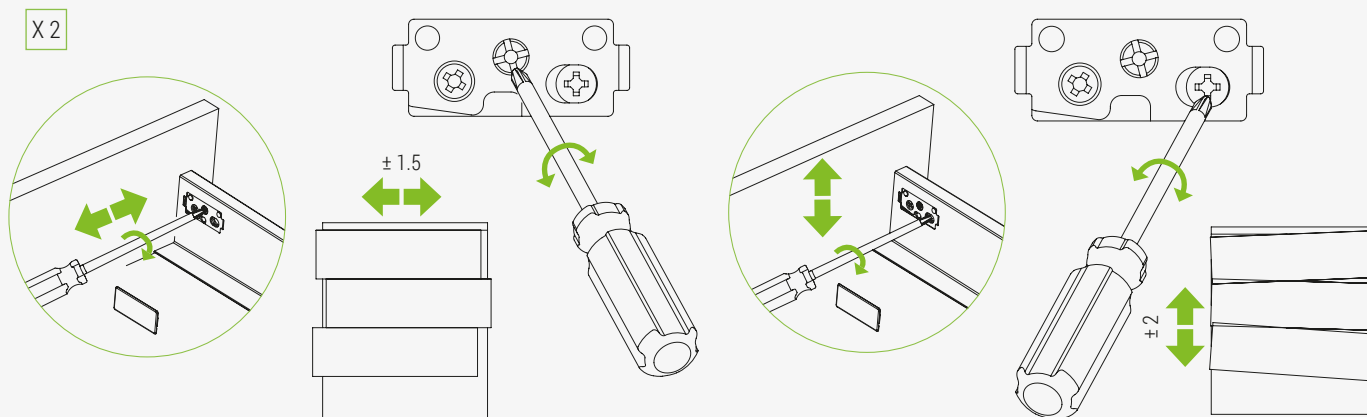
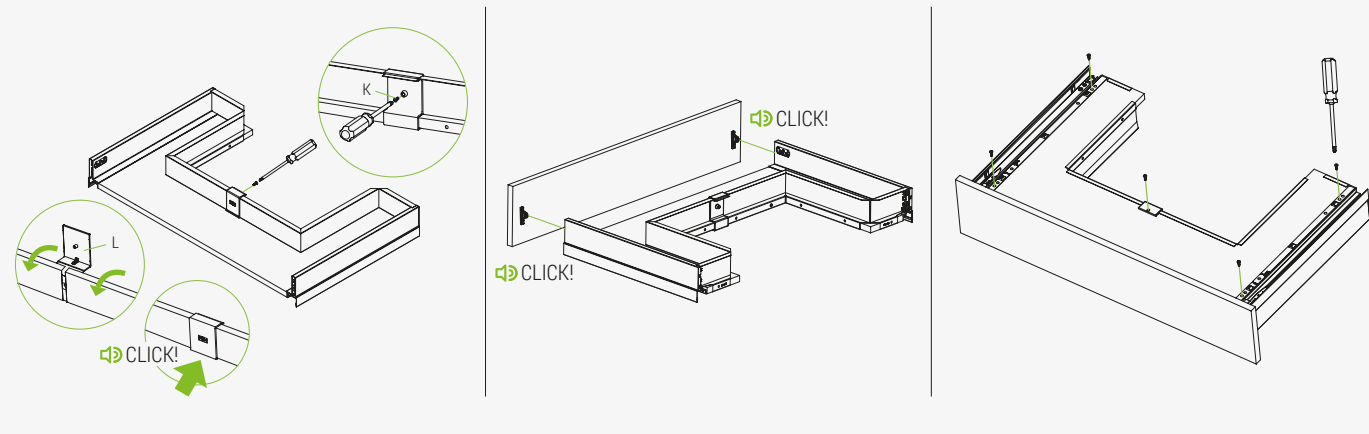
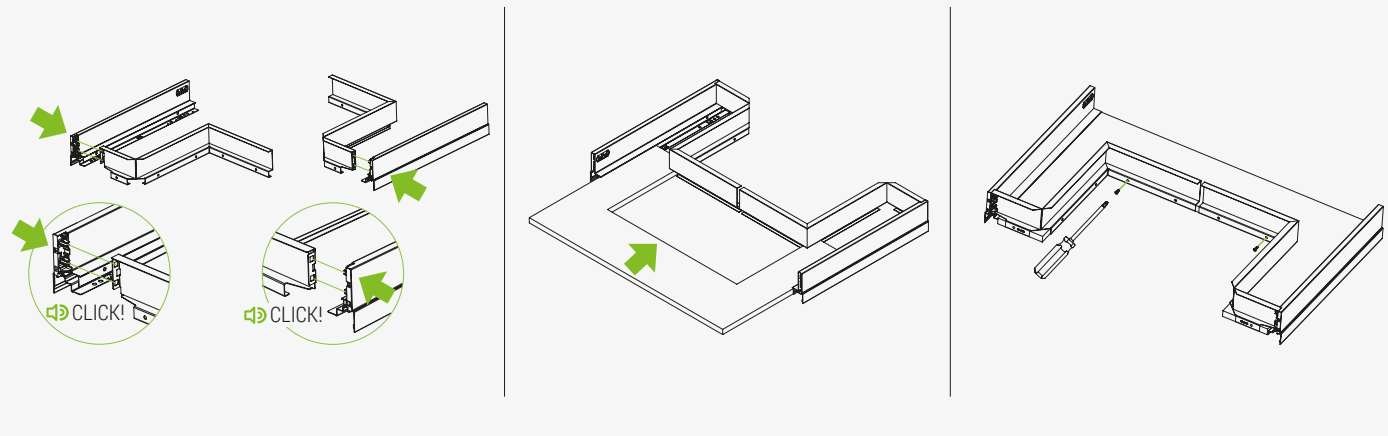
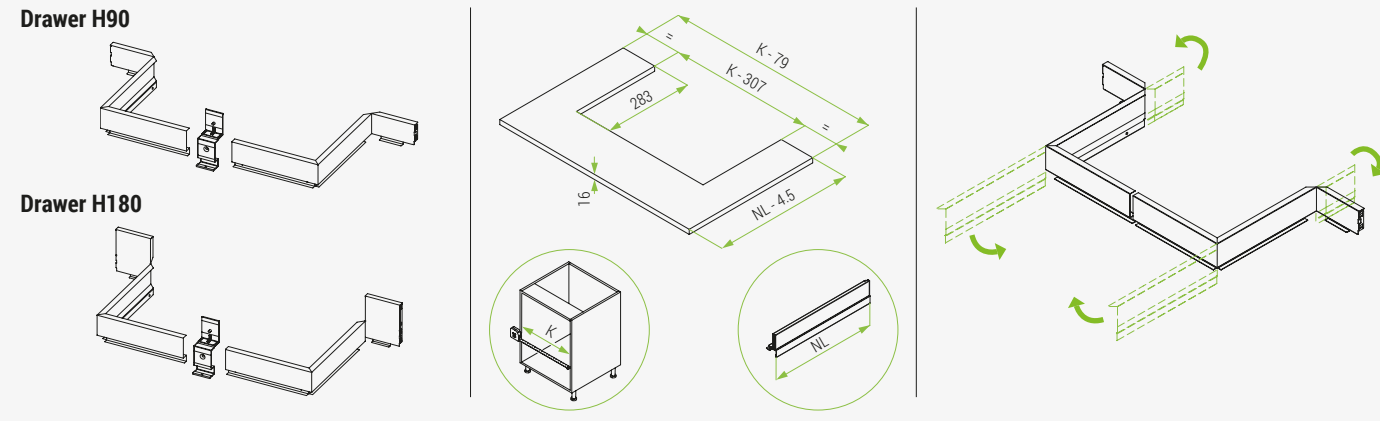
Stabilizer Kit assembly sequence



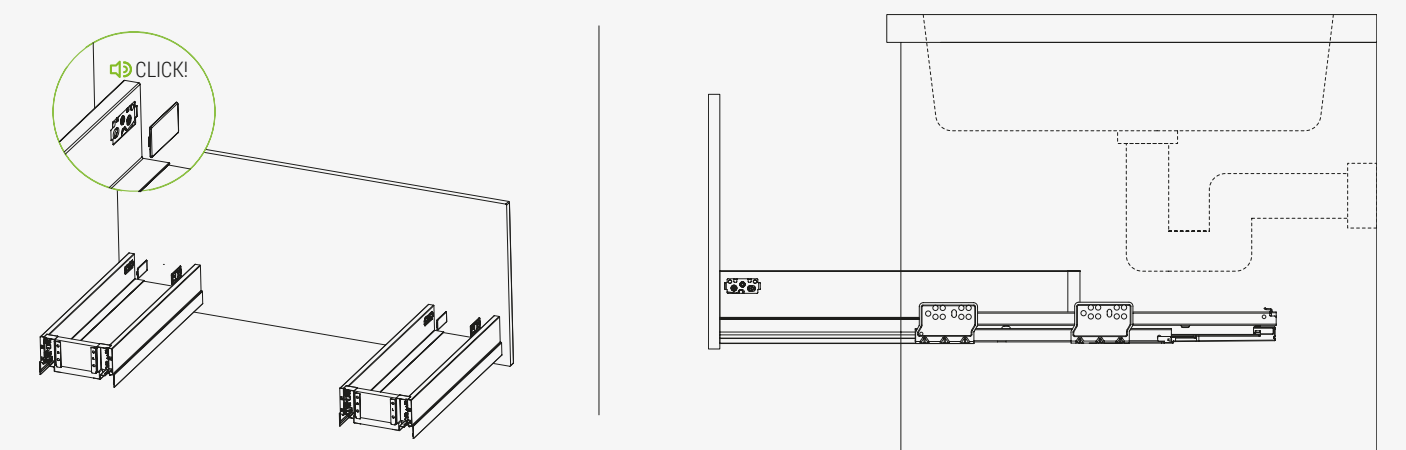
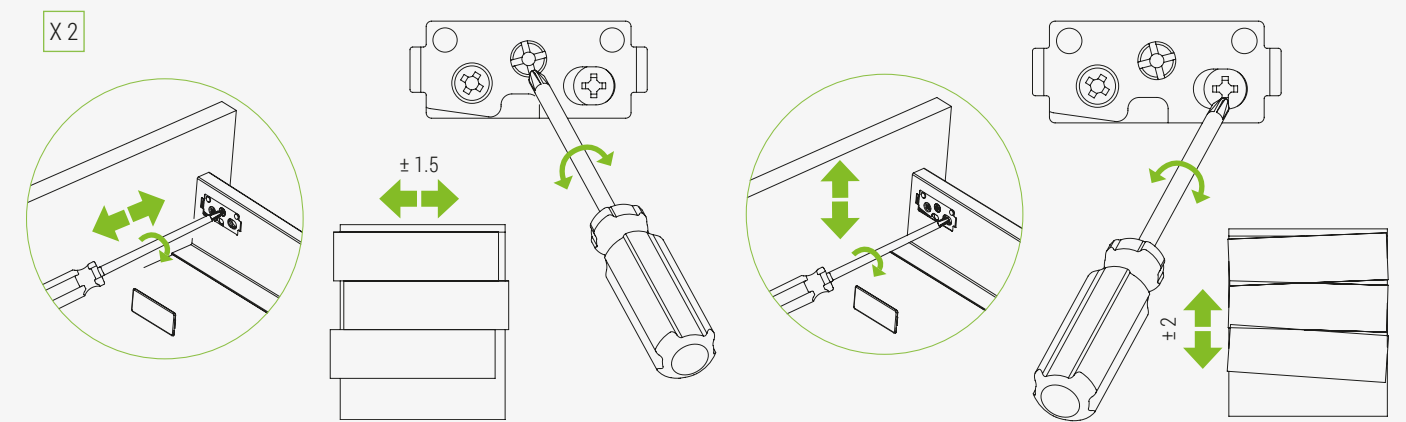
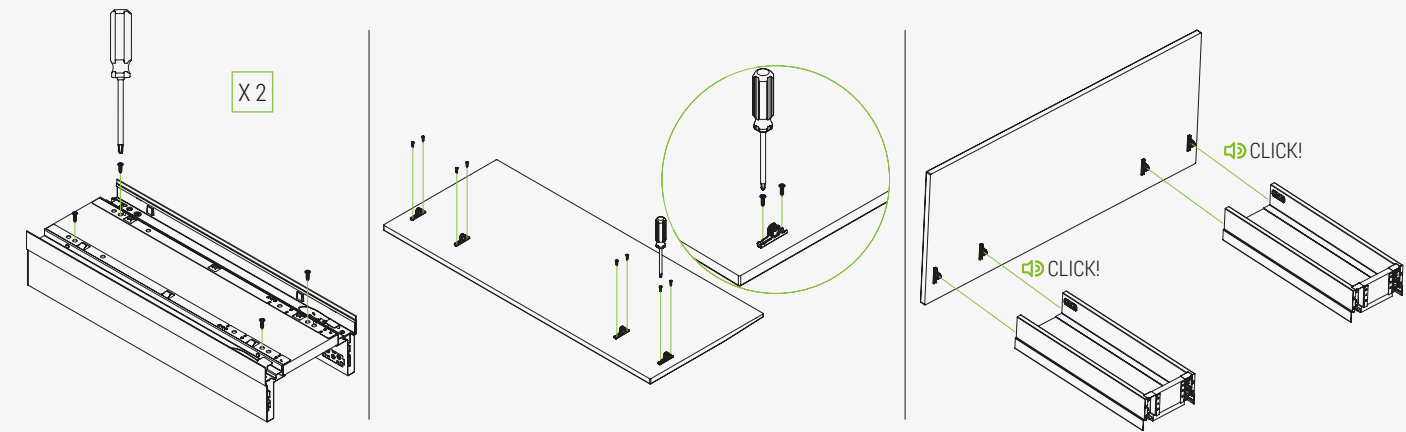
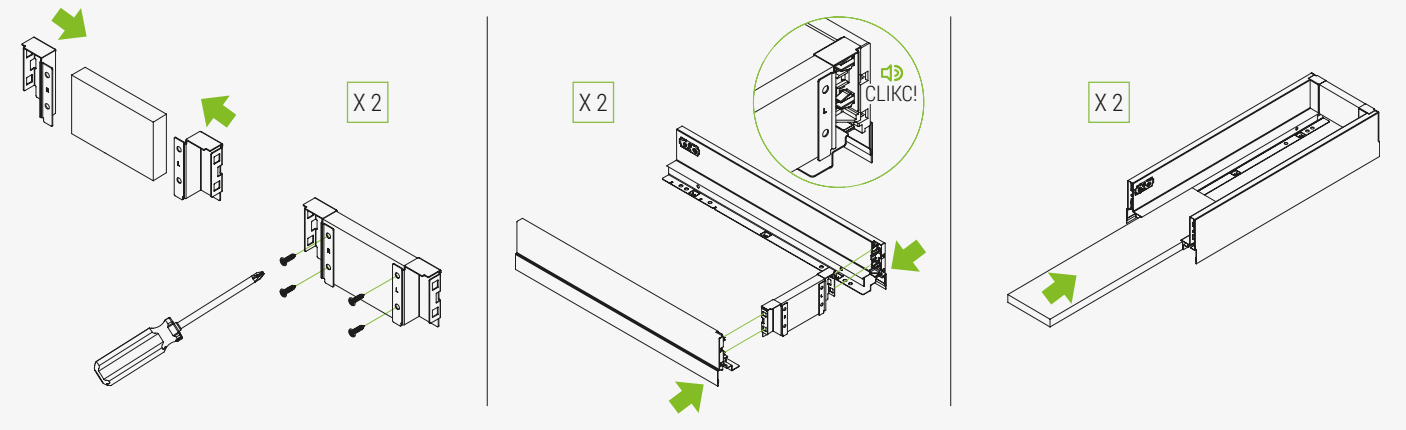
OneTouch+SlowMotion assembly sequence

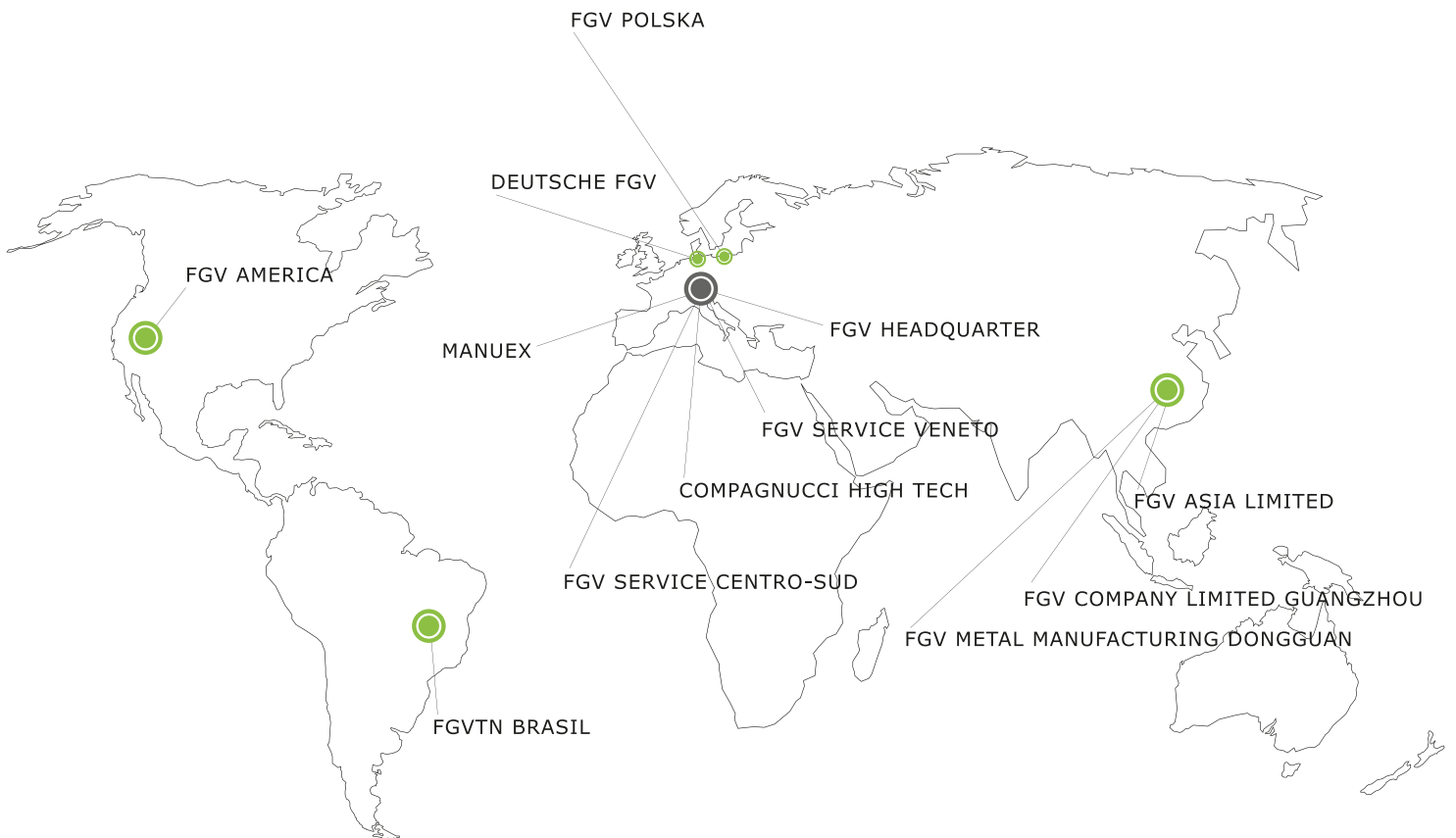


Acquario undersink assembly sequence



Kit undersink assembly sequence





DISCOVER FGV WORLD



FORMENTI & GIOVENZANA S.P.A.
Via Concordia, 16 - 20837 Veduggio con Colzano (MB) - Italy
T. +39 (0)362 9471 - F. +39 (0)362 998788 - info@fgv.it - www.fgv.it