



Plastic Hardware Specialists
Cabinet Master[®] Plastic Hardware

Bainbridge Manufacturing, Inc.

Since 1960

2024

www.bainbridgemfg.com

237 W. 3rd Street • PO Box 487 • Waterville, WA 98858
(509) 745-9555 • 1-800-255-4702 • Fax (509) 745-9666



1. Table of Contents
2. Terms and Conditions
3. BHMA/ANSI items list
4. **New Products**
5. False Front Clips
6. Counter, Desk, Finishing Grommets
7. Corner Braces and Brackets
8. Drawer Slide Spacers
9. Shelf Supports
10. Drawer Bumpers
11. Ventilation Grills
12. Drawer Slide Sockets
13. Shelf Hold Down Clips
14. Hinge, Catch and Lock Spacers
15. Glass and Door Panel Clips
16. Mirror and Screen Clips
17. Door Clips
18. Drawer Stops and Latches
19. Corner Protectors
20. Slide Glides
21. Caps and Covers
22. Finishing Plugs
23. Closet Rod Pole Sockets
24. Vertical Divider Clips
25. Backplates & Glides
26. Drawer Pulls
27. Miscellaneous items



Bainbridge Manufacturing, Inc.

Plastic Hardware Specialists | *Cabinet Master® Plastic Hardware*

PO Box 487, 237 W. 3rd Street Waterville, WA 98858

1-509-745-9555 | info@bainbridgemfg.com

www.bainbridgemfg.com

Terms & Conditions

Terms of Payment

Hardware Products -1% -10 days from date of invoice/Net 30 days, unless otherwise negotiated with our US office.

Rush Orders-shipped same day order is received. There is a \$25.00 surcharge for this service.

Finance Charge - 1.5%/month on delinquent charges.

International Shipments - must be prepaid unless otherwise approved by Bainbridge Manufacturing, Inc. (BMI)'s U.S. Office.

Credit

Credit approval by our credit department is required for open account terms. Allow 10 to 15 days. Pending approval, domestic orders can be shipped by C.O.D. or can be prepaid by credit card. We accept Master Card, Visa, Discover, and American Express.

C.O.D. Shipments

COD shipments are available through UPS only. COD charges are billed collect. Orders shipped to customers who are not on an open account basis can be C.O.D. or prepayment can be made by credit card. We accept Master Card, Visa, Discover, and American Express.

Set-Up Charges and Color Charges

Standard mold set-up cost for custom molding in \$200.00 per run. BMI color change charge: \$250.00

Customs, Duties and Import/Export Documentation

Unless otherwise agreed to by BMI's U.S. Office, the buyer shall bear all risk and expense of obtaining any documents by the country of delivery and/or origin for the purpose of exportation and/or importation (and where necessary for passage in transit through another country) including the cost of certificates of origin, export license and consular fees. The buyer shall also bear all costs and expense of any custom duties and taxes that may be levied by reason of export or import or in transit.

Insurance

Unless otherwise agreed to by BMI's U.S. Office, the buyer shall be responsible for procuring, at its own cost, insurance coverage against the risk of carriage of the goods and for coverage of any special risks against which the buyer requires coverage.



Bainbridge Manufacturing, Inc.

Plastic Hardware Specialists | *Cabinet Master® Plastic Hardware*

PO Box 487, 237 W. 3rd Street Waterville, WA 98858

1-509-745-9555 | info@bainbridgemfg.com

www.bainbridgemfg.com

Terms & Conditions

Return Merchandise

No merchandise may be returned without prior authorization. Return goods are subject to restocking charges. Special order (non-catalog) items are non-returnable under any circumstances. We do not accept returns of merchandise purchased prior to one(1) year from date of shipment. Please call 509-745-9555 for returns and RGA information.

Delivery Shortages

All claims for shortage must be filed within 30 days after invoice date for the merchandise.

Prices

Prices are subject to change without prior notice. All special quotation prices are good for 30 days unless otherwise noted. All invoicing and quotations for costs, pricing and shipping charges relating to Bainbridge Manufacturing, Inc. are always U.S. currency.

Office Hours

7:00 a.m. to 4:00 p.m. PST Monday - Friday

CLOSED SATURDAYS AND SUNDAYS

Exceptions

Exceptions to the General Policies outlines above may be negotiated on a case-by-case basis.

LIMITED PRODUCT WARRANTY

All parts sold by BMI are warranted to be free of defects in material or workmanship under normal use and service for a period of (1) year from date of shipment. If the product should fail under normal use and service because of such defect, we will replace it with a new one at no charge, provided the original is returned to our factory for inspection, transportation prepaid within (30) days after the defect is discovered. Our liability under this warranty is expressly limited to replacement of the product without charge, and in no event shall we be liable in any way for consequential, special or incidental damages.

**WE MAKE NO OTHER WARRANTIES, EXPRESSED
OR IMPLIED, INCLUDING IMPLIED WARRANTIES OR
MERCHANT-ABILITY AND FITNESS FOR A
PARTICULAR PURPOSE.**



The following items have had the listed tests performed and have passed. The actual data is available by request from Bainbridge Mfg., Inc. 509-745-9555

Shelf Rests (Shelf Supports)

ANSI/BHMA A156 Section 4.8.2, Test 7, Grade 1

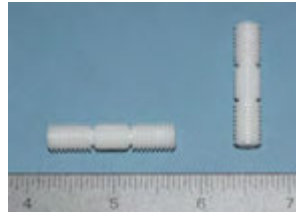
- #32201— two 5mm pins , 3/4” and 1” shelf
- #3206 — two 5mm pins , 3/4” and 1” shelf with screw hole
- #3227 —two 5mm pins for 3/4” shelf
- #3228 —two 5mm pins for 1” shelf
- #3267—two 5mm pegs for 3/4” shelf
- #3250 — 5mm peg X 1/2 shelf
- #3248 — 5mm peg X 1/2 shelf
- #3233 —5mm peg X 5/8 shelf
- #3200 —5mm peg X 3/4 shelf
- #3253 —5mm peg X 3/4 shelf
- #3226 —5mm peg X 3/4 shelf
- #3232 —1/4 peg X 1/2 shelf
- #3249 —1/4 peg X 1/2 shelf
- #3202 —1/4 peg X 1/2 shelf
- #3246 —1/4 peg X 5/8 shelf
- #3201 —1/4 peg X 3/4 shelf
- #3244 —1/4 peg X 3/4 shelf

BHMA CERTIFIED

- #32201—32201— two 5mm pins , 3/4” and 1” shelf



#1996 Dowel Pin
SUPER GRIP
8mm diameter
Nylon 1-1/2" long



#32691 Vanity
5mm peg .300 long
5/8" Shelf
Multiple colors



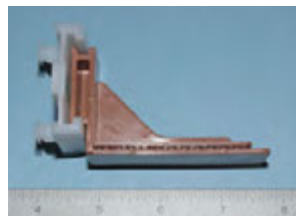
#6018 Rear Socket
Adjustable Under
Mount (8mm pegs)



#1623 Corner Brace
Reversible for easy
install—labor saving
2-1/2" x 2-1/2" x 3/4"



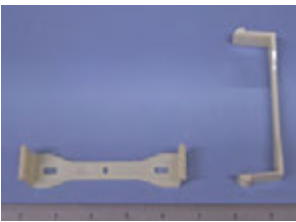
#6019 Rear Socket
Adjustable Under
Mount (8mm pegs)



#1718 Triceratops
HUGE 7" Long Rubber
Drawer Pull
Pegs 3" apart
Multiple colors



**#4321 False Front
Clip**
4" Opening
7/8" Face Frame
Screw in place



#1719 Long Neck
HUGE 11" Long
Rubber Drawer Pull
Pegs 3" apart
Multiple colors



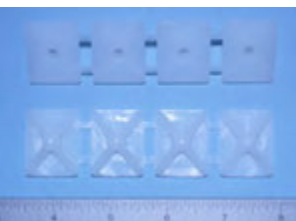
#4505 Vent Grill
2-5/8" X 8-21/32"
1/4 deep walls
Added MAPLE



#1723 Tyrannosaurus
HUGE 7-1/2" Long
Rubber Drawer Pull
Pegs 3" apart
Multiple colors



#5407 Slide Glide
1" X 1-1/8"
Strip of 4—break off
after stapling in place



#1726 Pterodactyl
HUGE 11-1/2" Long
Rubber Drawer Pull
Pegs 3" apart
Multiple colors

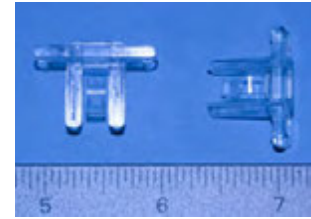




#1724 Velociraptor
HUGE 8" Long Rubber
Drawer Pull
Peg 3" apart
Multiple colors



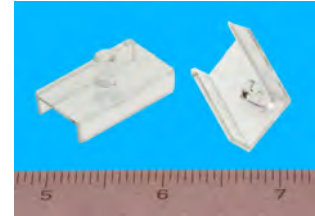
#4214 Divider Clip
7mm panel 3/4" long
(1/8" saw slot tab)
multiple colors



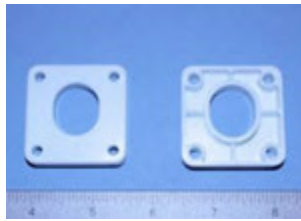
#1725 Stegosaurus
HUGE 11-1/2" Long
Rubber Drawer Pull
Pegs 3" apart
Multiple colors



#4215 Divider Clip
1/4" diam .295 long peg
Holds 1/2" thick board
Multiple colors



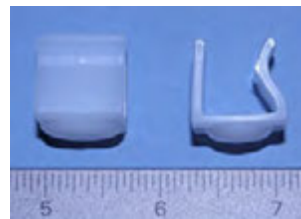
#3521 Lock Spacer
1-11/16 X 1-11/16
3/8" thick
3/4 X 7/8 oblong hole
White



#3018 End Cap
1-1/4" X 3/4"
Multiple colors



#54021 Slide Glide
snap on to a 12mm
cabinet sidewall to slide
cabinet in shop



**#18152 Vanity Shelf
Support**
5mm peg
300 long peg
Multiple colors



#1727 Pleisosaur
HUGE 11" Long Rub-
ber Drawer Pull
Pegs 3" apart
Multiple colors



#3303 Door Clip
3/4 X 21/32 X 21/32



#4213 Divider Clip
7mm panel 2-3/8" long
(1/8" saw slot tab)
multiple colors



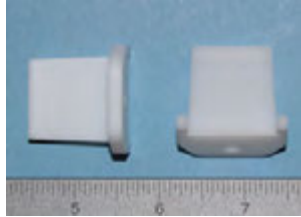
#3302 Door Clip
3/4 X 3/4 X 1-23/64





#4312 False Front Clip

Fits 3/4" face frame
Install with screws



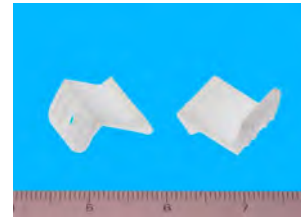
#4302 False Front Block

3/4" thick
4" high opening



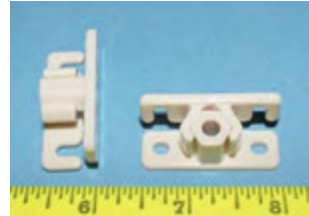
#4308 False Front Clip

Fits 3/4" face frame
Install with screws



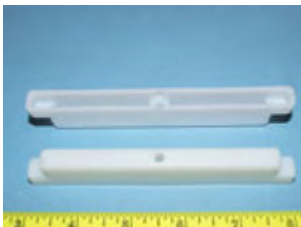
#4303/#4304 False Front Clip

2 piece
Screw into place



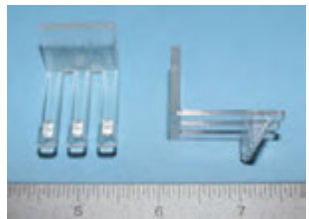
#4306 False Front Block

1/2" thick face frame
4-1/2" high opening



#4311 False Front Clip

Attach with staples
3/4" face frame with rubber bumpers.



#4300 False Front Block

3/4" thick
4-1/2" high opening



#4301 False Front Block

13/16" thick
4-1/2" high opening



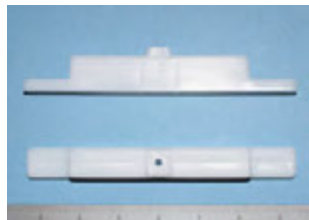
#4307 False Front Block

5/8" thick
5" high opening



#4313 False Front Block

3/4" Thick
4-1/2" high opening



#4305 False Front Clip

Attach with staples
3/4" face frame.



#4319 False Front Clip

5-1/4" opening
2.5mm bumper
3/4 Face Frame
Screw in place





False Front Attachments

#4316
False Front Clip
4-1/2" opening
3/4" face frame 3mm bumper



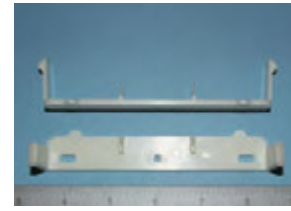
#4314
False Front Clip
4-1/2" opening
3/4" face frame
no bumper



#4315
False Front Clip
5" opening
3/4" face frame
no bumper



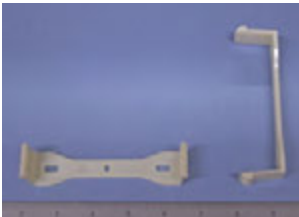
#4320 False Front Clip
5" opening
2mm bumper
3/4 Face Frame
Screw in place



#4317 False Front Clip
5" opening
1/8" bumper
3/4 Face Frame
Screw in place



#4321 False Front Clip
4" Opening
1/4" Face Frame
Screw in place





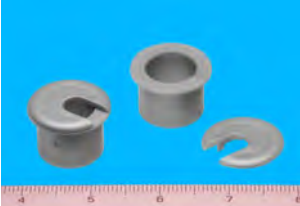
#1040 Grommet
Fits 4" drilled hole
Removable lid
Multiple colors



#1031
Cord Grommet
2-1/2" hole 5/8 deep
Multiple colors



#1041
Cord Grommet
1" hole 5/8 deep
Multiple colors



#1038
Cord Grommet
2-3/8" hole
Multiple colors



#1043
Cord Grommet
3" hole
Multiple colors



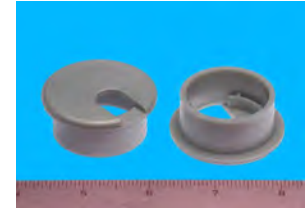
#1035
Cord Grommet
2" hole
Multiple colors



#1039
Cord Grommet
1-3/4" hole
Multiple colors



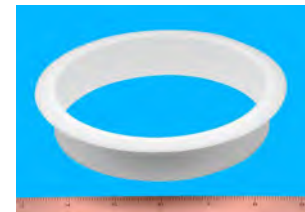
#1037
Cord Grommet
1-1/2" hole
Multiple colors



#1108
Finishing Grommet
3/4" hole
Multiple colors



#1047
Trash Ring
5" hole 1" deep
Multiple colors



#1044
Trash Ring
6" hole 1" deep
Multiple colors

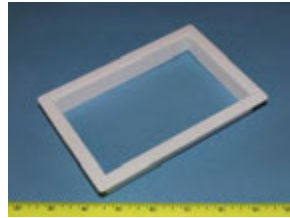


#1104
Finishing Grommet
10-3/8" X 1-1/4"
3/4" deep
Multiple colors





#1110 Single Outlet
Access Grommet
5-13/16 X 3-13/16
Multiple colors



#1109
Finishing Grommet
5" X 12"
1" deep
Multiple colors



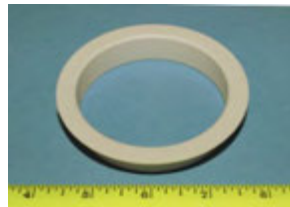
#1034 Double Outlet
Access Grommet
5-1/2" X 5-13/16"
Multiple colors



#1103
Finishing Grommet
4-11/16" X 8-1/8"
Multiple colors



#1107
Finishing Grommet
3" hole
Multiple colors



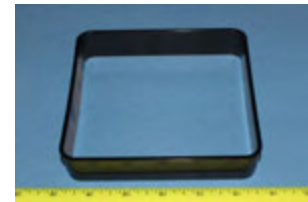
#1106
Finishing Grommet
6-1/4" X 2-3/16"
3/4" deep
Multiple colors



#1050
Finishing Grommet
1-3/4 hole
Multiple colors



#1101
Finishing Grommet
5-1/2" X 5-1/2"
Multiple colors



#1100
Finishing Grommet
4" X 1-1/4"
Multiple colors



#1102
Finishing Grommet
2-5/16 X 3-1/2"
1-1/6" deep

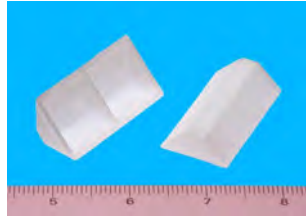


#1105
Finishing Grommet
6-1/4" X 2-3/16"
Multiple colors





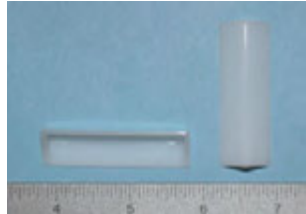
#1602
Center rib for strength
3/4" X 3/4" X 2"
Staple in place



#1616
Adjustable with slots
Screw in place
1-1/4" X 1-1/4"
1/8" thick
Multiple colors



#1615
For tight applications
1/2" X 1/2" X 2"
Staple in place



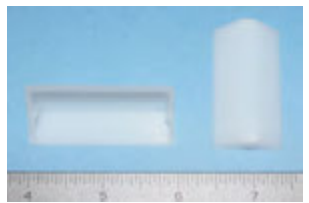
#1619
Corner Brace
4" X 1" X 1"
Natural Color
Staple in place



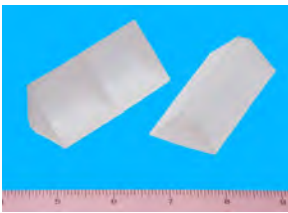
1623 Corner Brace
Reversible for easy
install—labor saving
2-1/2" x 2-1/2" x 3/4"



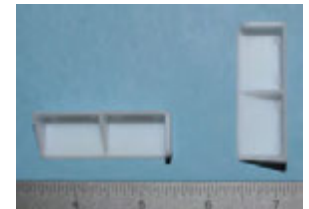
#1609
3/4 X 3/4 X 2
East staple gun access
no center rib
Staple in place



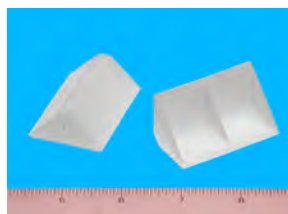
#1603
1" X 1" X 3"
Staple in place



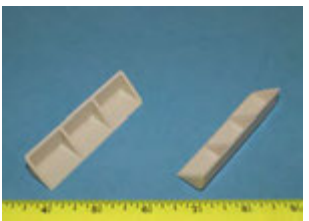
#1614
2" X 3/4" X 3/4" with
added tab for additional
stapling on one end
Staple in place



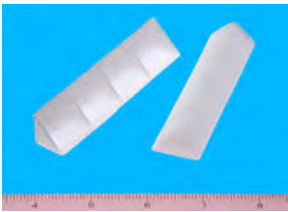
#1657
1" X 1" X 2"
Staple in place



#1604
9/16 X 9/16 X 3
Multiple colors
Staple in place



#1605
5/8" X 5/8" X 4"
Staple in place

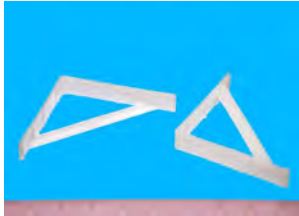


#1699
3/4" X 3/4" X 3-1/2"
Multiple colors
Screw in place

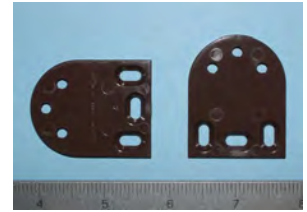




#1667
4" X 4" X 5/8"
Kick Panel



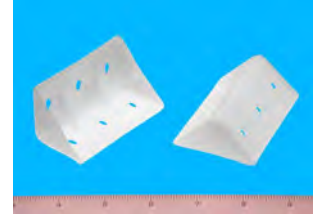
#1618
Flat Full Overlay Brace
1-7/8" X 1-1/2"
Multiple colors



#1682
3/4" X 3/4" X 1"
Screw in place



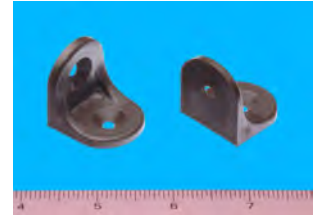
#1683
1-1/2" X 1-1/2" X 3"
Screw in place



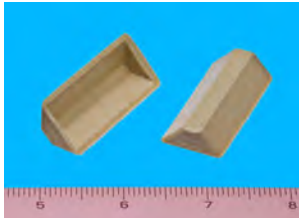
#1684
3/4" X 3/4" X 2-3/4"
Multiple colors
Staple in place



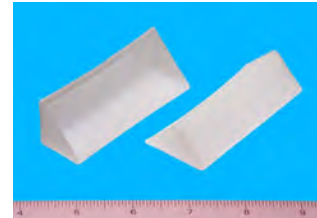
#1685
1-1/8" X 1-1/8"
Multiple colors
Screw in place



#1689
5/8" X 5/8" X 1-7/8"
Multiple colors
Staple in place



#1692
1" X 1" 3-1/4"
Staple in place



#1610
2-1/2 X 2-1/2 X 3/4
Staple in place



#1698
3/4" X 3/4" X 2"
Multiple colors
Screw in place



#1652
3/4" X 3/4" X 6"
Multiple colors
Screw in place

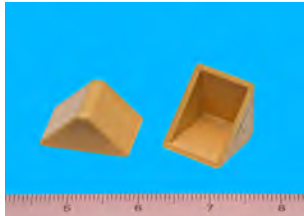


#1659
3" X 3" X 7/8"
Staple in place
Multiple colors

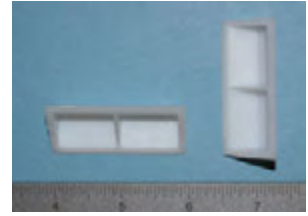




#1664 Brace
1" X 1" X 1"
Multiple colors



#1613 Brace
Heavy Duty
3/4" X 3/4" X 2"



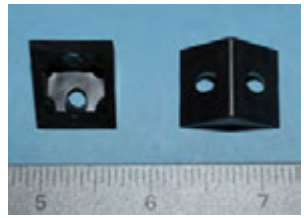
#1608 Brace
2-1/2 X 2-1/2 X 3/4
NO alignment tabs



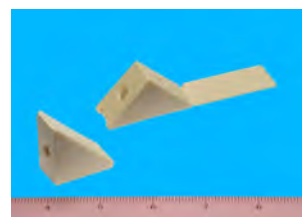
#1665 Heavy Duty Brace
3" X 3" X 7/8"
Install using screw holes



#1612 Brace
Small Corner Brace
3/4 X 3/4
Multiple colors



#1655 Brace
1-3/4" X 1-3/4"
Folding lid
Multiple colors



#1621 Corner Brace
2-1/2" X 2-1/2" X 3/4"



#1622 Corner Brace
Alignment tab
2-1/2 X 2-1/2 X 3/4



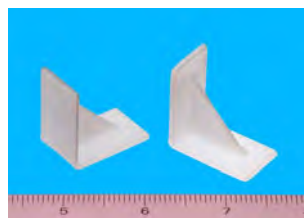
#1654 Brace
3/4" X 3/4" X 9-1/2"
Multiple colors



#1611
Small Corner Brace
3/4 X 3/4 X 3/8
Lead in for drawers
Screw in place



#1680 Staple Brace
1-1/4" X 1-1/4" X 3/4"
Staple in place
Multiple colors



#1620 Corner Brace
Alignment tab
2-1/4 X 2-1/4 X 3/4





Bainbridge Manufacturing, Inc.

Plastic Hardware Specialists | Cabinet Master® Plastic Hardware

PO Box 487, 237 W. 3rd Street Waterville, WA 98858

1-509-745-9555 | info@bainbridgemfg.com

www.bainbridgemfg.com

Braces

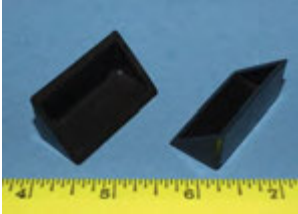
#1607 Corner Brace

45 degree
Multiple Colors



#1606 Corner Brace

3/4" X 3/4" X 1-3/4"
Staple in place
BK





Drawer Slide Spacers

#3616 Slide Spacer

1" thick
holes 64mm apart
5mm peg
Multiple colors



#3691 Spacer

Grass Soft close
1/4" thick
5mm peg
Multiple colors



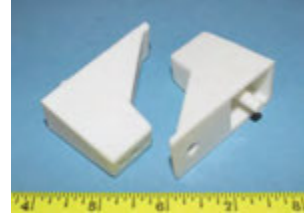
#3684 Slide Spacer

3/8" offset
5mm peg
Multiple colors



#3603 Slide Spacer

1-7/16" offset
5mm peg
Multiple colors



#3683 Slide Spacer

5/8" offset
5mm peg & .200" holes
Multiple colors



#3693 Spacer

Full extension
1" offset, 5mm peg,
64mm hole to hole



#36021 Slide Spacer

1" thick
5mm peg
Multiple colors



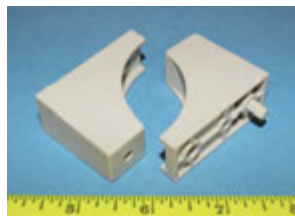
#3694 Spacer

Full extension
1.25" offset, 5mm peg,
64mm hole to hole



#36441 Slide Spacer

1-1/2" thick
5mm peg
Multiple colors



#3613 Slide Spacer

2-3/16" thick
5mm peg
Multiple colors



#3686 Slide Spacer

1-1/2" offset
5mm peg & .200" holes
Multiple colors



#3689 Spacer

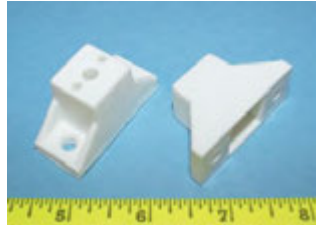
3/4" offset
single small hole .110"
Multiple colors





Drawer Slide Spacers

#3602 Slide Spacer
1" Thick,
.190" Holes 32mm apart
Multiple colors



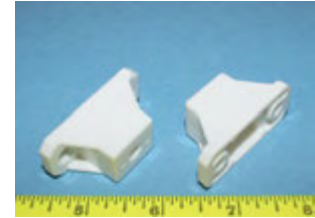
#3682 Slide Spacer
3/4" Thick,
1/4" Holes 32mm apart
Multiple colors



#36261 Slide Spacer
5/8" Thick
5mm peg
Multiple colors



#36071 Slide Spacer
7/8 thick
.205" holes 32mm
apart
Multiple colors



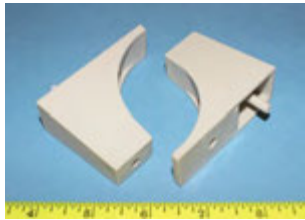
#36011 Slide Spacer
3/4" Thick
5mm peg
Multiple colors



#3627 Slide Spacer
1" thick
5mm peg
Multiple colors



#3636 Slide Spacer
2" thick
5mm peg
One attachment hole
Multiple colors



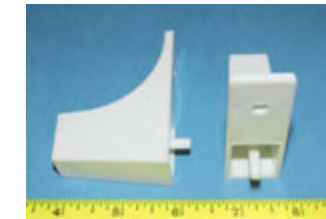
#3673 Slide Spacer
3/4 Thick
5mm peg
Multiple colors



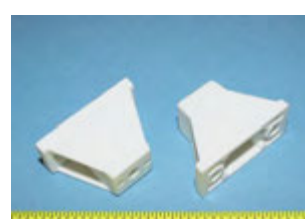
#3622 Slide Spacer
1-1/8" thick
5mm peg
Multiple colors



#3620 Slide Spacer
2" thick
5mm peg
Multiple colors



#3604 Slide Spacer
1-1/4" Thick
1/4" holes 32mm apart
Multiple colors



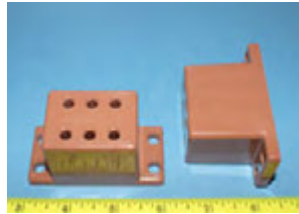
#3623 Slide Spacer
2" thick
5mm peg
Two attachment holes
Multiple colors





Drawer Slide Spacers

#3639 Slide Spacer
1-3/4" Thick
Multiple colors



#3652 Slide Spacer
5/8" Thick
Multiple colors



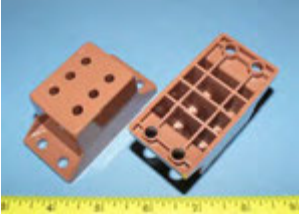
#3695 Slide Spacer
1" Thick
Multiple colors



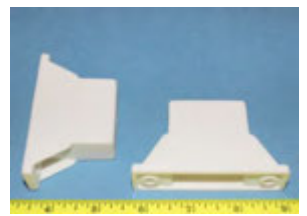
#3692 Slide Spacer
1-1/4" Thick
Multiple colors



#3643 Slide Spacer
1-1/2" Thick
Multiple colors



#3630 Slide Spacer
1-7/8" thick
Holes 64mm apart
no peg
Multiple colors



#3669 Slide Spacer
1-1/4" thick
holes 64mm apart
5mm peg
Multiple colors



#36161 Slide Spacer
1" thick ,
holes 64mm apart
no peg
Multiple colors



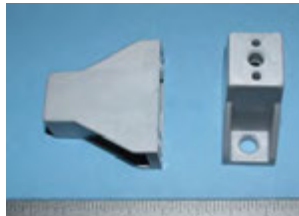
#3615 Slide Spacer
42mm thick ,
holes 64mm apart
5mm peg
Multiple colors



#36241 Slide Spacer
1/4" holes 32mm apart
35 mm Thick attach
slide with euro screw
Multiple colors



#3631 Slide Spacer
1-3/4" Thick,
7mm Holes 32mm apart
Multiple colors



#3651 Slide Spacer
15mm thick
holes 32mm ctr. to ctr.
no peg Multiple colors





Drawer Slide Spacers

#3658 Slide Spacer
1/8" Thick,
1/4" Holes 32mm apart
Multiple colors



#36061 Slide Spacer
1/4" Thick
205" holes 32mm apart
Multiple colors



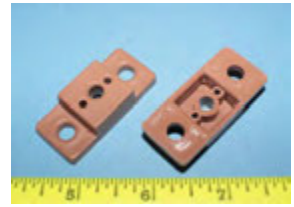
#3606 Slide Spacer
1/4" Thick,
1/4" Holes 32mm apart
Multiple colors



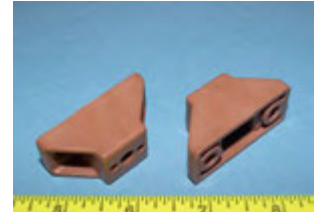
#3605 Slide Spacer
3/8" Thick,
1/4" Holes 32mm apart
Multiple colors



#3649 Slide Spacer
7/16" Thick,
1/4" Holes 32mm apart
Multiple colors



#3607 Slide Spacer
7/8"
.242" Holes 32mm
apart
Multiple colors



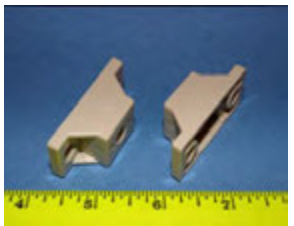
#3600 Slide Spacer
1/2" Thick,
1/4" Holes 32mm apart
Multiple colors



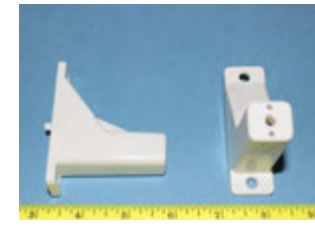
#3626 Slide Spacer
5/8" Thick,
1/4" Holes 32mm apart
Multiple colors



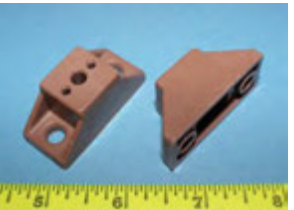
#3674 Spacer
11/16 Thick
1/4" Holes 32mm apart
Multiple colors



#3656 Slide Spacer
2-1/2" thick
5mm peg
Multiple colors



#3628 Slide Spacer
13/16" Thick,
1/4" Holes 32mm apart
Multiple colors



#3609 Slide Spacer
1-1/4" thick
5mm peg
Multiple colors





Drawer Slide Spacers

#3690 Slide Spacer
1-1/2" thick
5mm peg
lead in for easy screw start
Multiple colors



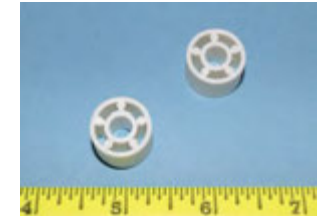
#3657 Slide Spacer
1" thick
screw hole at top
5mm peg
Multiple colors



#3624 Slide Spacer
1/4" holes 32mm apart
35 mm thick attach
slide with wood screw
Multiple colors



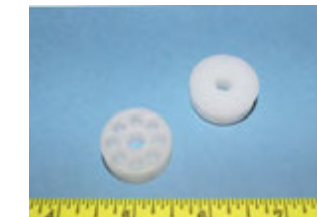
#3617 Round Spacer
1/2" thick
5/8" OD
1/4" ID
Multiple colors



#3675 Slide Spacer
1-1/2" Thick
1/4" Holes 32mm apart
Multiple colors



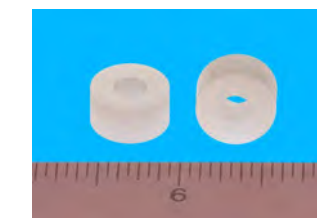
#3612 Round Spacer
1/4" thick
1" OD
1/4" ID
Multiple colors



#3632 Slide Spacer
1-5/8" Thick,
.245" Holes 32mm apart
Multiple colors



#3668 Round Spacer
1/4" thick
1/2" OD
3/16" ID.
White



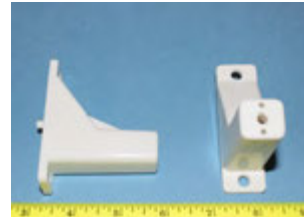
#3680 Slide Spacer
1" offset 5mm peg
Self aligning
Easy screw start
Multiple colors



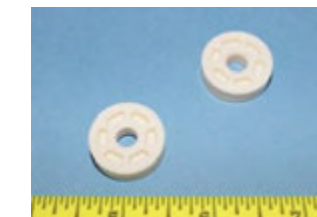
#3614 Round Spacer
1/2" thick
5/8" OD
1/8" ID
Multiple colors



#3656 Slide Spacer
2-1/2"
5mm peg
64mm between holes
Multiple colors



#3650 Round Spacer
7mm" thick
7/8" OD
Multiple colors





Bainbridge Manufacturing, Inc.

Plastic Hardware Specialists | *Cabinet Master® Plastic Hardware*

PO Box 487, 237 W. 3rd Street Waterville, WA 98858

1-509-745-9555 | info@bainbridgemfg.com

www.bainbridgemfg.com

Drawer Slide Spacers

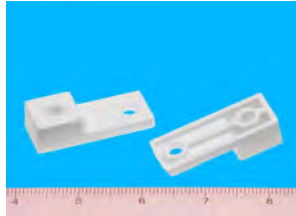
#3667 Slide Spacer

1/2" thick

1/4" diameter holes

spaced 1-1/4" ctr. to ctr.

Multiple colors



#3680 Slide Spacer

3/4" shelf 5mm pegs

Self aligning

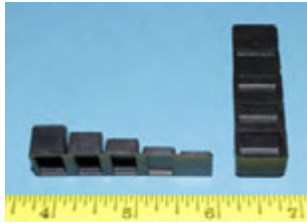
Easy screw start

Multiple colors



#3619 Step Spacer

Black or White

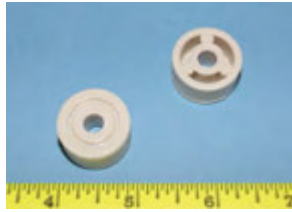




Drawer Slide Spacers

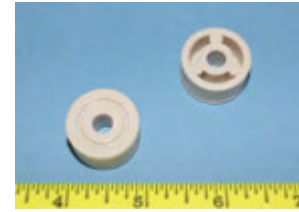
#3611 Round Spacer

1/2" thick
1" OD
1/4" ID
Multiple colors



#3610 Round Spacer

5/8" thick
1" OD
1/4" ID
Multiple colors



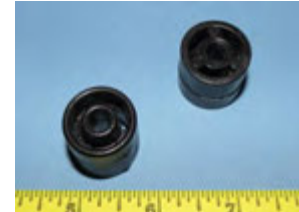
#3653 Round Spacer

11/16" thick
1-3/8" OD
1/4" ID



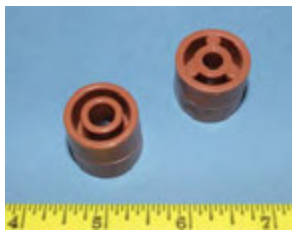
#3646 Round Spacer

3/4" thick
15/16" OD
1/4" ID
Multiple colors



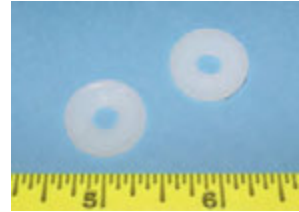
#3688 Round Spacer

7/8" thick
1" OD
1/4" ID
Multiple colors



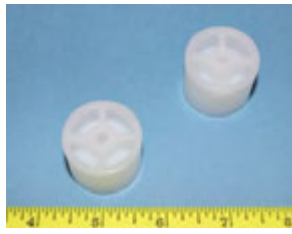
#3642 Round Spacer

1/16" thick
3/4" OD



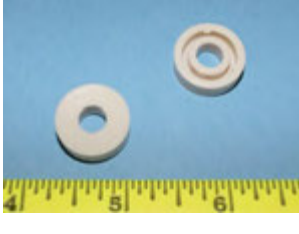
#3671 Round Spacer

1/8" ID
1" thick
1-1/8" O.D.



#3654 Round Spacer

1/4" thick
3/4" OD
7mm ID
Multiple colors



#3618 Round Spacer

1/8" thick
3/4" OD
1/4" ID



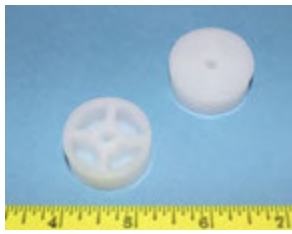
#3625 Round Spacer

3/8" thick
1" OD
1/4" ID
Multiple colors



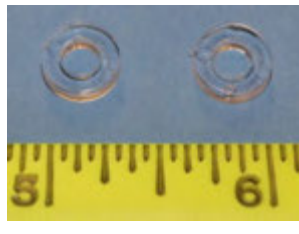
#3670 Round Spacer

1/8" ID
1/2" thick
1-1/8" O.D.



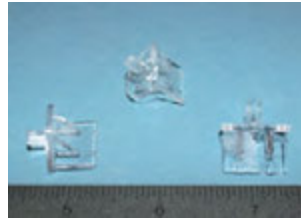
#3672 Round Spacer

3/16" ID
3/8" OD
1/8" thick
Clear





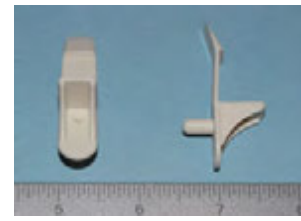
#3266 Vanity
Low Profile
5mm hex peg .290 long



#32231 Kitchen
5mm hex peg .300 long
5/8" Shelf



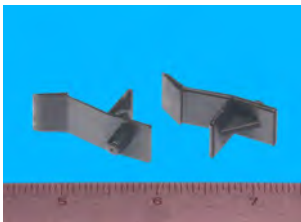
#3270 Vanity
5mm peg .375 long
3/4" Shelf
Multiple colors



#32231R / #32231L
Same as #32231
Handed
For short shelves



#3250 Vanity
5mm hex peg .255 long
1/2" Shelf
Multiple colors



#32201 Commercial
5mm hex pegs .290 long
32mm apart
3/4" OR 1" Shelf
BHMA CERTIFIED



#3222 Kitchen
Disappearing
5mm round .230 long
peg for 1/2" Shelf
Multiple colors



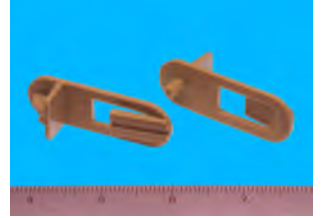
#3269 Vanity
5mm hex peg .380 long
5/8" Shelf
Multiple colors



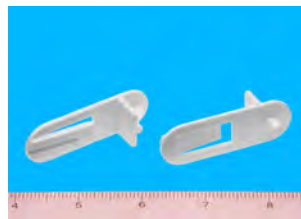
#3204 Kitchen
5mm hex Peg .300 long
for 1/2" Shelf
Horizontal snap lock



#3235 Kitchen
5mm hex peg .280 long
for 3/4" shelf
Multiple colors



#3237 Kitchen
5mm hex peg .290 long
for 1/2" shelf
Multiple colors



#3200 Kitchen
5mm hex peg .245 long
for 3/4"

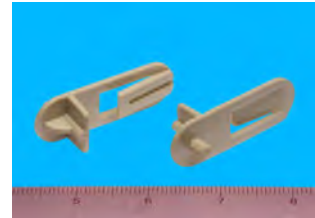




#3218 Kitchen
5mm hex .280 long peg
for 1/2" Shelf



#3233 Kitchen
5mm hex peg .300 long
for 5/8" shelf
Multiple colors



#3253 Kitchen
5mm hex peg .295 long
for 3/4" Shelf



#3203 Kitchen
5mm hex peg .300 long
for 3/4 shelf
Horizontal lock feature



#3226 Kitchen
Disappearing
5mm round .230 long
peg for 3/4" Shelf
Multiple colors



#3267 Commercial
2 hex pegs .295 long
5mm diam.
32mm apart
3/4" shelf



#3227 Commercial
Two 5mm round .260
long pegs 32mm apart
for 3/4 shelf
Multiple colors



#3206 Commercial
Two 5mm .290 long
round pegs 32mm apart
for 3/4" or 1" Shelf
Center screw hole



#3248 Kitchen
5mm .270 long hex Peg
for 1/2" Shelf
Multiple colors



#3228 Commercial
Two 5mm round .260
long pegs 32mm apart
for 1" shelf
Multiple colors



#3209 Kitchen
Mount this mullion clip
using system screws
Three holes for easy
alignment



#3224 Kitchen
Disappearing
5mm round .230 long
peg for 5/8" Shelf
Multiple colors





#3202 Kitchen

1/4" Peg
1/2" Shelf
Multiple colors



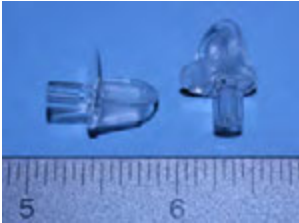
#3244 Kitchen

1/4" diameter peg
3/4" Thick Shelf
Peg length .290
Multiple colors



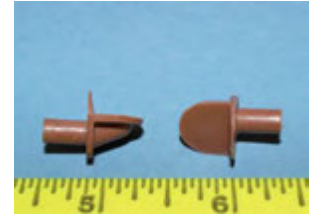
#18152 Vanity

5mm hex peg
300 long peg
Multiple colors



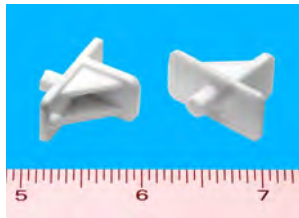
#1815 Vanity

5mm round peg
350 long peg
Multiple colors



#3811 - 5mm peg
#1811 - 1/4" peg
Kitchen

Multiple colors



#3246 Kitchen

1/4" Peg
5/8" Shelf
Multiple colors



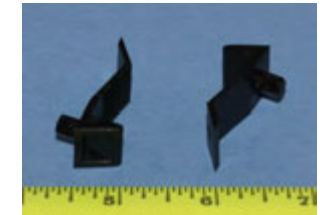
#3221 Garage

Two 5mm pegs.
325 long pegs
32mm apart
Multiple colors



#3264 Furniture

Universal 1/2" - 3/4"
1/4" peg
Multiple colors



#3252 Commercial

5mm steel peg
1/2" shelf
Clear



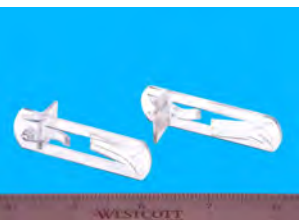
#3258 Kitchen

1/4" Peg
5/8" Shelf
Standard, Right or Left
Multiple colors



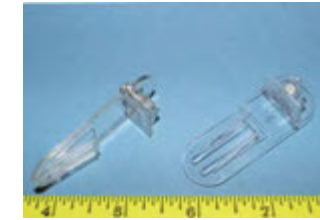
#3201 Kitchen

1/4" peg
3/4 Shelf
Multiple colors



#3247 Commercial

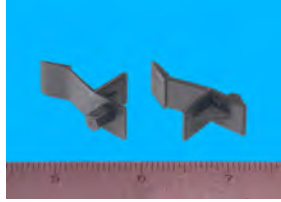
5mm steel peg
5/8" shelf
Clear





Shelf Supports

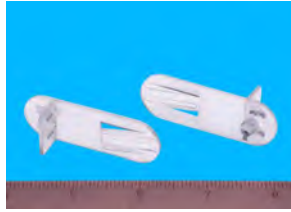
#3254 Shelf Support
1/4" Peg
1/2" Shelf
Multiple colors



#3232 Shelf Support
Disappearing
1/4" long peg
1/2" Shelf
Multiple colors



#3245 Shelf Support
1/4" peg
3/4" Shelf
Peg length .230
Multiple colors



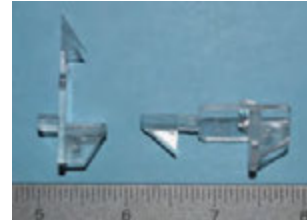
#3234 Shelf Support
Disappearing
1/4" peg
5/8" Shelf
Multiple colors



#3249 Shelf Support
1/4" Peg
1/2" Shelf
Multiple colors



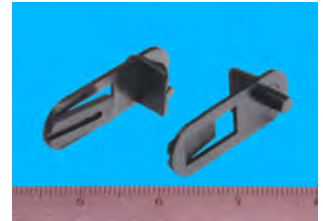
#3236 Shelf Support
Disappearing
1/4" peg
3/4" Shelf
Multiple colors



#3243 Shelf Support
1/4" Peg
Clear



#3238 Kitchen
1/4" hex peg .300 long
for 5/8" shelf
Multiple colors



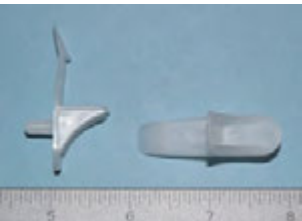
#32431 Shelf Support
5mm Peg
Clear



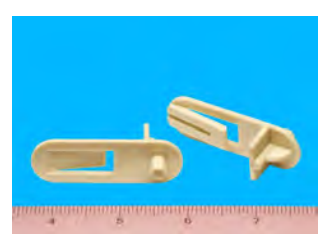
#3239 Kitchen
1/4" hex peg .300 long
for 3/4" shelf
Multiple colors



#32691 Vanity
5mm peg .300 long
5/8" Shelf
Multiple colors



#3240 Kitchen
1/4" hex peg .300 long
for 1/2" shelf
Multiple colors





Bainbridge Manufacturing, Inc.

Plastic Hardware Specialists | *Cabinet Master® Plastic Hardware*

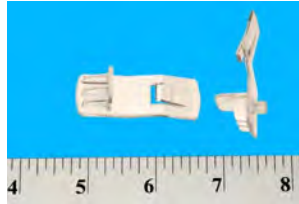
PO Box 487, 237 W. 3rd Street Waterville, WA 98858

1-509-745-9555 | info@bainbridgemfg.com

www.bainbridgemfg.com

Shelf Supports

#3257 Shelf Support
5mm" Peg
5/8" Shelf
Multiple colors



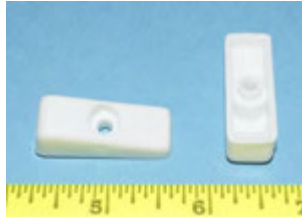
##32581 Kitchen
5mm Peg
5/8" Shelf
Standard, Right or Left
Multiple colors



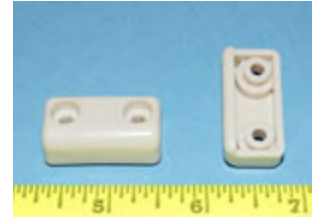


Drawer Bumpers

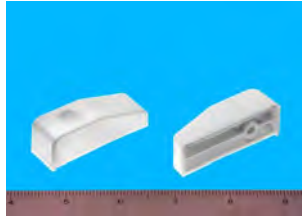
#4602 Drawer Bumper
1/2" thick
reference tab
Multiple colors



#4600 Drawer Bumper
3/8" thick
reference tab
Multiple colors



#4605 Drawer Bumper
3/4" thick
reference tab
Multiple colors



#4604 Drawer Bumper
1/2" thick
reference tab
Multiple colors



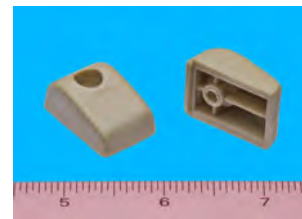
#4603 Drawer Bumper
1/2" thick
no reference tab
Multiple colors



#4606 Drawer Bumper
1/2" thick
Reference tab



#4601 Drawer Bumper
7/16" thick
reference tab
Multiple colors





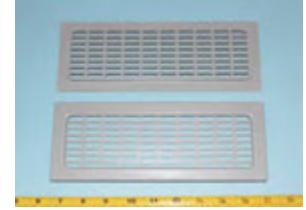
#4501 Vent Grill

Fits 2" hole
5/8 deep walls
Multiple colors



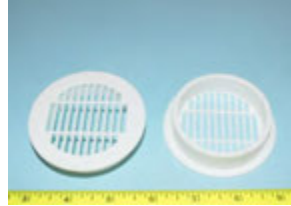
#4505 Vent Grill

2-5/8" X 8-21/32"
1/4 deep walls
Multiple colors



#4500 Vent Grill

Fits 2-1/2" hole
5/8 deep walls
Multiple colors



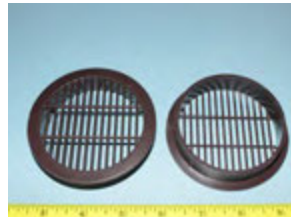
#4506 Vent Grill

2-1/2" X 10"
1/4" deep walls
Multiple colors



#4502 Vent Grill

Fits 3" hole
5/8 deep walls
Multiple colors



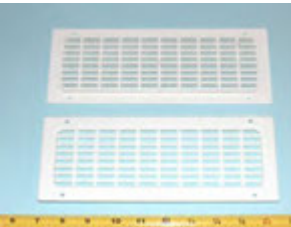
#4503 Vent Grill

2-3/8" X 8-5/8"
3/8 Deep walls
Multiple colors



#4504 Vent Grill

2-5/8" X 8-21/32"
1/4 deep walls
Has screw holes
Multiple colors



#4508 Vent Grill

2" X 4" rectangle hole
3/4" deep walls
Multiple colors



#4509 Vent Grill

2-7/16" X 8-3/8"
3/8 deep walls
Multiple colors



#4507 Vent Grill

4" Round hole
3/4" deep walls
Multiple colors





#6004 Epoxy
Right and Left
10mm pegs on center
High strength ABS
Ultra grip pegs



#6206 Undermount
8mm ultra grip pegs
1/2" R—L movement



#6002 Epoxy Socket
3mm frame
10mm handed pegs
Right and Left
High strength ABS
Ultra grip pegs



#6208 Undermount
No pegs screw on
1/2" R—L movement



#6003 Epoxy Socket
3mm frame
8mm handed pegs
Right and Left
High strength ABS



#6743 Full Extension
No pegs.
Screw on
2-9/16" deep



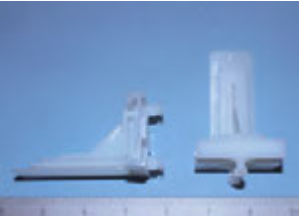
#6005 Epoxy
Right and Left
8mm pegs on center
High strength ABS
Ultra grip pegs



#674 Full Extension
8mm pegs.
Right and Left
2-9/16" deep
Peg length 3/8"



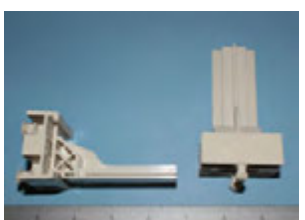
#6018 Undermount
8mm standard pegs
1/2" R—L movement



#6781 Euro
8mm pegs
Adjustable
3" deep
Right and Left



#6203 Under Mount
3/4" R—L adjustment
Stop 1-1/4 from back
3-3/4 long
8mm standard pegs



#678 Euro
10mm pegs
Adjustable
3" deep
Right and Left





Drawer Slide Sockets

#6012 Epoxy Socket
3mm frame
no pegs
Right and Left
High strength ABS



#6202 Under Mount
No pegs
Non handed
Screw in place



#6019 Undermount
8mm standard pegs
1/2" R—L movement



#683 Under Mount
Adjustable socket
3 inches long
8mm locking pegs



#6204 Under Mount
3/4" R—L adjustment
Stop 1-7/8 from back
3-3/4 long
8mm standard pegs



#621SC Epoxy
Self Closing
1" x 7/16"
2-3/8" deep
Right and Left



#6207 Undermount
8mm standard pegs
1/2" R—L movement



#6208 Undermount
no pegs , screw on
1/2" R—L movement



#6209 Under Mount
3/4" R—L adjustment
3-3/4 long
8mm pegs



#6017 Bent Tail
Natural ABS
1/4" peg



#6211 Undermount
8mm standard pegs
1/2" R—L movement



#6791 Undermount
Adjustable socket
3 inches long
8mm locking pegs
Tight Friction R—L





#6402 Euro
2- 3/8" long
Right and Left



#648 Euro
2 -1/8" deep
Right and Left



#675 Euro
Adjustable
3" deep
Right and Left



#647 Euro
Adjustable
2-1/8" deep
Right and Left



#6016 Undermount
8mm ULTRA GRIP pegs.
3-3/4" long
Center pegs



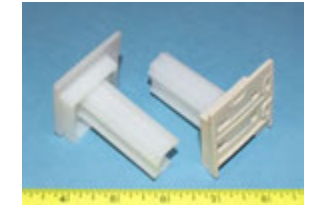
#622 Epoxy
Adjustable
1" x 7/16"
2-3/8" deep
Right and Left



#6101 Full Extension
Adjustable
Staple or screw in place
1/2" R to L movement
4" long



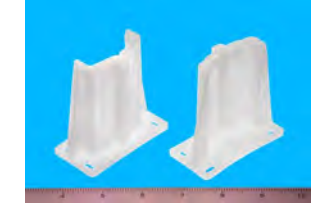
#647SC Euro
Adjustable
Self Closing
1" x 7/16"
2-1/8" deep
Right and Left



#6742 Full Extension
8mm pegs
Right and Left
2-9/16" deep
Peg length 5/8"



#615 Full Extension
2-9/16" deep



#679 Undermount
Adjustable socket
3 inches long
8mm locking pegs
Smooth Friction



#6752SC Euro
Adjustable
Self Closing
3" deep 8mm pegs
Right and Left





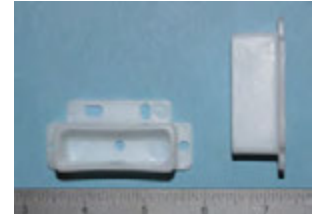
#675SC Euro

Adjustable
Self Closing
3" deep
Right and Left



#609 Socket

Replacement for older
kitchens



#6472SC Euro

8mm pegs
Self Closing adjustable
Right and Left



#613 Socket

Replacement for older
kitchens



#622SC Epoxy

Adjustable
Self Closing
2-3/8" deep
Right and Left



#627 Full Extension

1-9/16" deep



#659 Euro

Adjustable
2-7/8" deep
Right and Left



#644 Full Extension

1-9/16" deep



#675 SC Euro

Adjustable
Self Closing
3" deep
Right and Left



#664 Socket

3/4 X 3/4 X 1" deep
Replacement for older
kitchens



#606 Socket

Replacement for older
kitchens



#6222SC Epoxy

Adjustable 8mm pegs
Self Closing
2-3/8" deep
Right and Left





#660SC Euro
Self Closing
3" Long
Right and Left



#665 Epoxy
Right and Left
Screw or staple
5/16" x 7/8" x 2-1/16"



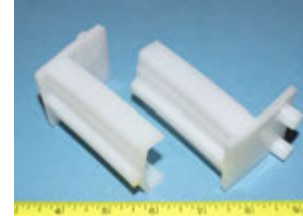
#662SC Euro
Self Closing
3" deep
Right and Left



#648SC Euro
Self Closing
2 -1/8" deep
Right and Left



#687 Full Extension
Fixed 10mm pegs
2-7/8" deep
Right and Left



#621 Epoxy
2-3/8" deep
1" x 7/16"
Right and Left



#6800 Hanging socket
1-5/8" x 1/2" x 3/4"



#6802 Hanging Socket
1-5/8" x 1/2" x 1-1/2"



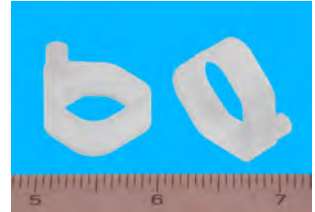


Shelf Hold Down Clips

#3405
Shelf Hold Down
5mm peg w/lead in
1/8" wide



#3407
Shelf Hold Down
5mm peg
5/16" Wide for short shelf



#3411
Shelf Hold Down
5mm peg
STAR ENDS



#3408
Shelf Hold Down
5mm peg
ROUND ENDS



#3409
Shelf Hold Down
3mm peg
STAR ENDS



#3406
Shelf Hold Down
3mm peg
ROUND ENDS



#3400 RIGID
Shelf Hold Down
5mm peg
1/4" wide



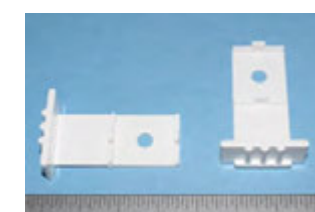
#3403
Shelf Hold Down
5mm peg 7/32 long
5/16 wide



#3402
Shelf Hold Down
5mm peg 15/64 long
5/16 wide



#3401 Shelf Retainer
Shipping clip for 5mm
peg shelf supports to
keep shelf from sliding
forward



#3410
Shelf Hold Down
5mm peg
1/8" wide





Hinge , Catch & Lock Spacers

#3519 Spacer
Hafele LOOX LED IR
Switch spacer
1/8" thick
Multiple colors



#3509 Hinge Plate Spacer
3mm thick - stackable
Multiple colors



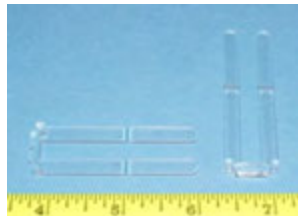
#3520 Hinge Spacer
1/4" Thick



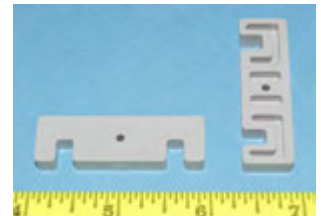
#3502 Hinge Plate Spacer
5mm thick



#3510 Hinge Plate Spacer
1/16" thick - snaps in half for smaller hinges



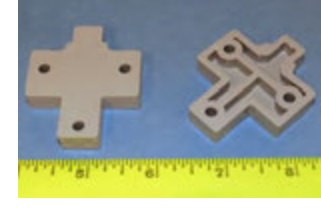
#3512 Hinge Plate Spacer
1/4" thick



#3506 Hinge Plate Spacer
1/8" thick
Large holes for 7.8mm euro screw



#3505 Hinge Plate Spacer
screw holes at .188"
1/4" thick



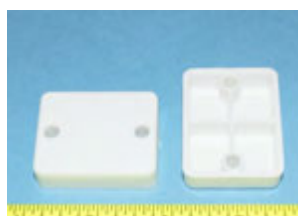
#3511 Magnetic Catch Spacer
3/16" thick
Fits Hafele 246.15



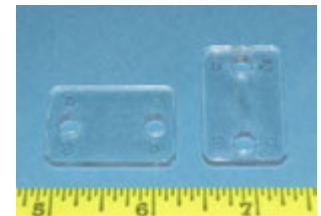
#3501 Hinge Plate Spacer
7.6 mm Thick



#3503 Catch Spacer
1/2" thick
2 holes 32mm apart



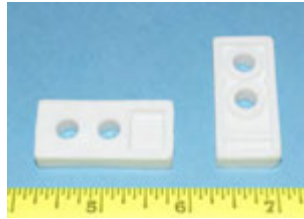
#3516 Catch Spacer
1/8" thick
3/4" X 1-1/4"





Hinge, Catch & Lock Spacers

#3518 Catch Spacer
3/16" thick.



#3517 Lock Spacer
1/8" thick with 4 screw holes
Black



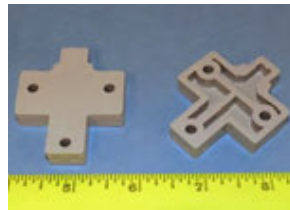
#3514 Catch Spacer
5/16" thick.



#3521 Lock Spacer
1-11/16 X 1-11/16
3/8" thick
3/4 X 7/8 oblong hole
White



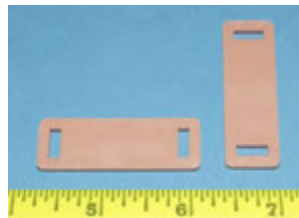
#3508 Hinge Plate Spacer
Small holes for 7mm euro screw
3/8" thick



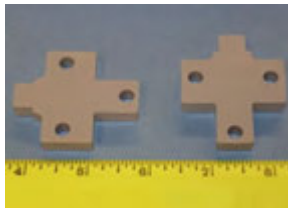
#3513 Catch Spacer
1/4" thick with small holes for wood screws



#3515 Catch Spacer
1/8" thick
3/8" X 1-1/2"



#3507 = 1/4"
#3504 = 3/8"
Hinge Plate Spacer
screw holes at .245"



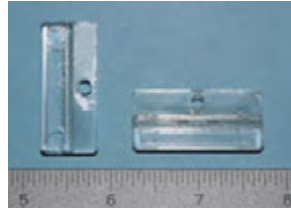


Screen and Door Panel Clips

#1806
Straight Clip
1/8" thick
Attach with screw
Clear and colors



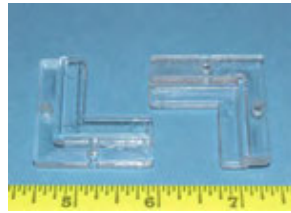
#1807
Straight Clip
3/16" thick
Attach with screw
Clear and colors



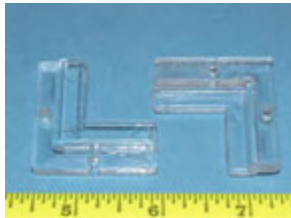
#1809
Straight Clip
3/8" thick
Attach with screw
Clear and colors



#1804
Corner Clip
1/8" thick
Attach with screw
Clear and colors



#1805
Corner Clip
3/16" thick
Attach with screw
Clear and colors





#1803
Screen Clip
Flush



#1858
Screen Clip
1/16"



#1813
Screen Clip
1/8



#1853
Screen Clip
3/16"



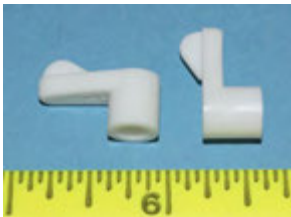
#1823
Screen Clip
3/16"



#1862
Screen Clip
Flush



#1854
Screen Clip
1/4"



#1852
Screen Clip
1/16"



#1855
Screen Clip
5/16"



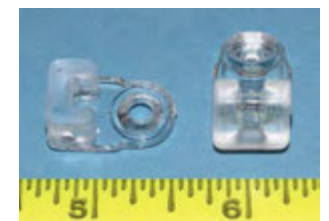
#1857
Screen Clip
1/8"



#1820
Screen Clip
Flush



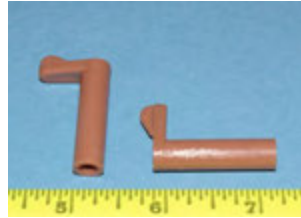
#1810
Screen Clip
1/4"



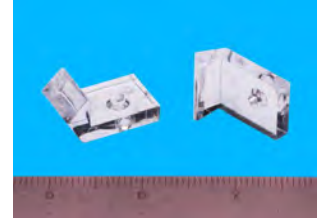


Screen and Mirror Clips

#1863
Screen Clip
1-3/16"



#1866
Mirror Clip
Side Mount



#1850
Screen Clip
1-1/8"



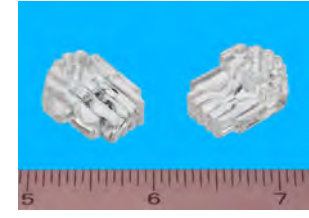
#1859
Mirror Clip
1/4"



#1856
Screen Clip
3/8"



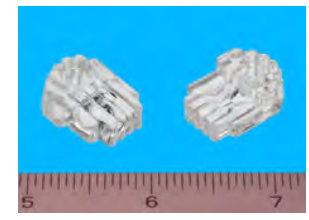
#1861
Mirror Clip
1/8"



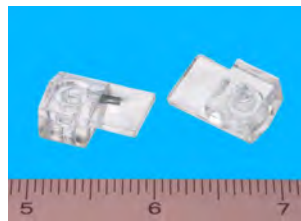
#1851
Screen Clip
7/16"



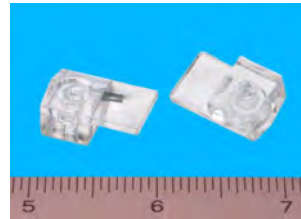
#1860
Mirror Clip
3/16"



#1865
Mirror Clip
1/8"



#1864
Mirror Clip
1/4"





Bainbridge Manufacturing, Inc.

Plastic Hardware Specialists | Cabinet Master® Plastic Hardware

PO Box 487, 237 W. 3rd Street Waterville, WA 98858

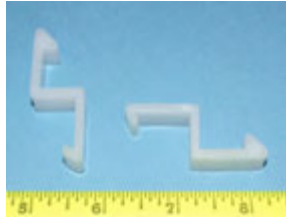
1-509-745-9555 | info@bainbridgemfg.com

www.bainbridgemfg.com

Door Clips

#3300 Door Clip

Small Doors
5/8 X 3/4



#3301 Door Clip

Large Doors
3/4" X 3/4"



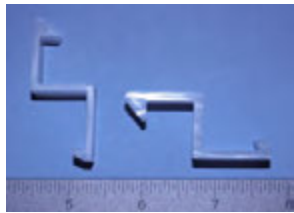
#3302 Door Clip

3/4 X 3/4 X 1-23/64



#3303 Door Clip

3/4 X 21/32 X 21/32





Bainbridge Manufacturing, Inc.

Plastic Hardware Specialists | Cabinet Master® Plastic Hardware

PO Box 487, 237 W. 3rd Street Waterville, WA 98858

1-509-745-9555 | info@bainbridgemfg.com

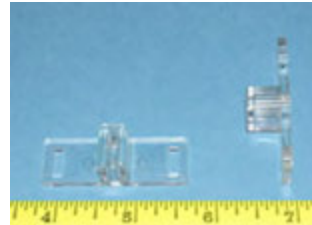
www.bainbridgemfg.com

Drawer & Door Stops

#1902
Drawer Stop
2" long



#1915
Door Stop
Uses 2 screws



#1994
Drawer Stop
2-1/2" long with extra
rib for strength



#1992
Drawer Stop
2-1/2" long



#1960 Drawer Latch
Designed for RV,
Camper marine drawer
Lift drawer to open





Bainbridge Manufacturing, Inc.

Plastic Hardware Specialists | Cabinet Master® Plastic Hardware

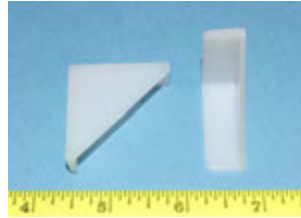
PO Box 487, 237 W. 3rd Street Waterville, WA 98858

1-509-745-9555 | info@bainbridgemfg.com

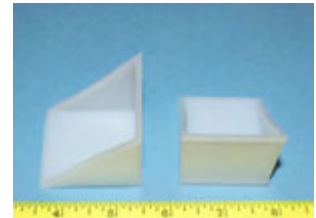
www.bainbridgemfg.com

Corner Protectors

#5405
Corner Protector
1-1/4" X 1-1/4"



#1500
Corner Protector
Fits 1-1/2" thick board

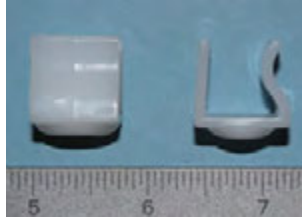


#15011
Corner Protector
3" X 3"

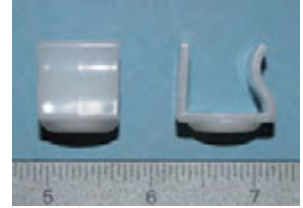




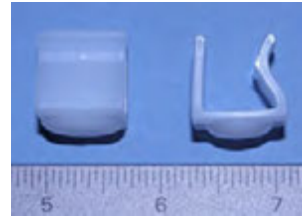
#5402 Slide Glide
snap on to a 1/2"
cabinet sidewall to slide
cabinet in shop



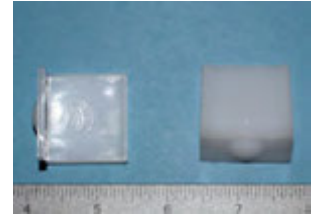
#5403 Slide Glide
snap on to a 5/8"
cabinet sidewall to slide
cabinet in shop



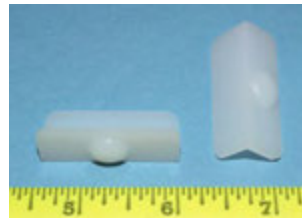
#54021 Slide Glide
snap on to a 12mm
cabinet sidewall to slide
cabinet in shop



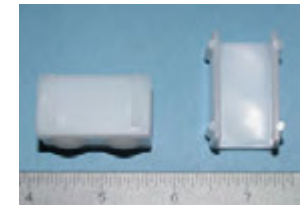
#5404 Slide Glide
Staple in place



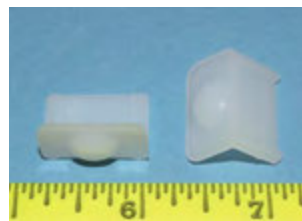
#1928 Slide Glide
1-1/2" X 9/16"
1/8" thick bump
staple in place.



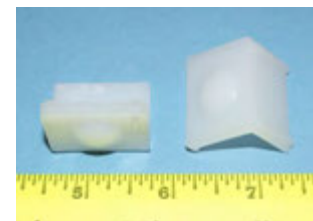
#1988 Slide Glide
snap on to 3/4" thick
material and staple in
place



#1947 Slide Glide
7/8" X 1/2" X 1/2"
staple in place for small
applications



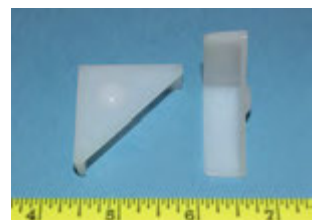
#1983 Slide Glide
1-1/8" X 3/4" X 7/8"
staple in place.



#1985 Slide Glide
1-1/2" long X 9/16"
1/8" thick bump
safety tab for holding



#1914 Slide Glide
Has slide bump for
bottom attachment
1-1/4" X 1-1/4"



#5401 Slide Glide
Snap on to 3/8 thick
material and staple in
place



#19882 Slide Glide
snap on to 1" thick
material and staple in
place

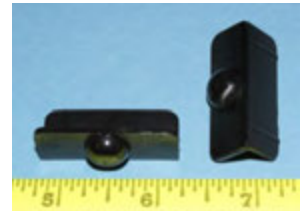




#1903 Slide Glide
1-5/8" long X 3/4" wide
X 3/16" thick — staple
in place.



#19281 Slide Glide
1-1/2" X 9/16"
3/16" bump on bottom



#1989 Slide Glide
1/2"



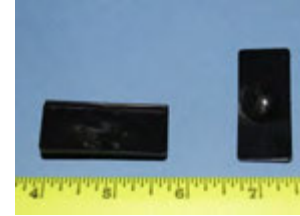
#5406 Slide Glide
2-1/2" X 3/4"



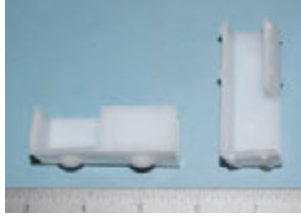
#19881 Slide Glide
2-5/8" X 1/2"



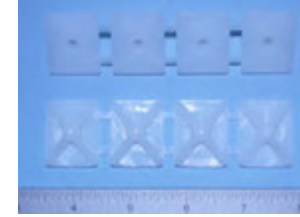
#1906 Slide Glide
1-3/4" long 3/4" wide
with 5/16" thick bump
staple in place.



#19886 Slide Glide
2-1/2" X 3/4"



#5407 Slide Glide
1" X 1-1/8"
Strip of 4—break off
after stapling in place



#19887 Slide Glide
2-5/8" X 1/2"



#1946 Slide Glide
2" long X 3/4" wide X
1/2" wide , staple in
place on corner.

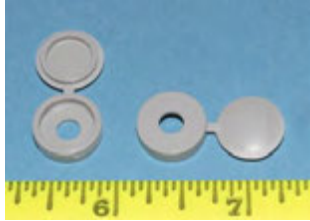




#1930 Screw Cover

Fold over lid to hide screw.

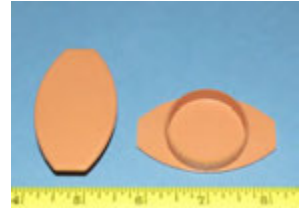
Multiple colors



#1932 Hinge Cover

Covers 35mm extra hinge holes

Multiple colors

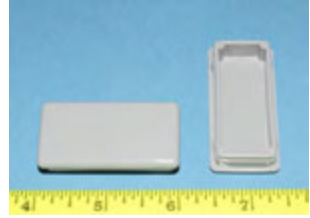


#3022 Tube Cap

Rectangular tube 1" X 2"

12-14 gage steel

Multiple colors



#1922 Hinge Cover

Covers 35mm extra hinge holes

Multiple colors

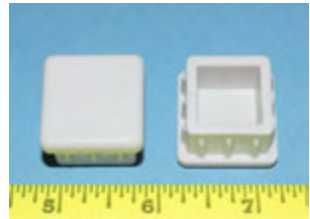


#3017 Tube Cap

1" X 1"

12-14 gage steel

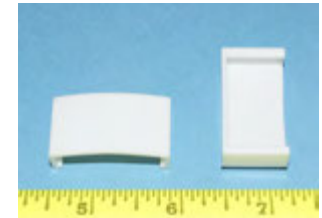
Multiple Colors



#3021 Extrusion Cap

For wall hanging displays

Multiple Colors



#1924 Castle Cap

Textured finish

Multiple colors



#1907 Tube Cap

Fits 3/4" tube

Multiple colors



#1923 Castle Cap

Smooth finish

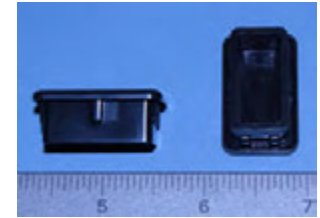
Multiple colors



#3018 End Cap

1 1/4" X 3/4"

Multiple colors



#3023 Dual Plug

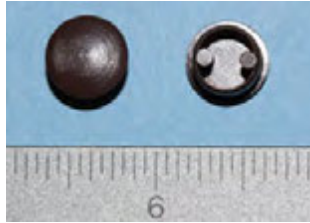
2 8mm at 32mm part

Multiple colors

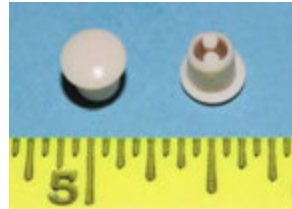




#30151 Hole Plug
10mm
Multiple colors



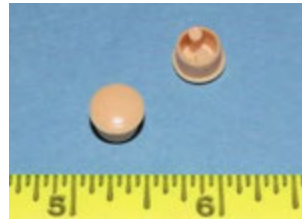
#3001 Hole Plug
5mm
Multiple colors



#3005 Hole Plug
1/4"
Multiple colors



#3010 Hole Plug
8mm
Multiple colors



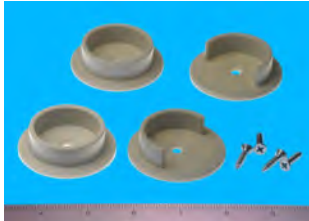
#3024 Finishing Plug
Hole Plug 5/8"
Multiple colors





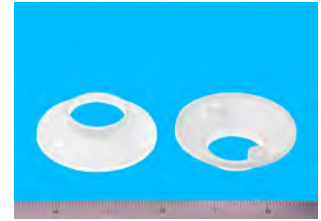
#1323 Pole Socket

Fits 1-3/8" rod



#1327 Pole Socket

Fits 1-1/6" steel rod in mobile homes



#1324 Pole Socket

Fits 1-3/8" rod and has 2 5mm pegs on back



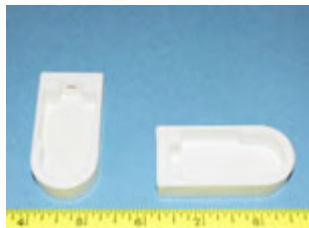
#1320 Pole Socket

Fits 1-5/16" rod and has 2 5mm pegs on back



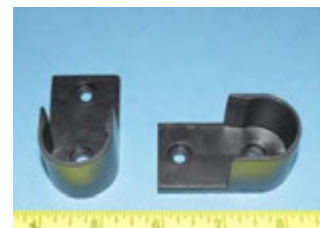
#1322 Pole Socket

Fits 3/4" rod and hangs from top of cabinet or closet using a #8 wood-screw



#1329 Pole Socket

Fits 1" rod and has 2 screw holes for #5 pan head screw



#1330 Pole Socket

Fits 17mm rod and has 5mm peg on back

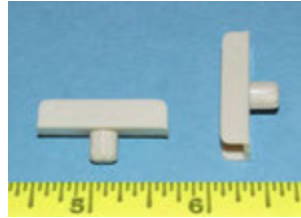




Vertical Divider Clips

#4205 Divider Clip

5mm diameter peg
Holds 1/4" thick board
Multiple colors



#4212 Divider Clip

3/4" long
1/8" saw slot
1/4" panel
Multiple colors



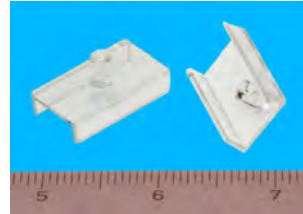
#4206 Divider Clip

1/8" saw slot tab,
Holds 1/4" thick board
Multiple colors



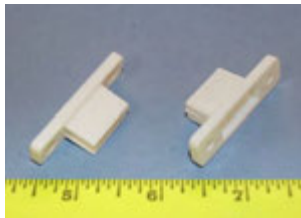
#4200 Divider Clip

1/4" diam .295 long peg
Holds 1/2" thick board
Multiple colors



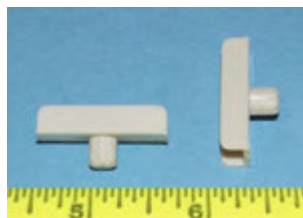
#4201 File Holder

2 holes 32mm apart.
Multiple colors



#4204 Divider Clip

1/4" diameter peg
Holds 1/4" thick board
Multiple colors



#4203 Divider Clip

5mm diameter peg
Holds 1/2" thick board
Multiple colors



#4211 Divider Clip

1/2" drawer side
1/4" thick board
2" long



#4202 File Holder

2 5mm diameter pegs
32mm apart
Multiple colors



#4210 Divider Clip

1/2" drawer side
1/4" thick board
3-1/2" long



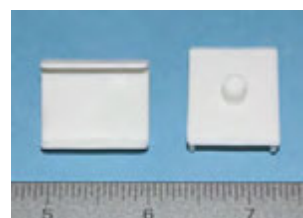
#4209 Divider Clip

1/8" saw slot
3/8" thick board



#4208 Divider Clip

1/4" diameter peg
Holds 3/4" thick board
Multiple colors





Bainbridge Manufacturing, Inc.

Plastic Hardware Specialists | Cabinet Master® Plastic Hardware

PO Box 487, 237 W. 3rd Street Waterville, WA 98858

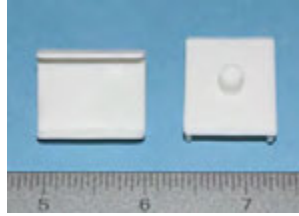
1-509-745-9555 | info@bainbridgemfg.com

www.bainbridgemfg.com

Vertical Divider Clips

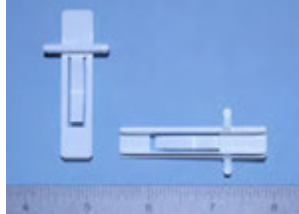
#4207 Divider Clip

5mm diameter peg
Holds 3/4" thick board
Multiple colors



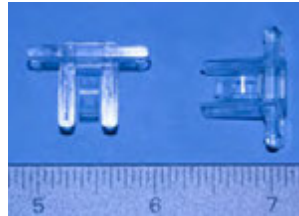
#4213 Divider Clip

7mm panel 2-3/8" long
(1/8" saw slot tab)
Multiple colors



#4214 Divider Clip

7mm panel 3/4" long
(1/8" saw slot tab)
Multiple colors



#4215 Divider Clip

1/4" diam .295 long peg
Holds 1/2" thick board
Multiple colors





Backplates and Guides

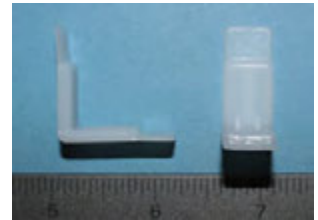
#508 Backplate

1-3/16" x 5/16"
(for wood)
NO reference tabs



#218 Drawer Glide

5/8" X 5/8" X 1/2" X
1/8" Thick With 5/16"
Staple Tabs



#514 Drawer Guide

Backplate 1-1/8" x 1/4"



#200 Drawer Glide

5/8" X 5/8" long
1/2" Wide
.080" Thick



#1957 Eccentric Guide

1/4" tall X 9/16" OD
Attach with screw
Multiple colors



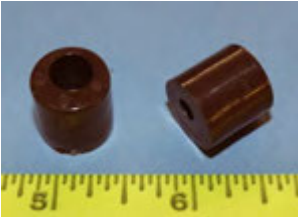
#201 Drawer Glide

3/8" x 5/8" long
1/2" Wide
.080" Thick



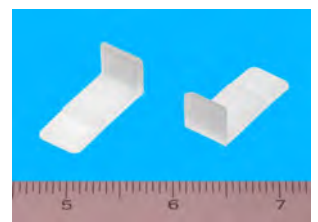
#1909 Eccentric Guide

9/16" tall X 9/16" OD
Attach with screw
Multiple colors



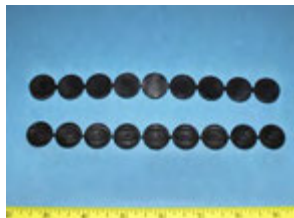
#206 Drawer Glide

3/8" X 5/8" X .080"
1/2" wide
5/16" staple tab



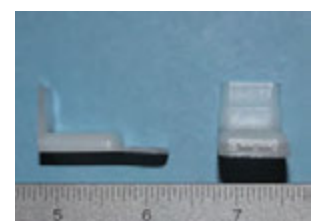
#298 Drawer Glide

Staple on twist off
3/4" OD X 3/16" thick



#209 Drawer Glide

5/8" X 3/4" X .080"



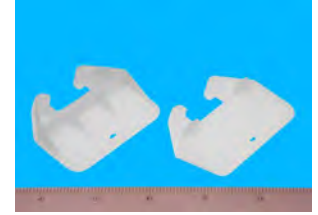
#502 Backplate

(for wood)
3/4" X 5/16"
reference tabs



#509 Backplate

1-3/16" x 5/16"
(for wood) reference
tabs

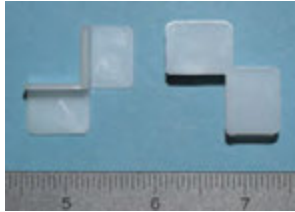




Backplates and Glides

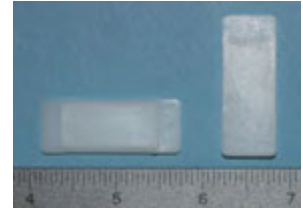
#205 Drawer Glide

Reversible
5/16" x 1/2"
.080" Thick



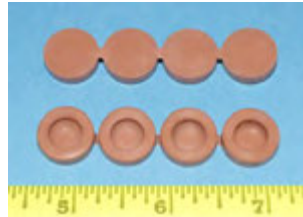
#230 Drawer Glide

1/8" X 1-5/8"
Staple tabs on each end



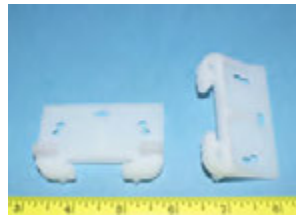
#295 Drawer Glide

Staple on twist off
5/8" OD
3/16" thick



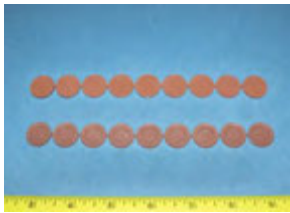
#520 Backplate

1-5/16" x 5/32"
(for metal)



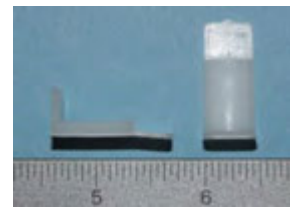
#299 Drawer Glide

Staple on twist off
11/16" OD
1/8" thick



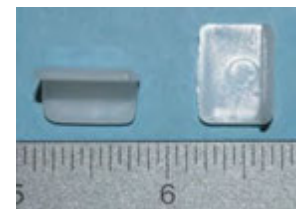
#208 Drawer Glide

5/32" thick with staple
tab



#225 Drawer Glide

.080" thick with staple
tab





Drawer Pulls

#1710 Drawer Pull
Inset and has holes for
two #6 wood screws
Multiple colors



#1724 Velociraptor
HUGE 8" Long Rubber
Drawer Pull
Peg 3" apart
Multiple colors



#1722 Drawer Pull
96mm hole spacing
No threads
Use #8 sheet metal
screw
Multiple colors



#1725 Stegosaurus
HUGE 11-1/2" Long
Rubber Drawer Pull
Pegs 3" apart
Multiple colors



#1718 Triceratops
HUGE 7" Long Rubber
Drawer Pull
Pegs 3" apart
Multiple colors



#1727 Pleisosaur
HUGE 11" Long Rubber
Drawer Pull
Pegs 3" apart
Multiple colors



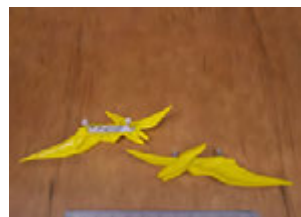
#1719 Long Neck
HUGE 11" Long
Rubber Drawer Pull
Pegs 3" apart
Multiple colors



#1723 Tyrannosaurus
HUGE 7-1/2" Long
Rubber Drawer Pull
Pegs 3" apart
Multiple colors



#1726 Pterodactyl
HUGE 11-1/2" Long
Rubber Drawer Pull
Pegs 3" apart
Multiple colors





#1979 Dowel pin

8mm diameter

ABS

1-1/2" long



#1996 Dowel Pin

SUPER GRIP

8mm diameter

Nylon

1-1/2" long

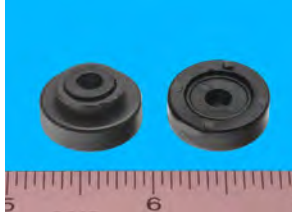


#740 Utility Roller

Attach with screw

Has axle to move freely

Black and Brown



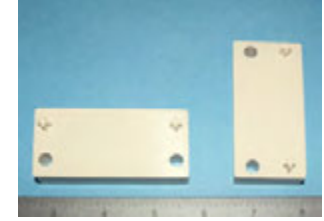
#37001 Adapter

1/2" build up adapter

for Bainbridge

Undermount spacers

Multiple colors



#1958 Drapery Hanger

Attach with screws for

hanging drapery rods



#37000 Adapter

1/8" build up adapter

for Bainbridge spacers.



#1952 Wire

Management Hook

Attach with screws for

hanging wires

Multiple colors



AWFS[®]



ASSOCIATION OF
WOODWORKING
& FURNISHINGS
SUPPLIERS



KITCHEN CABINET
MANUFACTURERS ASSOCIATION*



BHMA
builders hardware manufacturers
association