



ROCKFORD PROCESS CONTROL

2023 HINGES AND HARDWARE CATALOG



How do you define a qualified supplier?

As Rockford Process Control planned for a successful future, one of the questions we asked ourselves was: "What do we need to look for in establishing supplier partnerships to assure that we have a dependable, trustworthy and competitive supply chain?"

Our answer was to find companies with:

- >> **Experience and leadership**
- >> **Expertise with the products**
- >> **A high level of customer service**
- >> **Consistent quality, on-time delivery and competitive pricing**

We believe that if this concept is important to our company's future success, it should be important to our customers as well. That is why this definition has become our mantra for serving our customers.

Experience and expertise count. In 1983, Paul Colloton and Dick Gleichman founded RPC with the determination that quality was not an aim but a direct result of a consistent commitment to hard work and listening to customer needs. In 1987, they acquired the institutional market leading National Lock Casework Hardware hinge product line from Amerock. An emphasis was put on updating equipment and improving the quality control. This product offering is still the recognized standard for the institutional, hospital and educational markets.

To better serve our customers varied needs, RPC acquired the assets of Terry Hinge and Hardware in 2007. The Terry brand has a 50 year heritage of providing manufactured and imported product lines.

As our name suggests, Rockford Process Control's main competitive advantages are:

- >> **Design**
- >> **Manufacturing**
- >> **Quality control processes**
- >> **Customer satisfaction**

To remain competitive in this global market, we have our own full-time staff in Asia tasked with finding the best factories to build product to our designs and specifications. We do "in factory" inspections during manufacture to insure product consistency and quality. When you, or your customer's, production schedule and reputation depend on timely delivery of quality hinges and hardware, you can put your trust in Rockford Process Control.

Green Hinges for Green Cabinets

Now you can specify hinges for your project's commercial and institutional cabinets to be GREEN or qualify for LEED™ certification points. Rockford Process Control domestically manufactured hinges reduce your environmental impact in a variety of ways: we utilize steel with recycled content, fabricate the component parts using water soluble lubricants, recycle all material punched out of the product during the fabrication process and package in fully recyclable shipping containers. When you see the "American Flag" icon on the following pages, you can be assured that the product was manufactured in our centrally located factory in Rockford, Illinois.



Rockford Process Control — Your Hardware Solution Provider

Custom and Special Product Solutions

RPC wants to provide products to meet your specific needs. If you need an application specific hinge, pull, stamped bracket or other piece of hardware, please don't hesitate to contact RPC's sales manager at 815-966-2001 or email hardware@modernforge.com with your exact needs.

Our engineering staff will evaluate your need and help you design the right product for your application. For a competitive quote, please send us a sketch or sample of your custom part, including material and quantity requirements. If you have a target price you need to meet, let us know, and we will strive to meet or beat your target.

We are always seeking new products to expand our ability to serve our customers, old and new. Please let us know what your needs are so we can provide solutions for your needs.

Import Expertise

RPC has our own staff in China to find the best supplier for a product. Our importing capabilities include providing on-going quality control, refining manufacturing techniques and obtaining the best possible value for our customers. Please talk to us about becoming your direct container supplier for all of your high-volume product needs.

Limited Warranty

Rockford Process Control, Inc. (RPC) warrants its hinges and hardware against defects in material and workmanship for a period of twelve (12) months from the date of shipment.

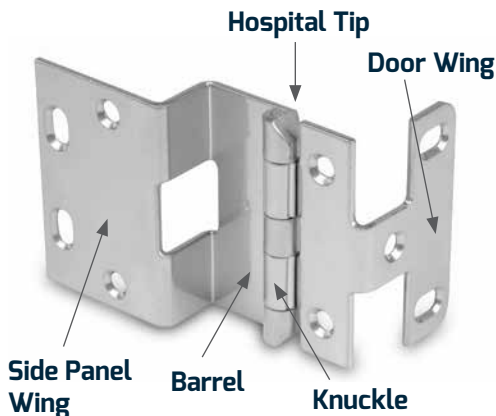
RPC will send the original consumer purchaser, without charge, a new RPC hinge to replace any defective RPC hinge subject to this warranty. RPC specifically does not warrant removal of the defective hinge or installation of a new hinge. This warranty does not cover hinges that have been incorrectly installed, exposed to excessive loads or abused in any way. This warranty is a warranty of hardware replacement only. No other warranty is expressed or implied.

Alphabetical Index

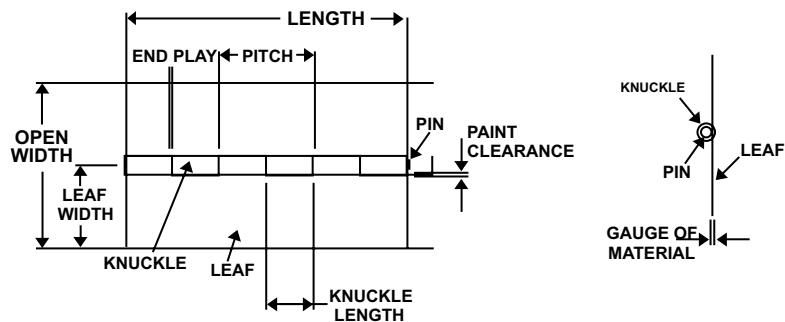
Product	Page
Aluminum Brackets	39
Button Catches	25
Café Hinges	24
Casework Hardware	25-27
Coat Hooks	27
Continuous Hinges	18-23
Door Hardware	13-15
Double Acting Hinges	24
Elbow Catches	24-25
Five-Knuckle Overlay Hinges	6-9, 12
Five-Knuckle Lipped Hinges	10
Flush Hinges.	11
Glass Door Hardware	25
Granite Counter Support Brackets	39
Institutional Hinges	6-12
Lid Supports	32
Magnetic Catches	30-31
Magnetic Touch Latches	29
Pilasters and Steel Standards	36
Pulls	28
Roller Catches	25
Shelf Pins	33
Shutter Pins	32
Standards and Brackets	34-36
Tri-Angle Brackets.	39
Wire Doors.	16-17
Work Station Brackets	37-38

HINGE TERMINOLOGY

Institutional Hinge



Continuous Hinge



Barrel: The portion of a hinge formed by knuckles of the door leaf and side panel leaf when joined by the pin.

Door Wing: In a five-knuckle hinge, it is the hinge leaf that is mounted to the door. It has two knuckles.

End Play: The amount of axial movement between the leaves measured parallel to the axial centerline of the pin.

Flush: A solid door that sits within the cabinet opening so that the front surface of the door is even with the front of the cabinet side panel.

Gauge: The thickness of the material from which a hinge is produced.

Hospital Tip: A hinge barrel whose ends are beveled towards each other.

Inset: Regarding Wire Doors: The wire door sets or rests inside the cabinet opening with the vertical members flush with the side panels. *See Flush.*

Knuckle: The curled hollow portion of a hinge through which the hinge pin is inserted. Also known as the curl.

Leaf: The segment of the hinge extending outward from the knuckle, which rotates around the hinge pin.

Leaf Width: The dimension from the centerline of the pin to the outside edge of the leaf measured perpendicular to the axial centerline of the pin.

Length: The dimension from one end of the hinge to the other measured parallel to the axial centerline of the pin.

Lipped: A door with a rabbet cut around the back edge of the door's perimeter. The back portion of the door recesses into the cabinet. The remaining front part of the door will overlay the cabinet side panel.

Non-Removable Pin: A hinge pin secured by a knurl on the pin and spun on both ends or by other means.

Onset: Regarding Wire Doors: The wire door frame sets or rests in front of the side panels.

Open Width: The dimension from one side of the hinge to the other outside edge measured perpendicular to the axial centerline of the pin.

Overlay: A door which is mounted to the front of the cabinet and covers a portion of the cabinet side panel.

Pin: The wire or rod which extends through the hinge about which the leaves revolve. The pin holds the leaves of a hinge together.

Pin Types:

- Spun Pin
- Loose Pin
- Double Oval Pin
- Sheared Tight Pin (no head)
- Staked Pin



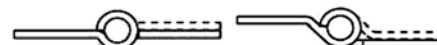
Pitch: The dimension from a point on the knuckle to the same point on an adjacent knuckle on the same leaf.

Reveal: In an overlay door mounting application, the exposed portion of the cabinet side panel not covered by the door when closed.

Side Panel Wing: In a five-knuckle hinge, it is the hinge leaf that is mounted to the cabinet side panel. It has three knuckles.

Side Play: The amount of movement of the leaves perpendicular to the axial centerline of the pin. Caused by excessive clearance between the pin and the inside diameter of the knuckle.

Swaging: Forming one or both leaves toward or beyond the centerline of the pin. Swaging reduces the distance between the leaves when the hinge is closed to a parallel position.

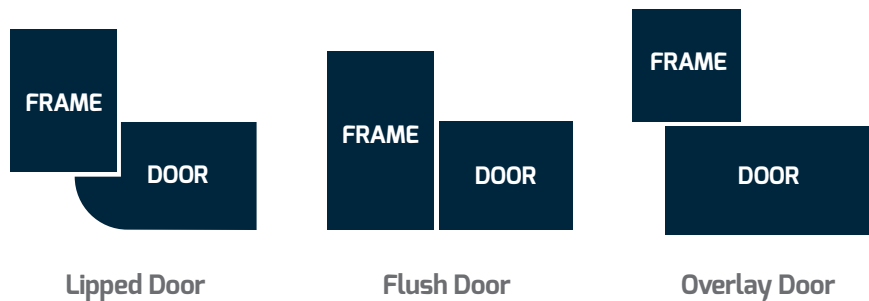


**Half Swage
Both Leaves**

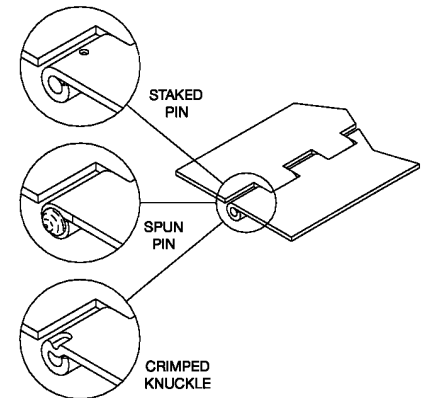
**One Leaf
Full Swage**

HINGE TERMINOLOGY

Door Mounting Configurations



Pin Retention Methods



ORDERING INFORMATION

RPC part numbers consist of the model number followed by the finish code as shown to the right.

Model No.:

376 Overlay Hinge, 3/4" x 13/16"

Finish Code:

P28 Chrome Powder Coat

Part No. **376-P28**

Standard and Custom Finishes for Casework Hinges, Pulls and Wire Doors

RPC's in-house powder coating system allows us to match colors to meet your color specification. Our powder coating process provides you with a durable, epoxy-based finish.

Finish Codes: To simplify manufacturing and inventory control, RPC has reviewed and consolidated its finish offerings into standard and special colors. Standard colors will be stocked as noted for a given product.

Special colors are available. Special color requests are subject to lead times, minimum order size, special materials up-charges and custom set-up charges.

Please contact RPC customer service to discuss minimums, lead times and up-charges for your special or custom color requirements and for color samples.

Standard Powder Coat Colors

1D	Gloss Black
23	Matte Black
E51	Gloss White
E47	Beige
E48	Dove Grey
P28	Chrome

Plated Finishes

26D	Dull Chrome
26S	Brushed Chrome

Special Finishes

Upon Request

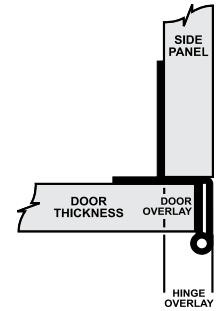
THE ROCKFORD HINGE™

These hinges have been the industry standard for five-knuckle hinges for over 75 years!

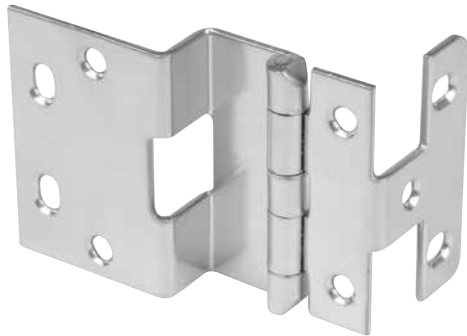
They exceed ANSI/BHMA 156.9 Grade 1 requirements.

Hospital tips, 2-3/4" height, 270° opening angle, drilled knuckle ID.

All mounting holes are countersunk for #8 flat head screws.



Part Number 374



Side Panel: 3/4" (19 mm)
 Door Thickness: 3/4" (19 mm)
 Hinge Overlay: 23/32" (18.3 mm)
 Door Overlay: 15/32" (11.9 mm)
 Gauge: .095" (2.4 mm)
 Hole Pattern: 32 mm centers with 37 mm setback
 Pack: 100/case, cell packed

Specify finish when ordering.



Part Number 376, 37655



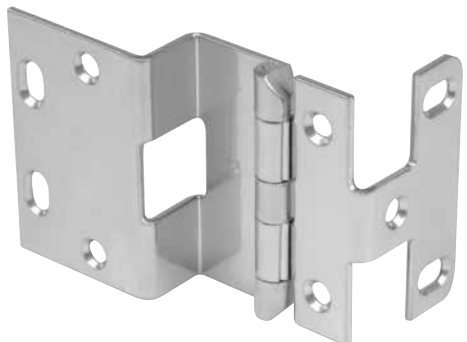
Side Panel: 3/4" (19 mm)
 Door Thickness: 13/16" (20.6 mm)
 Hinge Overlay: 23/32" (18.3 mm)
 Door Overlay: 15/32" (11.9 mm)
 Gauge: .095" (2.4 mm)
 Hole Pattern: 32 mm centers with 37 mm setback
 Pack: 100/case, cell packed

Specify finish when ordering.

37655: .090" Type 304 stainless steel
 Door Thickness: 50/case, cell packed



Part Number 375



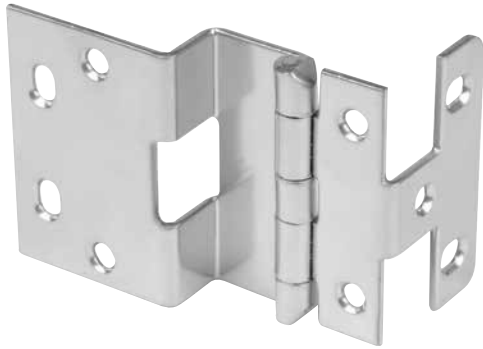
Side Panel: 13/16" (20.6 mm)
 Door Thickness: 13/16" (20.6 mm)
 Hinge Overlay: 25/32" (19.8 mm)
 Door Overlay: 17/32" (13.5 mm)
 Gauge: .095" (2.4 mm)
 Hole Pattern: 32 mm centers with 37 mm setback
 Pack: 100/case, cell packed

Specify finish when ordering.



FIVE-KNUCKLE OVERLAY HINGES

Part Number 454

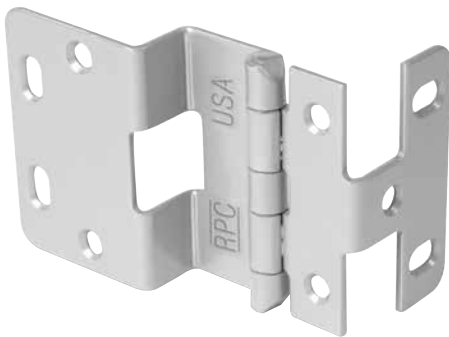


Side Panel: 3/4" (19 mm)
Door Thickness: 3/4" (19 mm)
Hinge Overlay: 23/32" (18.3 mm)
Door Overlay: 15/32" (11.9 mm)
Gauge: .095" (2.4 mm)
Hole Pattern: Side panel 32 mm centers with 37 mm setback, door wing holes 45 mm on center
Pack: 100/case, cell packed

Specify finish when ordering.



Part Number 456

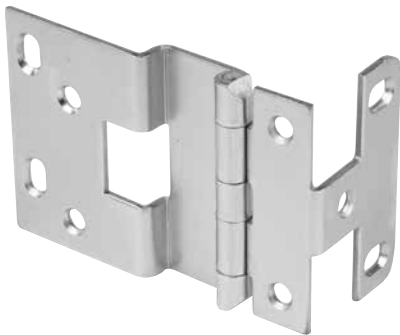


Side Panel: 3/4" (19 mm)
Door Thickness: 13/16" (20.6 mm)
Hinge Overlay: 23/32" (18.3 mm)
Door Overlay: 15/32" (11.9 mm)
Gauge: .095" (2.4 mm)
Hole Pattern: Side panel 32 mm centers with 37 mm setback, door wing holes 45 mm on center
Pack: 100/case, cell packed

Specify finish when ordering.



Part Number 848

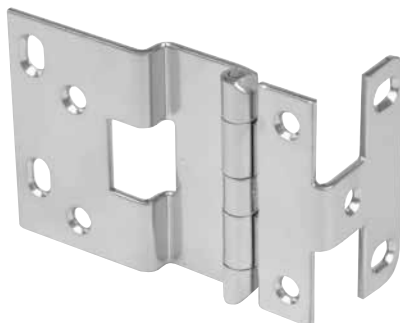


Side Panel: 3/8" (9.5 mm)
Door Thickness: 3/4" (19 mm)
Hinge Overlay: 11/32" (8.7 mm)
Door Overlay: 1/8" (3.2 mm)
Gauge: .095" (2.4 mm)
Hole Pattern: Staggered side panel mounting holes, can be used back-to-back on shared 3/4" side panel
Pack: 100/case, cell packed

Specify finish when ordering.



Part Number 849



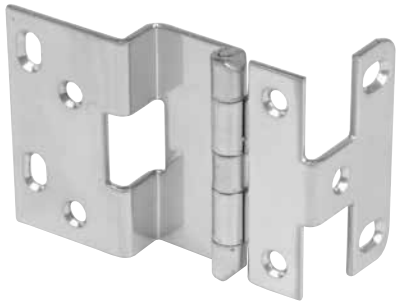
Side Panel: 3/8" (9.5 mm)
Door Thickness: 13/16" (20.6 mm)
Hinge Overlay: 11/32" (8.7 mm)
Door Overlay: 1/8" (3.2 mm)
Gauge: .095" (2.4 mm)
Hole Pattern: Staggered side panel mounting holes, can be used back-to-back on shared 3/4" side panel
Pack: 100/case, cell packed

Specify finish when ordering.



FIVE-KNUCKLE OVERLAY HINGES

Part Number 853

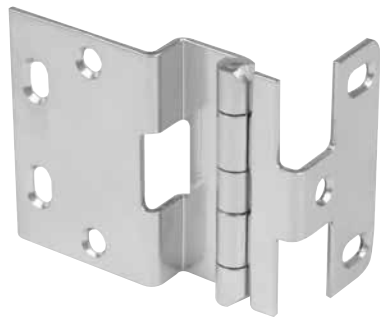


Side Panel: 5/8" (15.9 mm)
Door Thickness: 13/16" (20.6 mm)
Hinge Overlay: 19/32" (15.1 mm)
Door Overlay: 11/32" (8.7 mm)
Gauge: .095" (2.4 mm)
Hole Pattern: Staggered side panel mounting holes
Pack: 100/case, cell packed

Specify finish when ordering.



Part Number 8314, 8314SS



Side Panel: 1/2" (12.7 mm)
Door Thickness: 1/2" (12.7 mm)
Hinge Overlay: 1/2" (12.7 mm)
Door Overlay: 9/32" (7.1 mm)
Gauge: .090" (2.3 mm)
Hole Pattern: Commonly used with Phenolic Materials,
32 mm centers with 37 mm setback

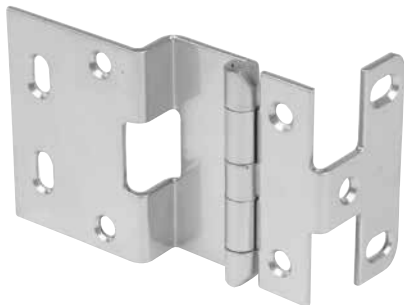
8314SS: .090" Type 304 Stainless Steel

8314 Pack: 100/case, cell packed

8314SS Pack: 50/case, cell packed



Part Number 8362, 8362SS



Side Panel: 5/8" (15.9 mm)
Door Thickness: 13/16" (20.6 mm)
Hinge Overlay: 19/32" (15.1 mm)
Door Overlay: 11/32" (8.7 mm)
Gauge: .095" (2.4 mm)
Hole Pattern: 32 mm centers with 37 mm setback

8362SS: .090" Type 304 Stainless Steel

8362 Pack: 100/case, cell packed

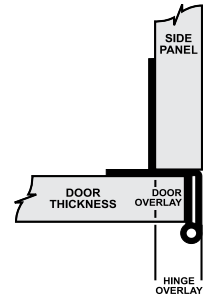
8362SS Pack: 50/case, cell packed

Specify finish when ordering.

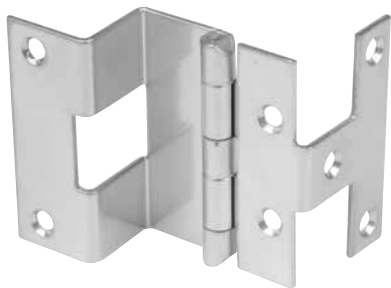


SPECIAL FIVE-KNUCKLE OVERLAY HINGES

These special overlay hinges will accommodate application requirements for doors with a thickness of up to 1-3/8" and side panels to 1" thick.



Part Number 388

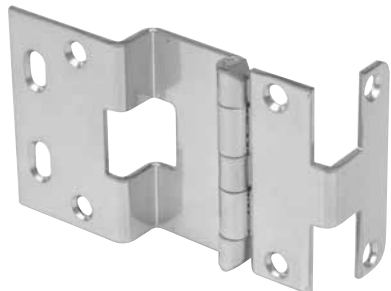


Side Panel: 1" (25.4 mm)
 Door Thickness: 13/16" (20.6 mm)
 Hinge Overlay: 1" (25.4 mm)
 Door Overlay: 25/32" (19.8 mm)
 Gauge: .083" (2.1 mm)
 Hole Pattern: 1" side panel leaf
 Pack: 100/case, cell packed

Specify finish when ordering.



Part Number 844

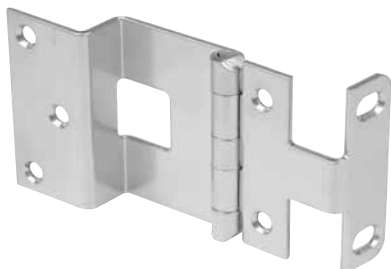


Side Panel: 5/8" (15.9 mm)
 Door Thickness: 1-1/16" (27 mm)
 Hinge Overlay: 19/32" (15.1 mm)
 Door Overlay: 11/32" (8.7 mm)
 Gauge: .095" (2.4 mm)
 Hole Pattern: 32 mm centers
 Pack: 100/case, cell packed

Specify finish when ordering.



Part Number 7036



Side Panel: 3/4" (19 mm)
 Door Thickness: 1-3/8" (34.9 mm)
 Hinge Overlay: 23/32" (18.3 mm)
 Door Overlay: 15/32" (11.9 mm)
 Gauge: .095" (2.4 mm)
 Hole Pattern: 1-1/4" side panel leaf
 Pack: 100/case, cell packed

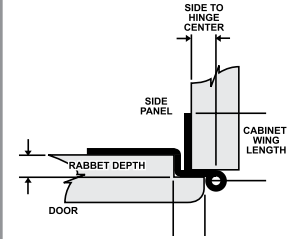
Specify finish when ordering.



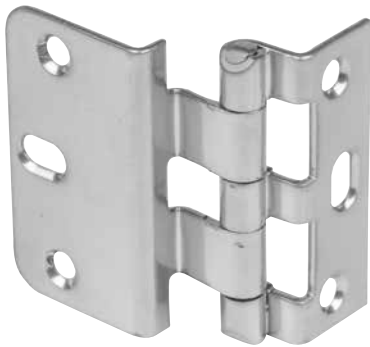
FIVE-KNUCKLE LIPPED HINGES

RPC five-knuckle lipped hinges are designed for use with inset doors having a rabbet depth of 3/8".

Hospital tips are standard, contact RPC regarding your special needs.



Part Number 349



Rabbet Depth: 3/8" (9.5 mm)
 Side To Hinge Center: 25/64" (9.9 mm)
 Cabinet Wing Length: 13/16" (20.6 mm)
 Rabbet Width: 3/8" (10.3 mm)
 Height: 2-1/2" (63.5 mm)
 Gauge: .072" (1.8 mm)
 Hole Pattern: Vertical side panel slot, horizontal door slot for easy mounting

Pack: 100/case, cell packed

Specify finish when ordering.



Part Number 362, 36255



Rabbet Depth: 3/8" (9.5 mm)
 Side To Hinge Center: 7/16" (11.1 mm)
 Cabinet Wing Length: 1-31/32" (50 mm)
 Rabbet Width: 1/2" (13.5 mm)
 Height: 2-3/4" (69.9 mm)
 Gauge: .083" (2.1 mm)
 Hole Pattern: Horizontal mounting slots on both side panel and door

36255: .078" Type 304 Stainless Steel

362 Pack: 100/case, cell packed

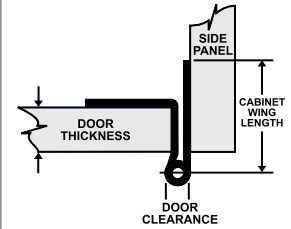
36255 Pack: 50/case, cell packed

Specify finish when ordering.

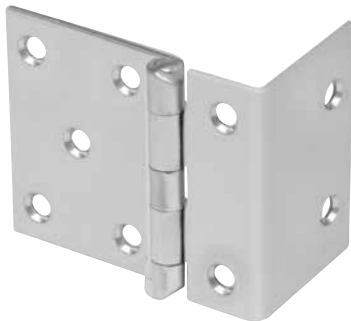


FLUSH HINGES

RPC flush hinges with hospital tips come in heights of 2", 2-1/2" and 2-3/4"



Part Number 860



Door Thickness: 3/4" (19 mm)
 Door Clearance: 7/32" (5.6 mm)
 Cabinet Wing Length: 1-59/64" (48.8 mm)
 Barrel Height: 2-1/2" (63.5 mm)
 Gauge: .083" (2.1 mm)
 Pack: 100/case, cell packed

Specify finish when ordering.



Part Number 2107



Door Thickness: 13/16" (20.6 mm)
 Door Clearance: 1/4" (6.4 mm)
 Cabinet Wing Length: 2-3/16" (55.6 mm)
 Barrel Height: 2-3/4" (69.9 mm)
 Gauge: .095" (2.4 mm)
 Pack: 100/case, cell packed

Specify finish when ordering.



Part Number 8581



Door Thickness: 13/16" (20.6 mm)
 Door Clearance: 7/32" (5.6 mm)
 Cabinet Wing Length: 1-7/8" (47.6 mm)
 Barrel Height: 2" (50.8 mm)
 Gauge: .083" (2.1 mm)
 Pack: 100/case, cell packed

Specify finish when ordering.



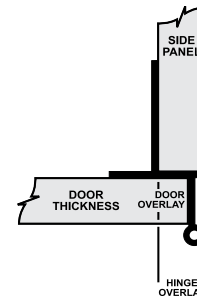
OVERLAY HINGES

This five-knuckle institutional hinge was designed and manufactured to provide a quality hinge at a value price to meet the needs of today's competitive marketplace.

Exceeds ANSI/BHMA 156.9 Grade 1 requirements.

Hospital tips, 2-3/4" hinge height, 270° opening angle.

All mounting holes are countersunk for #8 flat head screws.



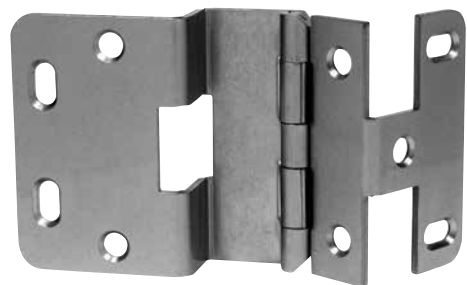
Part Number 74



Side Panel: 3/4" (19 mm)
 Door Thickness: 3/4" (19 mm)
 Door Overlay: 15/32" (11.9 mm)
 Gauge: .090" (2.3 mm)
 Hole Pattern: 32 mm centers with 37 mm setback
 Finishes: Plated dull chrome – 26D
 Chrome (powder coat) – CPC
 Black (powder coat) - BL
 Pack: 100/case, poly bagged



Part Number 76



Side Panel: 3/4" (19 mm)
 Door Thickness: 13/16" (20.6 mm)
 Door Overlay: 15/32" (11.9 mm)
 Gauge: .090" (2.3 mm)
 Hole Pattern: 32 mm centers with 37 mm setback
 Finishes: Plated dull chrome – 26D
 Chrome (powder coat) – CPC
 Black (powder coat) - BL
 Pack: 100/case, poly bagged
76SS: .090" Type 304 stainless steel



DOOR HARDWARE

Hardware for use on cabinet side panels and solid doors, and for use on wire doors.

RPC offers wood door hardware to match the mounting configuration also used on wire door cabinet designs such as the 2107 hinge and cabinet door hasps shown here.

Part Number 2101



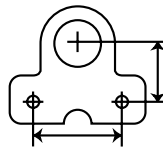
Wood Door Label Holder

Side Panel: 3-3/16" wide x 1-1/2" high

Specify finish when ordering.



Part Number 2102



Inset Cabinet Hasp

Height (A):

63/64" (25 mm)

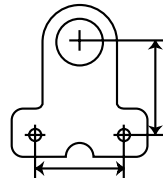
Distance Between Holes (B):

1-37/64" (40 mm)

Specify finish when ordering.



Part Number 2103



Onset Cabinet Hasp

Height (A):

1-21/32" (42 mm)

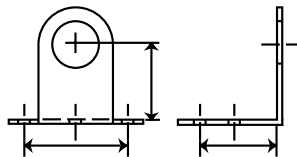
Distance Between Holes (B):

1-37/64" (40 mm)

Specify finish when ordering.



Part Number 2104



Onset Solid Door Hasp

Height (A):

1-17/32" (34 mm)

Distance Between Holes (B):

1-37/64" (40 mm)

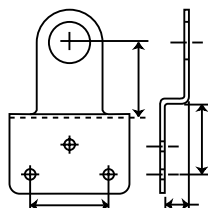
Mounting Hole Location (C):

1-1/2" (38.2 mm)

Specify finish when ordering.



Part Number 2105



Cabinet Hasp For Overlay Solid Doors

Height (A):

1-1/2" (38.2 mm)

Distance Between Holes (B):

1-37/64" (40 mm)

Mounting Hole Location (C):

1" (25.4 mm)

Overlay:

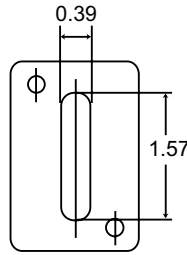
35/64" (14 mm)

Specify finish when ordering.



DOOR HARDWARE

Part Number 2106



Door Plate

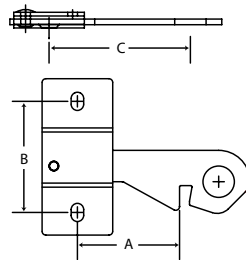
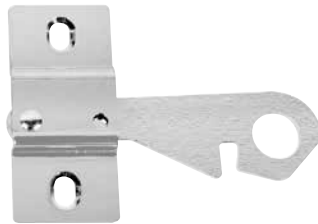
Size: 1-37/64" (40 mm) x
2-23/64" (60 mm)

Vertical Slot: 10 mm x 40 mm

Specify finish when ordering.



Part Number 2801-26B



Right Hand Cabinet Latch

(for doors hinged on LH side)

Height (A): 1-5/8" (41.3 mm)

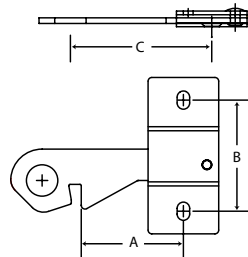
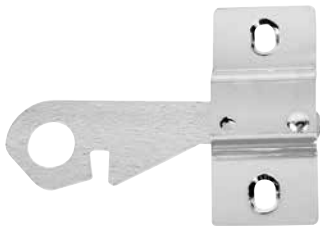
Distance Between Holes (B): 1-25/32" (45 mm)

Mounting Hole Location (C): 2-1/4" (57.2 mm)

Available bright chrome plated only.



Part Number 2802-26B



Left Hand Cabinet Latch

(for doors hinged on RH side)

Height (A): 1-5/8" (41.3 mm)

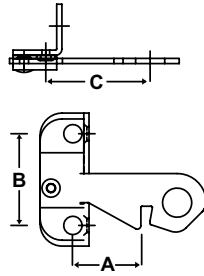
Distance Between Holes (B): 1-25/32" (45 mm)

Mounting Hole Location (C): 2-1/4" (57.2 mm)

Available bright chrome plated only.



Part Number 2804-26B



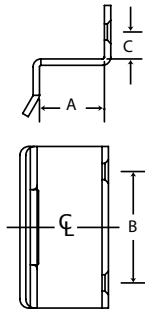
Double Solid Door Latch

Height (A): 3/4" (19.1 mm)
 Distance Between Holes (B): 1-37/64" (40 mm)
 Mounting Hole Location (C): 1/2" (12.7 mm)

Available bright chrome plated only.



Part Number 2813-26B



Solid Door Strike Plate

Height (A): 29/32" (23 mm)
 Distance Between Holes (B): 1-37/64" (40 mm)
 Mounting Hole Location (C): 21/64" (8.4 mm)

Available bright chrome plated only.



Part Number 2814-26B



Thru Door Strike Plate for 13/16" Doors

Dimension: 2-3/8" (60 mm) x 1-9/16" (40 mm)
 Distance Between Holes: 1-37/64" (40 mm)
 Mounting Hole Location: 1-1/16" (27 mm)

Available bright chrome plated only.

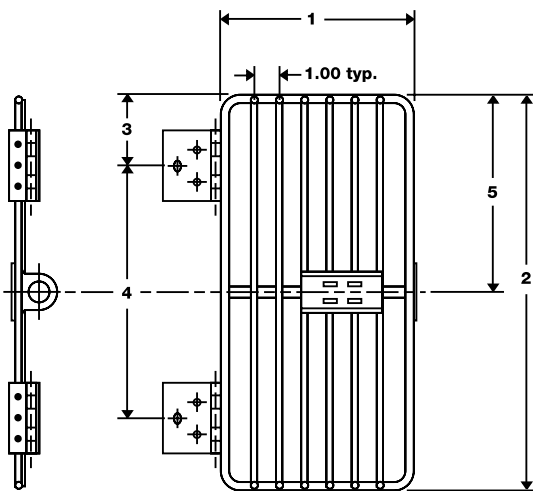


WIRE DOORS

RPC wire doors are suitable for music room, instrument and uniform storage as well as other commercial applications. Choose from RPC's wide selection of standard size wire doors. We can also supply doors to meet your custom size requirements. RPC can match your standard or custom color choice using a durable powder coat finish.

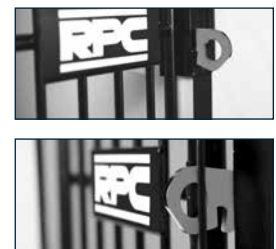
The door frame wire is 5/16" in diameter. Vertical door wires are 3/16" in diameter and have beveled ends to produce a clean, finished look.

Wire doors are supplied complete with five-knuckle hinges, a hasp welded to the door frame and a label holder welded to the vertical wires. A mating Cabinet Hasp - Inset (No. 2102) is included with each door. A No. 2103 Cabinet Hasp - Onset may be substituted for use in onset applications.



Stay Close Wire Door Latch

RPC now offers an enhanced stay close wire door latch option. The cabinet latch and door strike are constructed of 13 gauge steel and are available in a bright chrome finish. This system allows the doors to be used in either a right or left hand application. The contour of the latch allows it to travel over the hasp until it falls into a positive locked position. This latching arrangement is available for both solid and wire grille doors. For security, the door can be locked with a padlock.



Ordering Information: To order wire doors with the stay close latch feature, add an "S" after the standard wire door part number (i.e., No. 2022S). The mating latch (left or right handed) will be included in your order.

Type	Part No.	Door Width in. (mm)	Door Height in. (mm)	Hinge Location in. (mm)	Distance Between Outside Hinges	Centerline Location	Number of Hinges
A*	2022	7.40" (188 mm)	15.67" (398 mm)	2.83" (72 mm)	10.00" (254 mm)	7.84" (199 mm)	2
B*	2024	11.77" (299 mm)	15.67" (398 mm)	2.83" (72 mm)	10.00" (254 mm)	7.84" (199 mm)	2
C*	2026	24.88" (632 mm)	26.30" (668 mm)	2.83" (72 mm)	20.64" (524 mm)	13.15" (334 mm)	2
D*	2028	24.88" (632 mm)	39.61" (1006 mm)	2.83" (72 mm)	33.95" (862 mm)	19.80" (503 mm)	3
E*	2030	22.83" (580 mm)	79.45" (2018 mm)	4.09" (104 mm)	71.27" (1810 mm)	39.73" (1009 mm)	3 DD**
E*	2031	22.83" (580 mm)	79.45" (2018 mm)	4.09" (104 mm)	71.27" (1810 mm)	39.73" (1009 mm)	3 DD**
F*	2032	24.88" (632 mm)	79.45" (2018 mm)	4.09" (104 mm)	71.27" (1810 mm)	39.73" (1009 mm)	3
	2378	22.83" (580 mm)	26.30" (668 mm)	2.83" (72 mm)	20.64" (524 mm)	13.15" (334 mm)	2 DD**
	2379	22.83" (580 mm)	39.61" (1006 mm)	2.83" (72 mm)	33.95" (862 mm)	19.80" (503 mm)	3 DD**
	2704	22.83" (580 mm)	26.30" (668 mm)	2.83" (72 mm)	20.64" (524 mm)	13.15" (334 mm)	2 DD**
	2742	22.83" (580 mm)	39.61" (1006 mm)	2.83" (72 mm)	33.95" (862 mm)	19.80" (503 mm)	3 DD**
	2020	7.40" (188 mm)	39.61" (1006 mm)	2.83" (72 mm)	33.95" (862 mm)	19.80" (503 mm)	2
Tolerances		+/- .06 (+/- 1.5)	+/- .06 (+/- 1.5)	+/- .03 (+/- 0.8)	+/- .06 (+/- 1.5)	+/- .03 (+/- 0.8)	N/A

* Standard wire door sizes ** Double door w/label holder

WIRE DOORS

Typical wire door cabinet dimension and design configurations are shown below. Contact RPC application engineering with questions or special requirements.

Applications for STANDARD WIRE DOORS

15 "A" Doors: (fig 1)	3 compartments wide inside dimension = 8.00" (203.2 mm) 5 compartments high inside dimension = 14.85" (377.2 mm)
9 "A", 1 "C" Doors: (fig 2)	3 compartments wide inside dimension = 8.00" (203.2 mm) 3 (top) compartments high inside dimension = 14.85" (377.2 mm) 1 compartment high inside dimension = 25.67" (652 mm) 1 spacer, recessed approx. 1", 5.03" high (25.4 mm, 127.8 mm)
10 "B" Doors: (fig 3)	2 compartments wide inside dimension = 12.375" (314.3 mm) 5 compartments high inside dimension = 14.85" (377.2 mm)
6 "B", 1 "C" Doors: (fig 4)	2 compartments wide inside dimension = 12.375" (314.3 mm) 3 (top) compartments high inside dimension = 14.85" (377.2 mm) 1 compartment high inside dimension = 25.67" (652 mm) 1 spacer, recessed approx. 1", 5.03" high (25.4 mm, 127.8 mm)
3 "C" Doors: (fig 5)	1 compartment wide inside dimension = 25.50" (647 mm) 3 compartments high inside dimension = 25.67" (652 mm)
2 "D" Doors: (fig 6)	1 compartment wide inside dimension = 25.50" (647 mm) 2 compartments high inside dimension = 38.63" (981.2 mm)
"E" Doors: (pair) (fig 7)	Cabinet (outside dm): = 48" w x 30" d x 84" h (1219.2 mm x 762 mm x 2133.6 mm) Toe kick: 4" (101.5 mm) from floor to bottom of shelf, recessed approx. 3" (76.2 mm) Vertical members = 3/4" thick (19.1 mm) Top horizontal member = 3/4" thick (19.1 mm) Shelf 1" (25.4 mm) thick, recessed approx. 1" (25.4 mm) 1 compartment wide inside dimension = 46.50" (1118 mm) 1 compartment high inside dimension = 78.25" (1987.6 mm)
1 "F" Door: (fig 8)	1 compartment wide inside dimension = 25.50" (647.7 mm) 1 compartment high inside dimension = 78.25" (1987.6 mm)

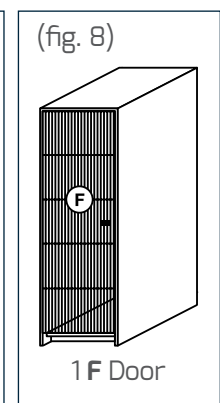
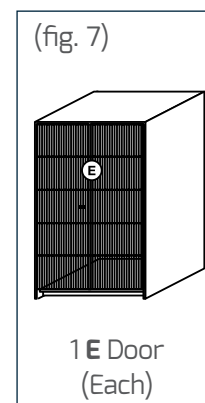
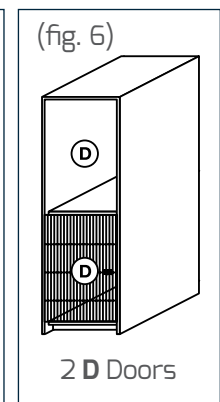
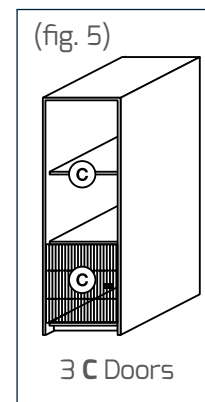
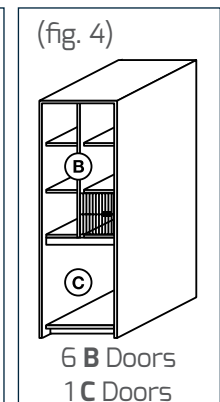
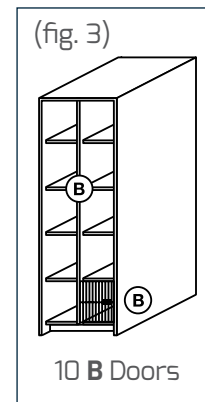
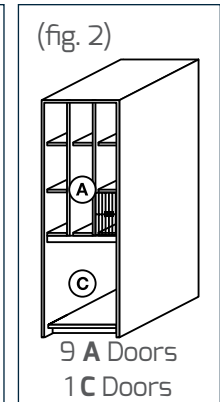
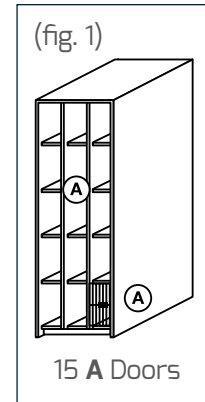
Cabinets for STANDARD WIRE DOORS (fig 1 thru 6, and fig 8)

Cabinet:	27" w x depth x 84" h, w/4" toe kick
Outside Dimensions:	(685 mm x depth x 2134 mm, w/101.6 mm toe kick)
Vertical Members:	3/4" thick (19.1 mm)
Top Horizontal Member:	3/4" thick (19.1 mm)
Shelves:	1" (25.4 mm) thick, recessed

To Calculate WIRE DOORS for NON-STANDARD CABINETS

Door Width*	Inside compartment opening minus 9/16" (14.2 mm)
Door Height	Inside compartment opening plus 23/32" (18.3 mm)

*If the inside compartment opening is greater than 36-9/16" (928.6 mm) in width, two doors will be required, or if double compartment doors are desired, calculate the door width as follows: Inside compartment opening minus 27/32" (21.4 mm) divided by 2.



CONTINUOUS HINGES

Continuous Hinge Ordering Codes:

CP2-22035-72

Hinge Type
(always "C")

Hinge Material
"C" - Stainless Steel
"S" - Steel
"P" - Pre-plated (pp)

Blank or Hole Pattern

- 1 = Blank
- 2 = 2" centers (countersunk "ctsk")
- 3 = 2" centers (no ctsk)
- 4 = 4" centers, 2" staggered (ctsk)
- 5 = 4" centers, 2" staggered (no ctsk)
- 6 = Coils
- 8 = Per print
- 9 = Unequal leaf

**Knuckle Configuration/
Gauge/Pin Diameter**

- 100 = 1/2" / .040 / .090
- 220 = 1/2" / .040 / .090 (pp Nickel)
- 330 = 1/2" / .040 / .090 (pp Brass)

Stock Length
In inches

Pin Material
"C" - Stainless Steel
"S" - Steel

Width (open & flat)
1 = 1-1/16"
2 = 1-1/4"
3 = 1-1/2"
5 = 2"

Example: CP2-22035-72 = Continuous hinge, pre-plated with 2" centers (ctsk), 1/2" joint length, .040" thickness, .090" pin diameter, 1-1/2" open width, steel pin material at 72 inches.

Hole Patterns and Finishes

RPC has in-house powder coating capabilities for institutional and continuous hinges to be able to provide quick turnaround. This permits us to offer custom colors and color matching hinges and pulls for the same cabinet.

Finishes:

- Nickel Plated
- Brass Plated
- Custom Powder Coated



Holes countersunk on 2" centers



Holes countersunk on 4" centers staggered



We have the capability to run a combination of holes and/or slots in-line on standard 2" and 4" centers.

SPECIAL CONTINUOUS HINGES

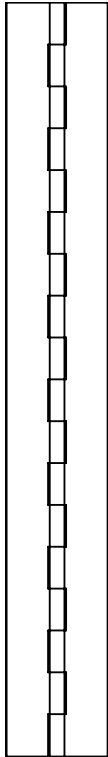
Please contact our friendly and knowledgeable sales representatives when any need arises for an unequal leaf, special hole pattern or nonstock finish. Our special hinges are the most competitively priced in the market!

If no stock length is indicated, this is a non-stocked but standard product that will be manufactured to your finish and length requirements in about 4 weeks.

Formed Hinges		19 Gauge Steel (.040" – 1.0 mm) .090" Steel Pin and 48" Lengths						
Stock No.	Open Width (in.)	Wrap Width (in.)	Effective Leaf Width (in.)	Screw Hole Size	Finishes	Wrap	Packaged with Screw	Inventory Code
CP9-4781S	2-1/4	3/4	1.415/.745	5	Brass	Single Wrap	CPP-4781S	SPEC

Distributor Packaged Sets		19 Gauge Steel (.040" – 1.0 mm) .090" Steel Pin and 48" Lengths				
(Packaged individually with screws)						
Stock No.	Packaged Set of 10/without screws	Open Width (in.)	Effective Leaf Width (in.)	Screw Hole Size	Inventory Code	
CP7-2201S-721		1-1/16	0.44	4	STK	
CP7-2202S-721	AP2-2202S-721	1-1/4	0.54	5	STK	
CP7-2203S-301		1-1/2	0.66	5	STK	
CP7-2203S-481		1-1/2	0.66	5	STK	
CP7-2203S-721	AP2-2203S-721	1-1/2	0.66	5	STK	
CP7-2203S-961		1-1/2	0.66	5	STK	
CP7-2205S-481		2	0.91	5	STK	
CP7-2205S-721	AP2-2205S-721	2	0.91	5	STK	
CP7-2205S-961		2	0.91	5	STK	
CP7-3301S-361		1-1/16	0.44	4	STK	
CP7-3301S-481		1-1/16	0.44	4	STK	
CP7-3301S-601		1-1/16	0.44	4	STK	
CP7-3301S-721		1-1/16	0.44	4	STK	
CP7-3302S-721	AP2-3302S-721	1-1/4	0.54	5	STK	
CP7-3303S-301		1-1/2	0.66	5	STK	
CP7-3303S-3C1		1-1/2	0.66	5	STK	
CP7-3303S-481		1-1/2	0.66	5	STK	
CP7-3303S-601		1-1/2	0.66	5	STK	
CP7-3303S-721	AP2-3303S-721	1-1/2	0.66	5	STK	
CP7-3305S-721	AP2-3305S-721	1-1/2	0.66	5	STK	

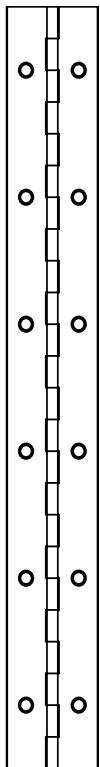
STEEL CONTINUOUS HINGES



Type CR1010 Blank Hole Pattern

19 Gauge Steel
 (.040" – 1.0 mm)
 Medium Light Gauge
 .090" Steel Pin
 1/2" Joint Length

Stock No.	Effective Open Width (in.)	Stock Leaf Width (in.)	Length (Ft.)	Inventory Code
CS1-1001S	1-1/16	0.443	-	SPEC
CS1-1002S	1-1/4	0.537	6, 8	STK
CS1-1003S	1-1/2	0.662	-	SPEC



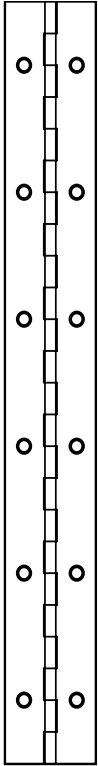
Type CR1010 Standard Hole Pattern Countersunk on 2" Centers

19 Gauge Steel
 (.040" – 1.0 mm)
 .090" Steel Pin
 1/2" Joint Length

Stock No.	Effective Open Width (in.)	Stock Leaf Width (in.)	Screw Hole Size	Length (Ft.)	Inventory Code
CS2-1001S	1-1/16	.4428	4	-	STK
CS2-1002S	1-1/4	.5365	5	-	SPEC
CS2-1003S	1-1/2	.6615	5	-	STK
CS2-1005S	2	.9105	5	-	STK

Custom finishes and powder coat colors can be provided to meet your specific needs. Please contact RPC customer service for details and lead times.

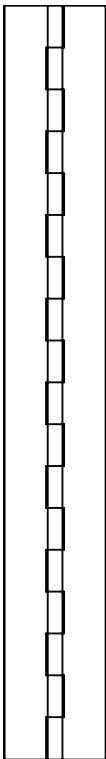
STAINLESS STEEL CONTINUOUS HINGES



Type 304 Standard Hole Pattern Countersunk on 2" Centers

19 Gauge Steel
 (.040" – 1.0 mm)
 Medium Light Gauge
 .090" Steel Pin
 1/2" Joint Length

Stock No.	Effective Open Width (in.)	Stock Leaf Width (in.)	Screw Hole Size	Length (Ft.)	Inventory Code
CC2-1001C	1-1/16	.4428	4	-	STK
CC2-1002C	1-1/4	.5365	5	-	SPEC
CC2-1003C	1-1/2	.6615	5	-	STK
CC2-1005C	2	.9105	5	-	STK



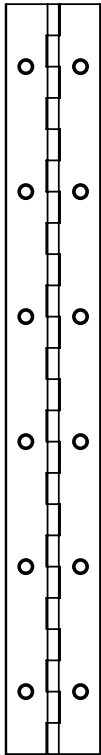
Type 304 Blank Hole Pattern

19 Gauge Steel
 (.040" – 1.0 mm)
 Medium Light Gauge
 .090" Steel Pin
 1/2" Joint Length

Stock No.	Effective Open Width (in.)	Stock Leaf Width (in.)	Length (Ft.)	Inventory Code
CC1-1001C	1-1/16	.443	-	SPEC
CC1-1003C	1-1/2	.662	-	STK
CC1-1005C	2	.912	-	STK

Custom finishes and powder coat colors can be provided to meet your specific needs. Please contact RPC customer service for details and lead times.

PRE-PLATED CONTINUOUS HINGES



Brass Plated Standard Hole Pattern Countersunk on 2" Centers

19 Gauge Steel
 (.040" – 1.0 mm)
 .090" Steel Pin
 1/2" Joint Length

Stock No.	Effective Open Width (in.)	Stock Leaf Width (in.)	Screw Hole Size	Length (Ft.)	Inventory Code
CP2-3301S	1-1/16	.4428	4	6,8	STK
CP2-3302S	1-1/4	.5365	5	6,8	STK
CP2-3303S	1-1/2	.6615	5	6,8	STK
CP2-3305S	2	.9105	5	6,8	STK

Nickel Plated Standard Hole Pattern Countersunk on 2" Centers

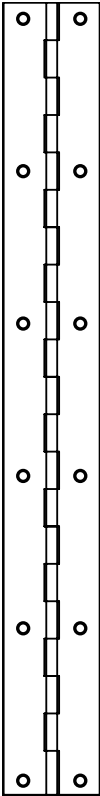
19 Gauge Steel
 (.040" – 1.0 mm)
 .090" Steel Pin
 1/2" Joint Length

Stock No.	Effective Open Width (in.)	Stock Leaf Width (in.)	Screw Hole Size	Length (Ft.)	Inventory Code
CP2-2201S	1-1/16	.4428	4	6	STK
CP2-2202S	1-1/4	.5365	5	6	STK
CP2-2203S	1-1/2	.6615	5	6	STK
CP2-2205S	2	.9105	5	-	STK

Custom finishes and powder coat colors can be provided to meet your specific needs. Please contact RPC customer service for details and lead times.

PRE-PLATED CONTINUOUS HINGES

PRE-PLATED CONTINUOUS HINGES IN 100' COILS

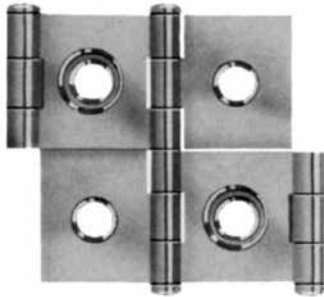


100' Coils		Countersunk on 2" Centers					
19 Gauge Steel .090" Steel Pin 1/2" Joint Length		Effective	Stock	Screw		Inventory	
		Open	Leaf	Hole			
Stock No.	Width	Width	Material	Size	Finish	Code	
	(in.)	(in.)	Thickness				
CP6-2202S	1-1/4	0.54	01.0 mm	5	Nickel	STK	
CP6-2203S	1-1/2	0.66	01.0 mm	5	Nickel	STK	
CP6-3302S	1-1/4	0.54	01.0 mm	5	Brass	STK	
CP6-3303S	1-1/2	0.66	01.0 mm	5	Brass	STK	

Custom finishes and powder coat colors can be provided to meet your specific needs. Please contact RPC customer service for details and lead times.

DOUBLE ACTING SCREEN HINGES

Part Number H03-04001-03



Elbow Catches

Height: 1-3/4" (44.5 mm)
Width: for 3/4" panels or doors
Gauge: .040" (1.1 mm)
Screw Size: #6
Pack: 400/case
Available in bright brass only.

Part Number H01-04004-03



Gravity Pivot Hinge Set with Screws For Café or Bar Doors

Height: 1-1/4" (44.5 mm)
Width: 1" (25.4 mm) for 3/4" to 1-3/4" panels
Screw Size: #8 x 3/4"
Pack: 100/case
Available in bright brass only.

Part Number M03-99389-17



Elbow Catch Set with Catch & Plate

Length: 2-1/4" (57.2 mm)
Width: 1-1/8" (28.6 mm)
Height: 1" (25.4 mm)
Pack: 100 sets/case

Available in zinc only.

Part Number M03-00039-26



Elbow Catch Set with Catch, Plate & Screws

Length: 1-1/4" (31.8 mm)
Width: 1" (25.4 mm)
Height: 1-1/8" (28.6 mm)
Pack: Poly bagged set, 100 sets/case

Available in bright chrome only.

Part Number M08-99391-17



Jumbo Roller Catch Set with Catch & Plate

Length: 1-9/16" (39.7 mm)
Width: 1-7/8" (47.6 mm)
Height: 15/16" (23.8 mm)
Pack: 50 sets/case

Available in white zinc only.

Part Number B03-07000



Button Catch Inside Clip

Length: 5/8" (15.9 mm)
Width: 1-1/8" (28.6 mm)
Height: 1" (25.4 mm)
Pack: 500 case

Available in white zinc.

CASEWORK HARDWARE

Part Number B03-07001



Button Catch Reverse Clip

Length: 1" (25.4 mm)
Width: 5/8" (15.9 mm)
Height: 3/4" (19 mm)
Pack: 500 case

Available in bright brass and white zinc.

Part Number B03-07002-17



Button For Catch

Length: 7/8" (22.2 mm) with screw
Width: 1/2" (12.7 mm) diameter
Height: 5/16" (7.9 mm)
Pack: 500/case

Available in white zinc.

Part Number B03-07003-17



Receiver Catch

Length: 3/8" (9.5 mm)
Width: 5/8" (15.9 mm)
Height: 1/2" (12.7 mm)
Pack: 7,500/case

Available in white zinc only.

Part Number M03-00033-03



Insert Bullet Catch Set with Nail

Diameter: 1/4" (4.4 mm) — **M03-00033**
Pack: 500 sets/case

Available in bright brass only.

Part Number M03-4400B-03



Double Ball Catch – Solid Brass

Length: 1-45/64" (43.3 mm)
Width: 5/16" (7.9 mm)
Height: 3/8" (9.5 mm)
Pack: 100 sets/case

Available in solid brass only.

Part Number B02-06512-A6



Double Wardrobe Hook with Screws

Length: 2-1/4" (57.2 mm)
Hook Width: 2-7/8" (73 mm)
Base Width: 1-1/2" (38.1 mm)
Pack: 50/carton; 500/case

Available in polished aluminum only.

Part Number B02-06513-A6



Double Ceiling Hook with Screw

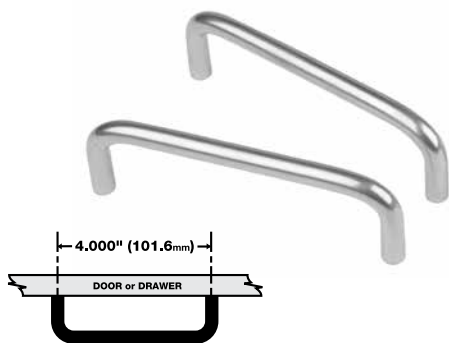
Length: 2-1/4" (57.2 mm)
Hook Width: 3-1/4" (82.6 mm)
Base Width: 1-7/8" (47.6 mm)
Pack: 30/carton; 300/case

Available in polished aluminum only.

PULLS

Pulls are available with 4" or 96 mm mounting hole centers. They are brushed stainless steel or carbon steel with a powder coat finish or dull chrome plating. Pulls use two #8-32 machine screws which are not provided.

Part Number P604, P604SS



Material Diameter: 5/16" (8 mm)
On Center Hole Spacing: 4" (101.6 mm)
Protrusion: 1-1/4" (31.8 mm)
Pack: 100/case, cell packed



Available chrome plated or powder coat.

P604SS

Type 304 stainless steel

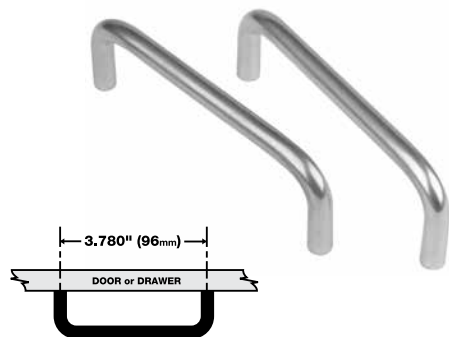
Pack: 100/case, poly bagged

P4604ERSS

4" OC mounting holes with longer offset.

Handle protrudes 1.44" for greater clearance for ADA applications.

Part Number P605, P605SS



Material Diameter: 5/16" (8 mm)
On Center Hole Spacing: 3-25/32" (96 mm)
Protrusion: 1-1/4" (31.8 mm)
Pack: 100/case, cell packed



Available chrome plated or powder coat.

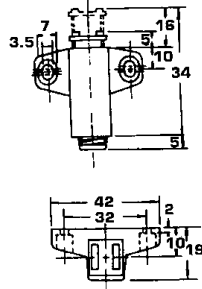
P605SS

Type 304 stainless steel

Pack: 100/case, cell packed

MAGNETIC TOUCH LATCHES

Part Number B01-06969-55

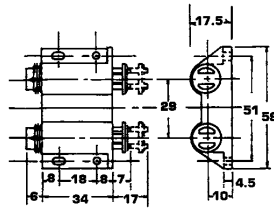


Single Magnetic Touch Latch with 32 mm Hole Centers

Length: 1-3/4" (44.5 mm)
Width: 1-21/32" (42 mm)
Height: 3/4" (19 mm)
Screw Size: #4
Pack: 100/case

Available in black only.

Part Number B01-V6931



Double Magnetic Touch Latch

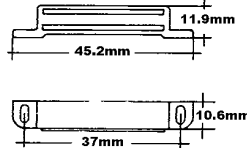
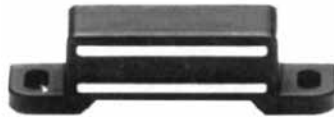
Length: 1-13/16" (46 mm)
Width: 2-1/4" (57.2 mm)
Height: 11/16" (17.5 mm)
Screw Size: #4
Pack: 125/case

Available in brown only.



MAGNETIC CATCHES

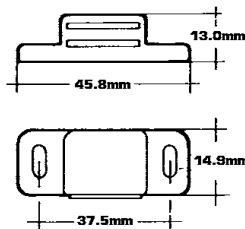
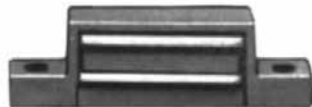
Part Number M03-03934



Holding Power: 12 lbs
 Length: 1-3/4" (45.2 mm)
 Width: 13/32" (10.6 mm)
 Height: 15/32" (11.9 mm)
 Screw Size: #4
 Pack: 300/case

Available in white only.

Part Number M03-X3921



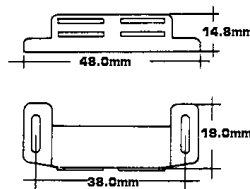
Holding Power: 8.5 lbs
 Length: 1-13/16" (45.8 mm)
 Width: 19/32" (14.9 mm)
 Height: 1/2" (13 mm)
 Screw Size: #4
 Pack: 250/case

Available in white and brown.

M02-X3921: Poly bagged set with strike plate & screws

Available in white and brown.

Part Number M03-03926



Holding Power: 9 lbs
 Length: 1-7/8" (48 mm)
 Width: 3/4" (19 mm)
 Height: 9/16" (14.8 mm)
 Screw Size: #4
 Pack: 500/case

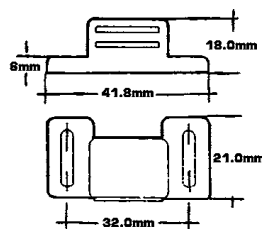
Available in brown.

M02-03926-66: Poly bagged set with strike plate & screws

Pack: 400/carton – 800/case

Available in white only.

Part Number M03-03932

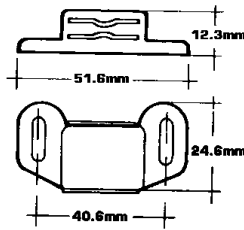
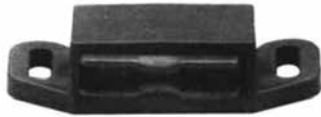


Holding Power: 8 lbs
 Length: 1-21/32" (41.8 mm)
 Width: 27/32" (21 mm)
 Height: 23/32" (18 mm)
 Screw Size: #4
 Pack: 250/case

Available in brown only.

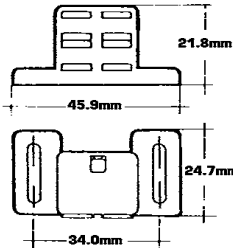
MAGNETIC CATCHES

Part Number M03-03923-77



Holding Power: 8 lbs
 Length: 2-5/16" (51.6 mm)
 Width: 31/32" (24.6 mm)
 Height: 1/2" (12.3 mm)
 Screw Size: #4
 Pack: 250/case
Available in brown only.

Part Number M03-03950



Holding Power: 25 lbs
 Length: 1-13/16" (45.9 mm)
 Width: 63/64" (24.7 mm)
 Height: 7/8" (21.8 mm)
 Screw Size: #6
 Pack: 50/carton – 500/case
Available in white only.



M02-03950: Poly bagged set with strike plate & screws
 Pack: 200/case

Part Number M04-02901

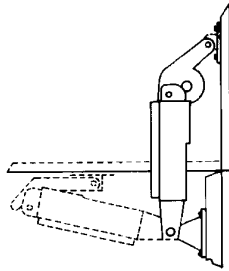


Rectangular Strike Plate

Length: 1-7/32" (31 mm)
 Width: 29/32" (23 mm)
 Screw Size: #5
 Pack: 2,000/case

LID SUPPORTS

Part Number LS6-R1575-06, LS6-L1575-06

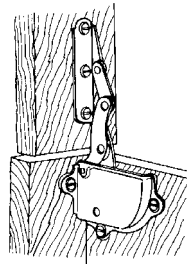


Self-Balancing Heavy-Duty Lid Support, Back Mounted

Hand: **R1575** – right, **L1575** - left
 Tension: 35 lbs
 Open Length: 6" (152.4 mm)
 Arm Width: 15/16" (23.8 mm)
 Screw Size: #6
 Pack: 100/carton – 200/case

Available in statuary bronze only.

Part Number H02-CH000-03 (pair)



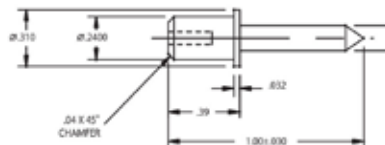
Combination Hinge and Support

Hand: Left and right
 Tension: None
 Open Length: 3-3/4" (95.3 mm)
 Arm Width: 1" (25.4 mm)
 Length Of Slot: 5-1/2" (139.7 mm)
 Screw Size: #6
 Pack: 50/case

Available in bright brass only.

SHUTTER PINS

Part Number PN9-00500-01



Standard Shutter Pin

Pin Diameter: .140" (3.6 mm)
 Head Diameter: .240" (6.1 mm)
 Full Length: 1.035" (26.3 mm)
 Pack: 15,000/case

Nylon

Part Number B01-34056



Spoon-Type Shelf Support

Bore: 3/16" (5 mm)
Length: 3/4" (19 mm)
Width: 5/16" (7.9 mm)
Pack: 1,000/case

Available in antique brass, bright brass or nickel.

Part Number B01-34050



Spoon-Type Shelf Support

Bore: 1/4" (6.5 mm)
Length: 3/4" (19 mm)
Width: 1/2" (7.9 mm)
Pack: 1,000/case

Available in antique brass, black nickel, bright brass or nickel.

Part Number B08-34051-14



Right Angle Shelf Rest with Quake Pin Hole

Bore: 1/4" (6.5 mm)
Length: 23/32" (18.2 mm)
Width: 33/64" (13.2 mm)
Pack: 1,000/case

Available in nickel only.

Part Number B03-3406X-14



Right Angle Shelf Rest With Quake Pin Hole

Bore: 3/16" (5 mm)
Length: 23/32" (18.2 mm)
Width: 33/64" (13.2 mm)
Pack: 1,000/case

Available in nickel only.

STANDARDS & BRACKETS

Single Standards and Brackets

Refer to Chart

Strong brackets designed with high loads in mind.

Equipped with a unique locking mechanism for added security and immobilization.

Reinforced and slotted for ease of installation.

Applications: Industrial, warehouse, garage, general storage in various business environments.



SINGLE STANDARDS

Width:	7/8" (22.2 mm)
Depth:	3/16" (4.8 mm)
Length:	B01-59241-174 24"
	B01-59301-174 30"
	B01-59361-174 36"
	B01-59481-174 48"
	B01-59601-174 60"
	B01-59721-174 72"
	B01-59841-174 84"
	B01-59961-174 96"

Adjustments: Every 2" (50.8 mm)
 Finish: Bright zinc
 Pack: 10/case

SINGLE BRACKETS

Length:	B01-53081-224 8"
	B01-53101-224 10"
	B01-53121-224 12"
	B01-53141-224 14"
	B01-53161-224 16"
	B01-53181-224 18"
	B01-53201-224 20"
	B01-53221-224 22"
	B01-53241-224 24"

Finish: Brushed zinc
 Pack: 20/case



Single Standards and Brackets

Refer to Chart

Double strong industrial brackets that secure weight loads for commercial/industrial applications. Various sizes available allowing endless configuration possibilities.

Double slots and lip for secure/level shelving strength.

Applications: Utilitarian, commercial and industrial adjustable storage areas.



DOUBLE STANDARDS

Width:	7/8" (22.2 mm)
Depth:	3/16" (4.8 mm)
Length:	B01-60241-174 24"
	B01-60361-174 36"
	B01-60481-174 48"
	B01-60601-174 60"
	B01-60721-174 72"
	B01-60841-174 84"
	B01-60961-174 96"

Adjustments: Every 1" (25.4 mm),
 double slots
 Finish: Bright zinc
 Pack: 10/case

DOUBLE BRACKETS

Length:	B01-54081-224 8"
	B01-54101-224 10"
	B01-54121-224 12"
	B01-54141-224 14"
	B01-54161-224 16"
	B01-54181-224 18"
	B01-54201-224 20"
	B01-54221-224 22"
	B01-54241-224 24"

Finish: Brushed zinc
 Pack: 20/case



STANDARDS & BRACKETS

Premier Double Standards and Brackets

Refer to Chart

Smooth and attractive, the premier brackets are for a designer look that carries a substantial load.

Reinforced and slotted for ease of installation.

Applications: Pantries, retail, display, office, schools, businesses and institutions.



PREMIER DOUBLE STANDARDS

Width:	7/8" (22.2 mm)
Depth:	11/16" (17.5 mm)
Length:	B01-61161-WH4 16.5"
	B01-61281-WH4 28"
	B01-61391-WH4 39"
	B01-61481-WH4 48"
	B01-61631-WH4 63"
	B01-61781-WH4 78"
	B01-61941-WH4 94"

Adjustments: Every 1" (25.4 mm), double slots

Finish: White
Pack: 10/case

PREMIER DOUBLE BRACKETS

Length:	B01-56051-WH4 5"
	B01-56071-WH4 7"
	B01-56091-WH4 9"
	B01-56101-WH4 10.5"
	B01-56121-WH4 12.5"
	B01-56141-WH4 14.5"
	B01-56181-WH4 18.5"
	B01-56241-WH4 24.5"

Finish: White
Pack: 10/case



Regular Standards and Brackets - Zinc

Refer to Chart

Lighter duty standard with vertical slots and double locking brackets with an attractive brushed zinc finish.

ANSI approved.

Lipped brackets.

Applications: Ideal for home or office.



REGULAR STANDARDS

Width:	1/2" (22.2 mm)
Depth:	3/16" (4.8 mm)
Length:	B01-64121-174 12"
	B01-64241-174 24"
	B01-64361-174 36"
	B01-64481-174 48"
	B01-64601-174 60"
	B01-64721-174 72"
	B01-64961-174 96"

Adjustments: Every 1/2" (12.7 mm)

Finish: Bright zinc
Pack: 10/case

REGULAR BRACKETS

Length:	B01-65041-224 4"
	B01-65061-224 6"
	B01-65081-224 8"
	B01-65101-224 10"
	B01-65121-224 12"
	B01-65141-224 14"
	B01-65161-224 16"
	B01-65181-224 18"
	B01-65201-224 20"
	B01-65221-224 22"
	B01-65241-224 24"

Finish: Brushed zinc
Pack: 10/case

BRACKETS, STANDARDS, PILASTERS & CLIPS

Regular Standards and Brackets - White

Refer to Chart

Lighter duty standard with vertical slots and double locking brackets in a bright white finish.

ANSI approved.

Lipped brackets.

Applications: Ideal for home or office.



REGULAR STANDARDS

Width:	1/2" (22.2 mm)
Depth:	3/16" (4.8 mm)
Length:	B01-64121-WH4 12"
	B01-64241-WH4 24"
	B01-64361-WH4 36"
	B01-64481-WH4 48"
	B01-64601-WH4 60"
	B01-64721-WH4 72"
	B01-64961-WH4 96"

Adjustments: Every 1/2" (12.7 mm)

Finish: White

Pack: 10/case

REGULAR BRACKETS

Length:	B01-65041-WH4 4"
	B01-65061-WH4 6"
	B01-65081-WH4 8"
	B01-65101-WH4 10"
	B01-65121-WH4 12"
	B01-65141-WH4 14"
	B01-65161-WH4 16"
	B01-65181-WH4 18"
	B01-65201-WH4 20"
	B01-65221-WH4 22"
	B01-65241-WH4 24"

Finish: White

Pack: 10/case

Pilasters & Clips

Refer to Chart

The pilasters and clips are designed to discreetly hold various shelf materials, like glass, particle board, wood, etc.

Pre-drilled nail holes and stamped numbers for easy installation.

Applications: Bookcases, closets, entertainment centers and cabinets.



PILASTER STANDARDS

Width:	7/8" (22.2 mm)
Depth:	3/16" (4.8 mm)
Length:	B01-58181-174 18"
	B01-58241-174 24"
	B01-58301-174 30"
	B01-58361-174 36"
	B01-58481-174 48"
	B01-58601-174 60"
	B01-58721-174 72"
	B01-58841-174 84"
	B01-58961-174 96"

Adjustments: every 1/2" (12.7 mm)

Finish: Bright zinc

Pack: 18"-48" 100/case

60"-96" 50/case

PILASTER CLIPS

Pack:	B01-CLP21-17 100/box
Pack:	B01-CLP22-17 1,000/case
Finish:	Bright zinc

WORK STATION BRACKETS

Steel Work Station Brackets



- >> 1/8" steel
- >> Load capacity exceeds 1,000 lbs. per pair
- >> Available in four colors: Black, White, Almond, Gray
- >> Primer finish available
- >> Eight sizes
- >> Multiple mounting hole locations (1/4")
- >> Larger sizes feature cutouts for wiring
- >> Sold and packaged in multiple pairs equal number of rights and lefts

Stock Number	Size	Pairs/Wgt/Box
B08-05081	5" x 8"	5 prs/10 lbs
B08-08121	8" x 12"	5 prs/21 lbs
B08-12181	12" x 18"	3 prs/18 lbs
B08-15211	15" x 21"	3 prs/27 lbs
B08-18181	18" x 18"	3 prs/26 lbs
B08-18241	18" x 24"	3 prs/31 lbs
B08-24241	24" x 24"	3 prs/48 lbs
B08-24291	24" x 29"	2 prs/38 lbs

Stainless Steel Work Station Brackets



- >> Genuine 304 series stainless steel
- >> Natural brushed finish
- >> Nonmagnetic
- >> Twelve gauge
- >> Three sizes
- >> Multiple mounting holes
- >> Cutouts for wiring
- >> Packed in pairs, one right, one left

Stock Number	Size	Pairs/Wgt/Box
B08-08121-SS4	8" x 12"	2 pcs/3.8 lbs
B08-15211-SS4	15" x 21"	2 pcs/8.5 lbs
B08-18241-SS4	18" x 24"	2 pcs/9.8 lbs

WORK STATION BRACKETS

Steel Concealed Brackets

Includes Fasteners – 3/8" - 16" x 4" Bolts



- >> 1/8" and 1/4" steel
- >> Available in four colors: Black, White, Almond, Gray
- >> Four sizes
- >> Includes mounting hardware – 3/8" x 4" carriage bolts, hex nuts and flat washers
- >> Mounts directly to wall studs
- >> 2 pieces/box

Stock Number	Size	Pairs/Wgt/Box
B08-OCH09	9" x 12"	2 pcs/11 lbs
B08-OCH12	12" x 12"	2 pcs/12 lbs
B08-OCH18	18" x 18"	2 pcs/18 lbs
B08-OCH24	24" x 18"	2 pcs/22 lbs

Extended Steel Concealed Brackets

Includes Fasteners – 3/8" - 16" x 4" Bolts



Stock Number	Size	Pairs/Wgt/Box
B08-ECH09	9" x 20"	2 pcs/14 lbs
B08-ECH12	12" x 20"	2 pcs/16 lbs
B08-ECH18	18" x 26"	2 pcs/22 lbs
B08-ECH24	24" x 26"	2 pcs/24 lbs

COUNTER & SUPPORT BRACKETS

Aluminum Counter & Support Brackets



Model No.	Surface Depth	Size	T-Extension	Weight Capacity
AL-1212-000	Up to 18" (457 mm)	12" x 12" (305 x 305 mm)	2" x 2" x 1/4" (51 x 51 x 6.4 mm)	450 lb. (204 kg)
AL-1818-000	Up to 25" (635 mm)	18" x 18" (457 x 457 mm)	2" x 2" x 1/4" (51 x 51 x 6.4 mm)	450 lb. (204 kg)
AL-1824-000	Up to 30" (762 mm)	18" x 24" (457 x 610 mm)	2" x 1/4" and 3" x 3/16" (51 x 6.4 and 76 x 4.8 mm)	450 lb. (204 kg)

Powder coat finishes also available.

Aluminum Vanity Brackets AL-1821-000



- >> 3/4" pine strip for easy mounting of surface paneling
- >> Sturdy 450# weight capacity per bracket
- >> Available in 18" x 21-1/2" x 2"
- >> Can be installed to meet ADA compliance

Ultra Heavy Duty Tri-Angle Brackets



Part No.	Color	Size	Box Qty.	Unit Size	Order Qty.
B01-TB012-WH4	White	300 mm	10	EA	Full Box
B01-TB016-WH4	White	400 mm	10	EA	Full Box
B01-TB020-WH4	White	500 mm	10	EA	Full Box
B01-TB022-WH4	White	550 mm	10	EA	Full Box
B01-TB012-BL4	Black	300 mm	10	EA	Full Box
B01-TB016-BL4	Black	400 mm	10	EA	Full Box
B01-TB020-BL4	Black	500 mm	10	EA	Full Box
B01-TB022-BL4	Black	550 mm	10	EA	Full Box

Granite Counter Support Brackets



Part No.	Part Description	Dimension	Net Weight	Box Qty.
B08-CT012-2K4	12" 3/16"T	3/16"T x 3-1/2"W x 12"L	1.006 kg	12
B08-CT016-2K4	16" 3/16"T	3/16"T x 3-1/2"W x 16"L	1.342 kg	12
B08-CT024-2K4	24" 3/16"T	3/16"T x 3-1/2"W x 24"L	2.013 kg	8
B08-CT030-2K4	30" 3/4"T	3/4"T x 3/4"W x 30"L	2.157 kg	8
B08-CTH12-2K4	HD 12" 1/4"T	1/4"T x 3-1/2"W x 12"L	1.342 kg	12
B08-CTH16-2K4	HD 16" 3/8"T	3/8"T x 3-1/2"W x 16"L	2.684 kg	6
B08-CTH24-2K4	HD 24" 3/8"T	3/8"T x 3-1/2"W x 24"L	4.026 kg	6
B08-CTH30-2K4	HD 30" 3/8"T	3/8"T x 3-1/2"W x 30"L	5.032 kg	4

RPC TERMS AND CONDITIONS

Payment Terms: Net 30 days on approved credit.

Freight: FOB, Rockford, Illinois.

RPC Part Numbering: Please provide the complete part number and quantity when entering your order.

Minimum Order Quantity: Institutional hinges are sold in case quantities only. For special butt hinge, continuous hinge, shutter hinge or general casework hardware minimums, contact RPC customer service.

Minimum Order Amount: \$250.00 or an additional handling fee of \$25.00 will be assessed per order. Minimum order quantities for parts noted as "Special" will remain in effect. Contact RPC customer service for specific details.

Part numbers may be combined to reach the \$250.00 minimum order amount.

Order Acceptance: Order acceptance is subject to credit approval.

Return Policy: Buyer's request for return of catalog product must be submitted in writing to Rockford Process Control. A return material authorization (RMA) number will be issued to the buyer as authorization from RPC to return the product. The RMA number must be referenced on all buyer's shipping and debit memo documents prior to buyer's shipment of product to RPC.

For return of saleable catalog product, a minimum restocking charge of 25% of the value of the returned product will apply. Return freight is to be prepaid by the buyer.

Product that is being returned due to defects in material or workmanship is to be shipped to RPC via best-way surface, freight collect.

Order Cancellations: Order cancellations must be submitted in writing and will be accepted only when reasonable and approved by Rockford Process Control. No cancellations will be accepted prior to 30 days of original ship date.

Pricing: Prices are subject to change without notice.

RPC TERMS AND CONDITIONS

MEASUREMENT CROSS REFERENCE

Fraction	Inch	Millimeter	Fraction	Inch	Millimeter	Millimeter to Inch Equivalents			
1/64	.0156	.3968	33/64	.5156	13.097	1.5	1/16	14	9/16
1/32	.0312	.7937	17/32	.5312	13.494	2	3/32	15	19/32
3/64	.0468	1.191	35/64	.5468	13.891	3	1/8	16	5/8
1/16	.0625	1.588	9/16	.5625	14.288	4	5/32	17	21/32
5/64	.0781	1.984	37/64	.5781	14.684	5	3/16	17.5	11/16
3/32	.0937	2.381	19/32	.5937	15.081	5.5	7/32	18	23/32
7/64	.1093	2.778	39/64	.6093	15.478	6	1/4	19	3/4
1/8	.125	3.175	5/8	.625	15.875	7	9/32	20	25/32
9/64	.1406	3.572	41/64	.6406	16.272	8	5/16	20.5	13/16
5/32	.1562	3.969	21/32	.6562	16.669	9	11/32	21	27/32
11/64	.1718	4.366	43/64	.6718	17.066	9.5	3/8	22	7/8
3/16	.1875	4.763	11/16	.6875	17.463	10	13/32	23	29/32
13/64	.2031	5.159	45/64	.7031	17.859	11	7/16	24	15/16
7/32	.2187	5.556	23/32	.7187	18.256	12	15/32	24.5	31/32
15/64	.2343	5.953	47/64	.7343	18.653	13	1/2	25.4	1
1/4	.25	6.350	3/4	.75	19.050	Millimeter to Inch Equivalents			
17/64	.2656	6.747	49/64	.7656	19.447	250	9-7/8	500	19-11/16
9/32	.2812	7.144	25/32	.7812	19.844	270	10-5/8	510	20-1/16
19/64	.2968	7.541	51/64	.7968	20.241	300	11-13/16	512	20-1/8
5/16	.3125	7.938	13/16	.8125	20.638	350	13-3/4	550	21-5/8
21/64	.3281	8.334	53/64	.8281	21.034	400	15-3/4	570	22-7/16
11/32	.3437	8.731	27/32	.8437	21.431	418	16-7/16	582	22-15/16
23/64	.3593	9.128	55/64	.8593	21.828	430	16-15/16	600	23-5/8
3/8	.375	9.525	7/8	.875	22.225	440	17-5/16	650	25
25/64	.3906	9.921	57/64	.8906	22.622	450	17-3/4	700	27-9/16
13/32	.4062	10.319	29/32	.9062	23.019	470	18-1/2	750	29-9/16
27/64	.4218	10.715	59/64	.9218	23.416				
7/16	.4375	11.113	15/16	.9375	23.813				
29/64	.4531	11.509	61/64	.9531	24.209				
15/32	.4687	11.906	31/32	.9687	24.606				
31/64	.4844	12.303	63/64	.9843	25.003				
1/2	.5	12.700	1	1	25.400				

1 mm = .03937 inches
 1 inch = 25.4 mm
 1 meter = 3.2809 feet
 1 kg = 2.2 lbs.

INDEX

Part Number	Page	Part Number	Page	Part Number	Page
74	12	AP2-33025	19	B01-59301-174	34
76	12	AP2-33035	19	B01-59361-174	34
349	10	AP2-33055	19	B01-59481-174	34
362	10	B01-06969-55	29	B01-59601-174	34
36255	10	B01-34050	33	B01-59721-174	34
374	6	B01-34056	33	B01-59841-174	34
375	6	B01-53081-224	34	B01-59961-174	34
376	6	B01-53101-224	34	B01-60241-174	34
37655	6	B01-53121-224	34	B01-60361-174	34
388	9	B01-53141-224	34	B01-60481-174	34
454	7	B01-53161-224	34	B01-60601-174	34
456	7	B01-53181-224	34	B01-60721-174	34
844	9	B01-53201-224	34	B01-60841-174	34
848	7	B01-53221-224	34	B01-60961-174	34
849	7	B01-53241-224	34	B01-61161-WH4	35
853	8	B01-54081-224	34	B01-61281-WH4	35
860	11	B01-54101-224	34	B01-61391-WH4	35
2101	13	B01-54121-224	34	B01-61481-WH4	35
2102	13	B01-54141-224	34	B01-61631-WH4	35
2103	13	B01-54161-224	34	B01-61781-WH4	35
2104	13	B01-54181-224	34	B01-61941-WH4	35
2105	13	B01-54201-224	34	B01-64121-174	35
2106	14	B01-54221-224	34	B01-64121-WH4	36
2107	11	B01-54241-224	34	B01-64241-174	35
2801-26B	14	B01-56051-WH4	35	B01-64241-WH4	36
2802-26B	14	B01-56071-WH4	35	B01-64361-174	35
2804-26B	15	B01-56091-WH4	35	B01-64361-WH4	36
2813-26B	15	B01-56101-WH4	35	B01-64481-174	35
2814-26B	15	B01-56121-WH4	35	B01-64481-WH4	36
7036	9	B01-56141-WH4	35	B01-64601-174	35
8314	8	B01-56181-WH4	35	B01-64601-WH4	36
831455	8	B01-56241-WH4	35	B01-64721-174	35
8362	8	B01-58181-174	36	B01-64721-WH4	36
836255	8	B01-58241-174	36	B01-64961-174	35
8581	11	B01-58301-174	36	B01-64961-WH4	36
AL-1212-000	39	B01-58361-174	36	B01-65041-224	35
AL-1818-000	39	B01-58481-174	36	B01-65041-WH4	36
AL-1824-000	39	B01-58601-174	36	B01-65061-224	35
AL-1821-000	39	B01-58721-174	36	B01-65061-WH4	36
AP2-22025	19	B01-58841-174	36	B01-65081-224	35
AP2-22035	19	B01-58961-174	36	B01-65081-WH4	36
AP2-22055	19	B01-59241-174	34	B01-65101-224	35



ROCKFORD PROCESS CONTROL, INC.
4301 Kishwaukee St. | Rockford, IL 61109
815.966.2001

hardware@modernforge.com | rockfordprocesshingesandhardware.com